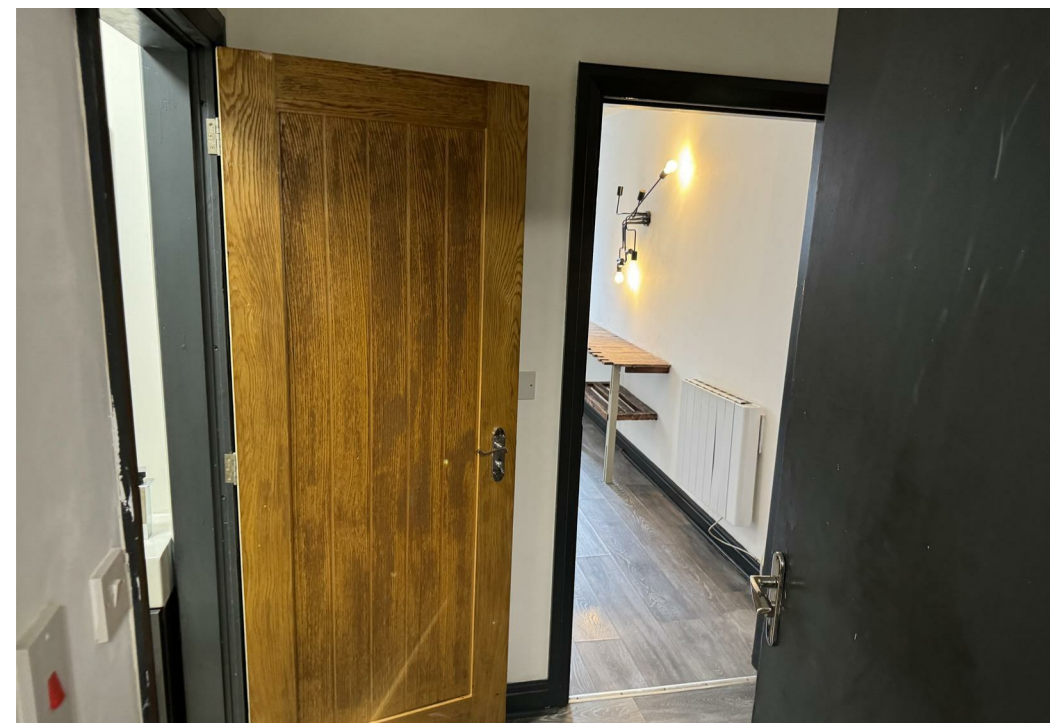
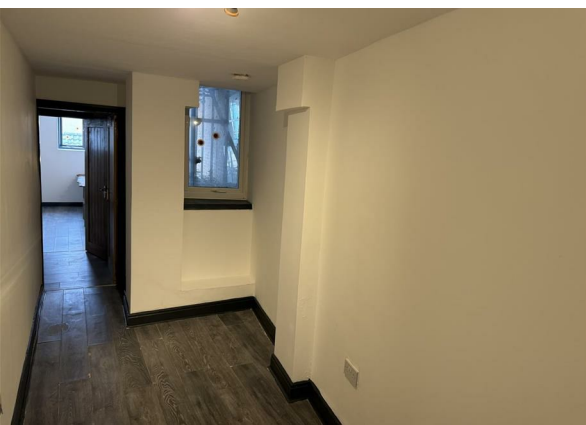


Town Hill, Warrington, WA1 1AL

£800 Per Month

Council Tax Band: B



Welcome to this charming one-bedroom flat located at bank chambers in the heart of Warrington.

This property boasts a cosy living area, perfect for relaxing or entertaining guests; with an open plan kitchen and living area that features large windows, ensuring plenty of natural light.

With a town centre location, you'll have easy access to local amenities, shops, and restaurants. Additionally, the proximity to the train station makes commuting to Manchester and Liverpool a breeze.

This flat is well-suited for individuals or couples looking for a convenient and low-maintenance living space. Don't miss out on the opportunity to rent this lovely property in a prime location.

Contact us today to arrange a viewing!



The Hive Sankey Street, Warrington, WA1

1XG

01925 987 085

info@real5estates.com

www.real5estates.com



Energy Efficiency Rating		
	Current	Potential
<i>Very energy efficient - lower running costs</i>		
(92 plus) <b>A</b>		
(81-91) <b>B</b>		
(69-80) <b>C</b>		
(55-68) <b>D</b>	59	
(39-54) <b>E</b>		
(21-38) <b>F</b>		
(1-20) <b>G</b>		
<i>Not energy efficient - higher running costs</i>		
<b>England &amp; Wales</b>	EU Directive 2002/91/EC	