

# clever



## 15 Ashford Road

, Plymouth, PL4 7BL

**£142 Per week**

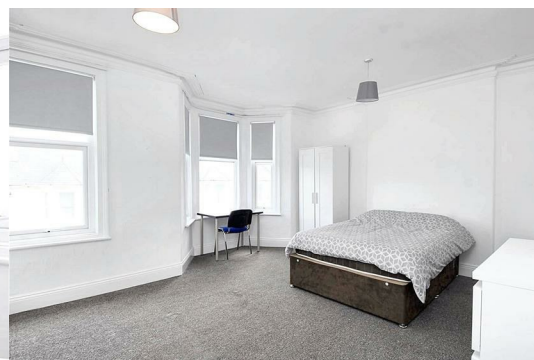
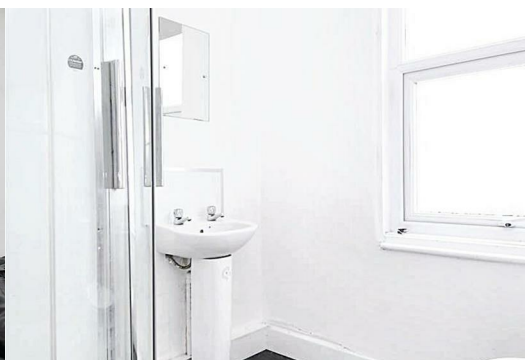


Nestled on Ashford Road in the vibrant city of Plymouth, this charming four-bedroom house presents an excellent opportunity for students seeking comfortable and convenient living. The property boasts a spacious reception room, perfect for relaxation or social gatherings, and four well-proportioned bedrooms that provide ample space for study and rest.

The location is particularly advantageous, as it is situated close to a variety of shops, ensuring that daily necessities are just a short stroll away. Additionally, the property benefits from good bus routes, making it easy for residents to access the wider city and its amenities, including universities and local attractions.

This house is ideal for those looking for a student property that combines comfort with practicality. With its inviting atmosphere and prime location, it promises a delightful living experience in one of Plymouth's lively neighbourhoods. Whether you are looking to settle in with friends or seeking a peaceful study environment, this property is well worth considering.

Gas, electric water and WIFI included! (fair usage policy applies)  
Council tax band B



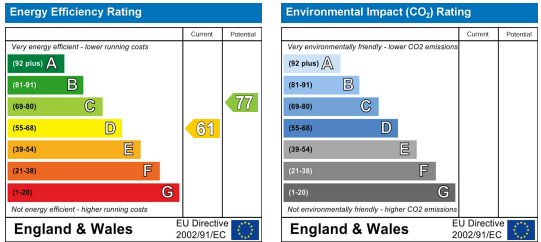
### Area Map



### Floor Plans



### Energy Efficiency Graph



These particulars, whilst believed to be accurate are set out as a general outline only for guidance and do not constitute any part of an offer or contract. Intending purchasers should not rely on them as statements of representation of fact, but must satisfy themselves by inspection or otherwise as to their accuracy. No person in this firm's employment has the authority to make or give any representation or warranty in respect of the property.