

estate agents **auctioneers**

**hollis
morgan**



46B Mount Pleasant Terrace, Southville, Bristol, BS3 1LF

£229,950

Hollis Morgan - A well presented garden flat with private entrance, located yards from the ever popular North Street.

- Private Courtyard
- Modern Finish Throughout
- Separate Kitchen
- Well Presented
- Fantastic Location
- Close to North Street
- Chain Free

The Property

This light and airy garden flat located within a short walk of Southville's vibrant and popular North St, home to a vast array of local and independent retailers, cafes and restaurants.

Access to the property is gained via a private entrance which beckons you via a hallway into a bright living space, a stylish fully fitted shower room has been cleverly incorporated into the accommodation complete with electric shower, low level W.C and wash basin. A well proportioned double bedroom with ample storage overlooks the courtyard. Completing the footprint, a sleek fully fitted kitchen with integrated fridge/freezer, dishwasher, electric hob, oven and washer/dryer. In addition there is direct access to an enclosed courtyard, perfect for entertaining.

Ample on- street residents parking is available via Bristol City Council with a permit.

Location

Mount Pleasant is located within the popular suburb of Southville. North Street is moments away and offers a wide variety of amenities including bars, pubs, cafes and independent retailers. Bristol City Centre and the Harbourside district is within a mile whilst there are also regular public transport links running from Bedminster to the Cabot Circus shopping complex which is approximately two miles away.

Other Information

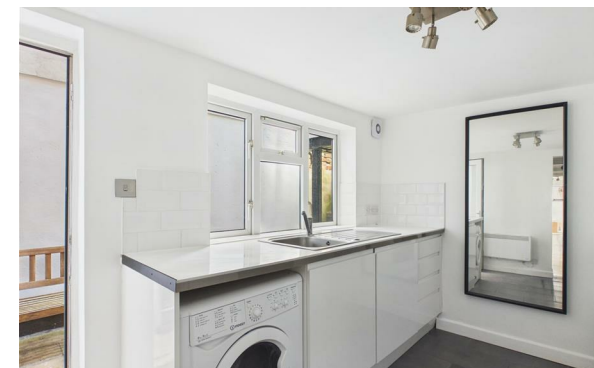
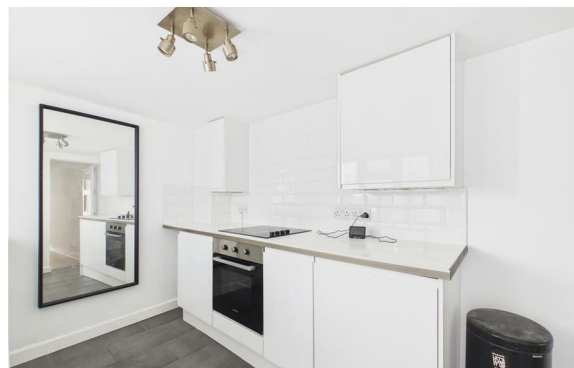
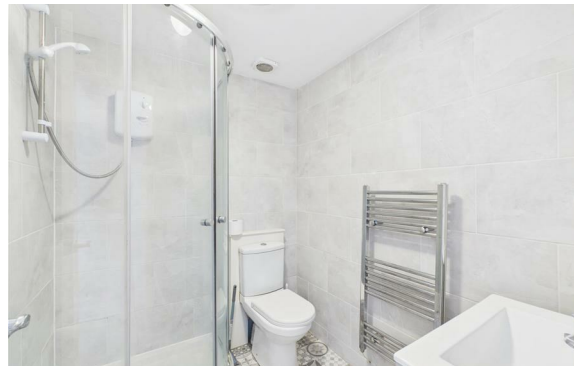
Leasehold residue of 999 years.

Management Fee: Please refer to agent.

Council Tax Band: B

Please Note

We endeavour to make our sales details accurate and reliable but they should not be relied on as statements or representations of fact and they do not constitute any part of an offer or contract. The seller does not make any representation or give any warranty in relation to the property and we have no authority to do so on behalf of the seller.

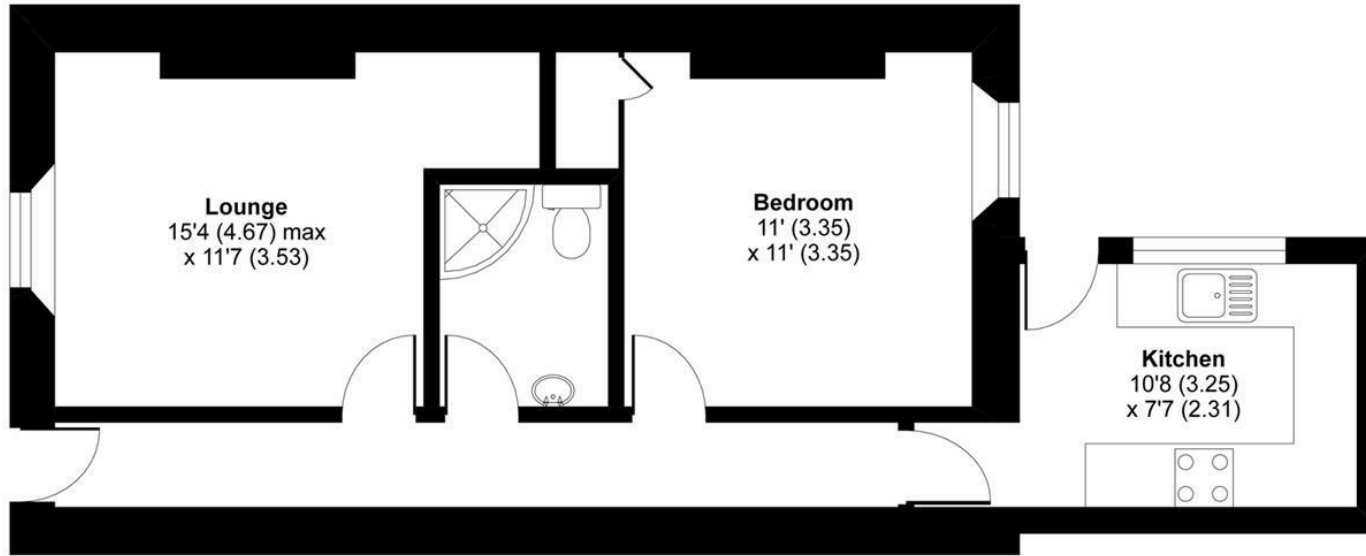




Mount Pleasant Terrace, Bristol, BS3

Approximate Area = 508 sq ft / 47.2 sq m

For identification only - Not to scale



GROUND FLOOR

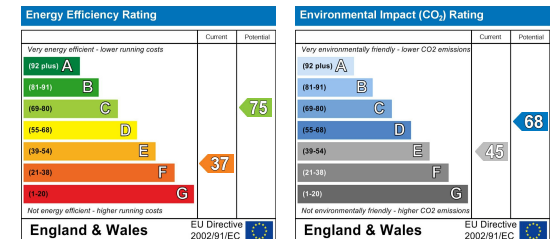


Floor plan produced in accordance with RICS Property Measurement Standards incorporating International Property Measurement Standards (IPMS2 Residential). © n/checom 2020. Produced for Hollis Morgan. REF: 611277

TEL | 0117 933 9522 | 9 Waterloo Street, Clifton, Bristol BS8 4BT

www.hollismorgan.co.uk | post@hollismorgan.co.uk

Hollis Morgan Property Limited, registered in England, registered no 7275716
Registered address, 5 Upper Belgrave Road, Clifton, Bristol BS8 2XQ



hollis
morgan
