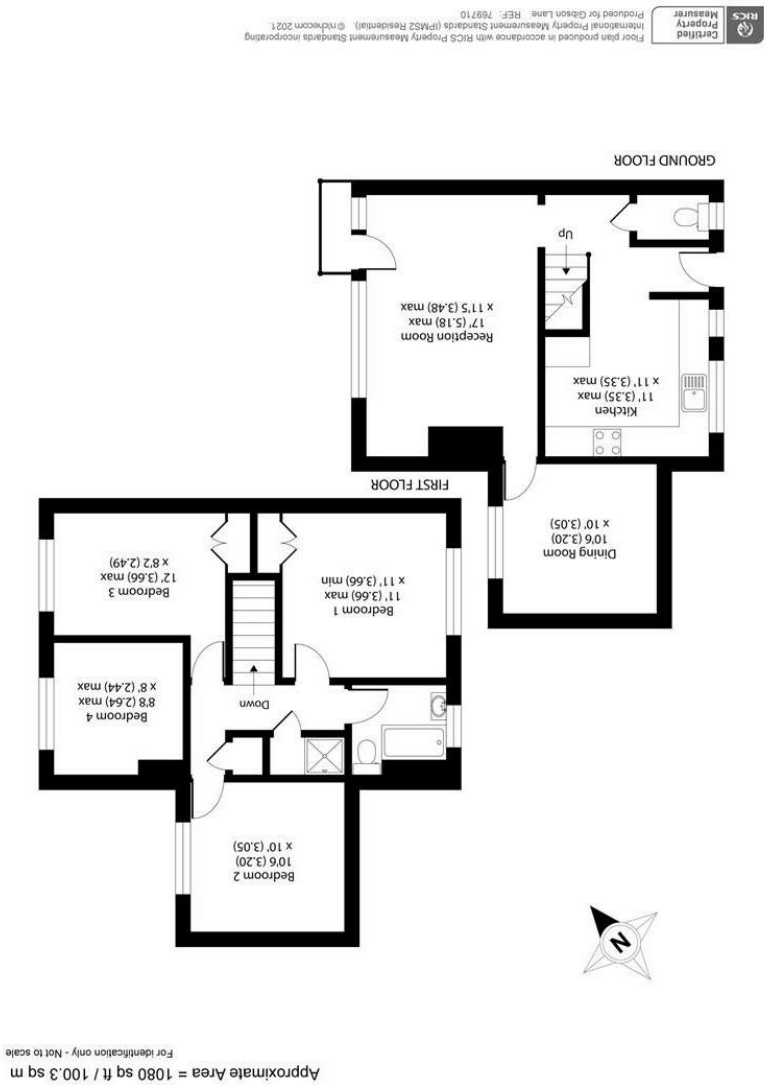


gibson lane

34 Richmond Road
Kingston upon Thames
Surrey
KT2 5ED
www.gibsonlane.co.uk
Tel: 020 8546 5444





- 5 Bedroom Split Level Flat
- Fully Fitted Separate Kitchen
- 4 Double Bedrooms
- 1 Single Bedroom
- Separate Living/Dining Room
- Fully Furnished
- Ideal For Sharers & Students
- Very Close To Roehampton University
- EPC Rating- D
- Council Tax Band - C



£2,800 Per Calendar Month

Bessborough Road,
Roehampton,
London,
SW15 4BQ

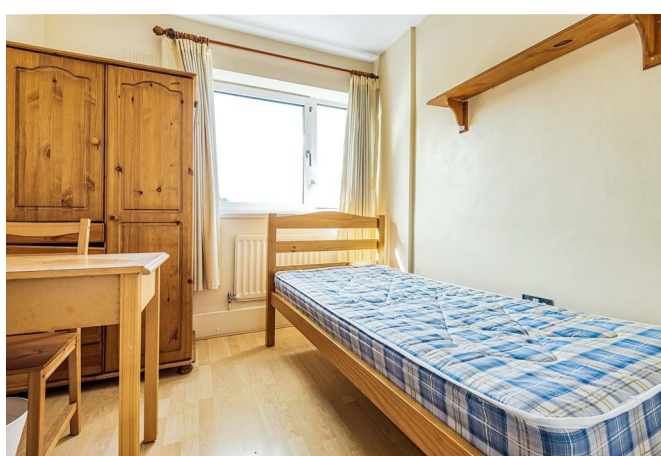


Description:

Gibson Lane present to the market a spacious 5 bedroom split level maisonette in this purpose-built block just a short walk from Roehampton University with great transport links making it ideal for students and sharers alike. The property features 4 Double Bedrooms and 1 Single Bedroom, separate kitchen, a living/dining area with sofa seating and dining table creating a generous living space with access to the private balcony. Other benefits include double glazing throughout, gas central heating, fully furnished and all amenities within walking distance.

Location:

Fareham House is located just a short walk Roehampton University. The location is well served with many different transport links which include buses to Putney, Hammersmith and Kingston, the A3 is in very close by which provides quick access in and out of London. Close to various Universities and Queen Mary's Hospital.



Furnishing: Furnished
Local Authority: Wandsworth
Council Tax Band: C
Available Date: 23rd March 2026
Deposit: £3,230
Tenancy Term: Long Term