

Directions

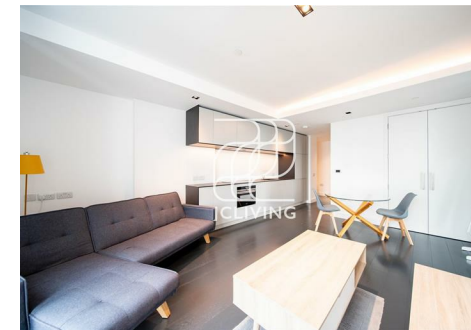
Viewings

Viewings by arrangement only. Call 02033696888 to make an appointment.

EPC Rating

B

Energy Efficiency Rating		Current	Potential
Very energy efficient - lower running costs			
(92 plus) A			
(81-91) B		84	
(69-80) C			
(55-68) D			
(39-54) E			
(21-38) F			
(1-20) G			
Not energy efficient - higher running costs			
England & Wales		EU Directive 2002/91/EC	



CN994 Apartment 2403, Amory Tower 203 Marsh Wall, London, E14 9ZN

£650 Per Week

- 710 square ft
- Residents gym
- Residents swimming pool
- Fantastic transport links
- Floor to ceiling windows
- Open plan kitchen and reception area
- 24 hour concierge
- Residents spa facilities
- Local shopping, dining and entertainment
- Council tax band E

Amory Tower 203 Marsh Wall, London E14 9ZN

*** Please quote reference JC23111326 when contacting the agency ***

Nestled in the vibrant area of Canary Wharf, London, this exquisite studio flat offers a modern living experience in a prime location. Spanning an impressive 710 square feet, this new build property, completed in 2021, is designed to cater to the needs of contemporary urban dwellers.

The flat features a well-appointed reception room that integrates with the kitchen area, creating a wide and airy space with lots of natural light. The single bedroom is perfect for individuals or couples seeking a stylish and functional home. The bathroom is thoughtfully designed, providing a comfortable and relaxing environment.

Residents of this remarkable development enjoy access to a range of exclusive amenities, including a private club facility, a state-of-the-art gym, a luxurious swimming pool, and a rejuvenating spa. The 24/7 concierge and security services offer peace of mind, ensuring a safe and convenient living experience.

Situated in a prime location, this property is surrounded by world-class dining, shopping, and entertainment options, making it an ideal choice for those who appreciate the finer things in life. The excellent transport



Council Tax Band: E

