



65 Chesterfield Road, Huthwaite, NG17 2PZ

Guide Price **£145,000**





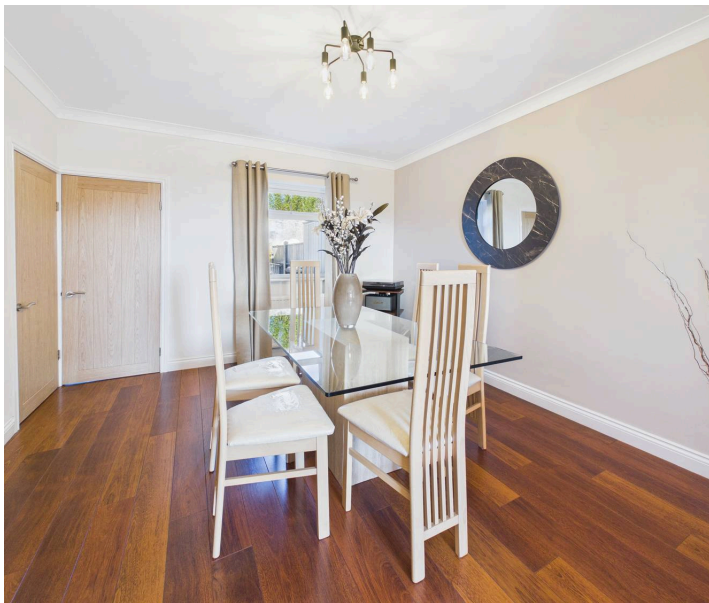
65 Chesterfield Road

Huthwaite, Sutton-In-Ashfield

Well presented end terrace with 3 bedrooms, modern kitchen, stylish lounge, fitted wardrobes, shower room, low maintenance garden, gas heating, double glazing, and stunning views. Council Tax band: A

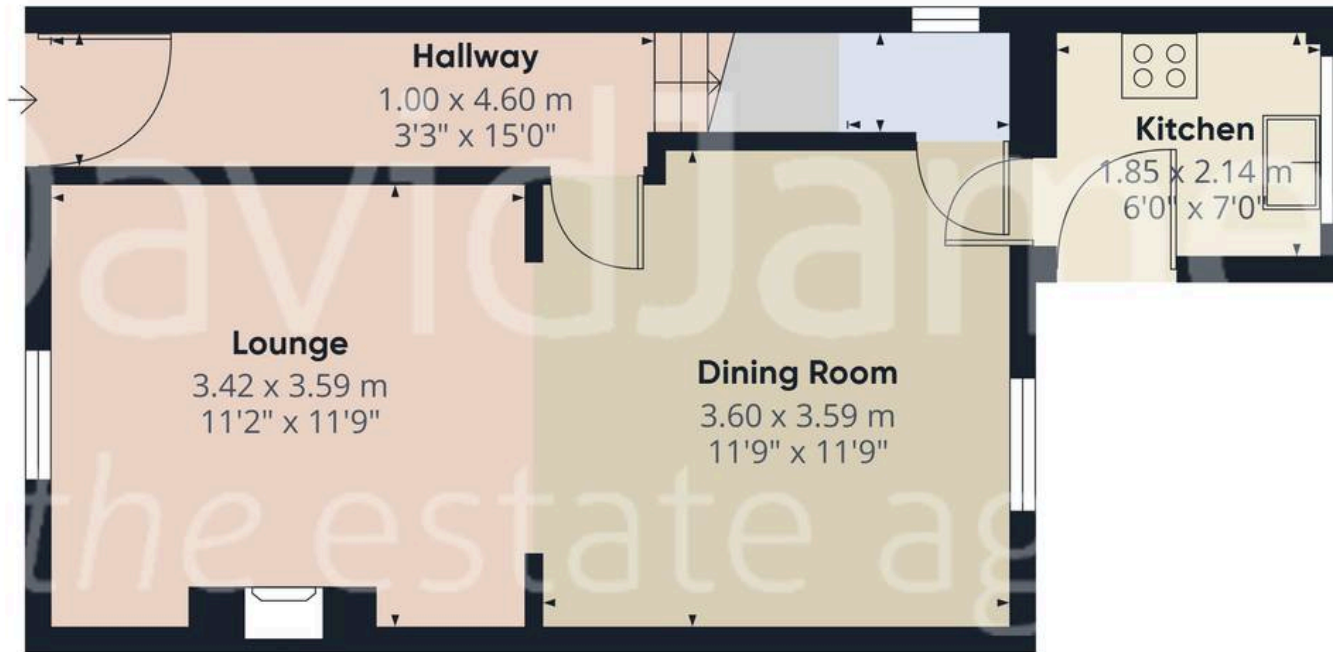
Tenure: Freehold

- Well presented end terraced house
- Three bedrooms, bedroom one with fitted wardrobes
- Entrance hall, landing with feature glazed balustrade and Oak handrails
- Lounge with laminate flooring and feature fireplace with Dru gas fire and marble surround
- Separate but adjoining dining room with laminate flooring
- Modern kitchen with white handleless units and integrated oven, hob, extractor and microwave
- First floor fully tiled shower room/Wc with walk-in shower area with mains-fed shower
- Combination gas central heating, UPVC double glazing and composite front and rear doors, alarm system
- Attractive low maintenance rear garden with artificial lawn and borders
- Stunning views to the front elevation

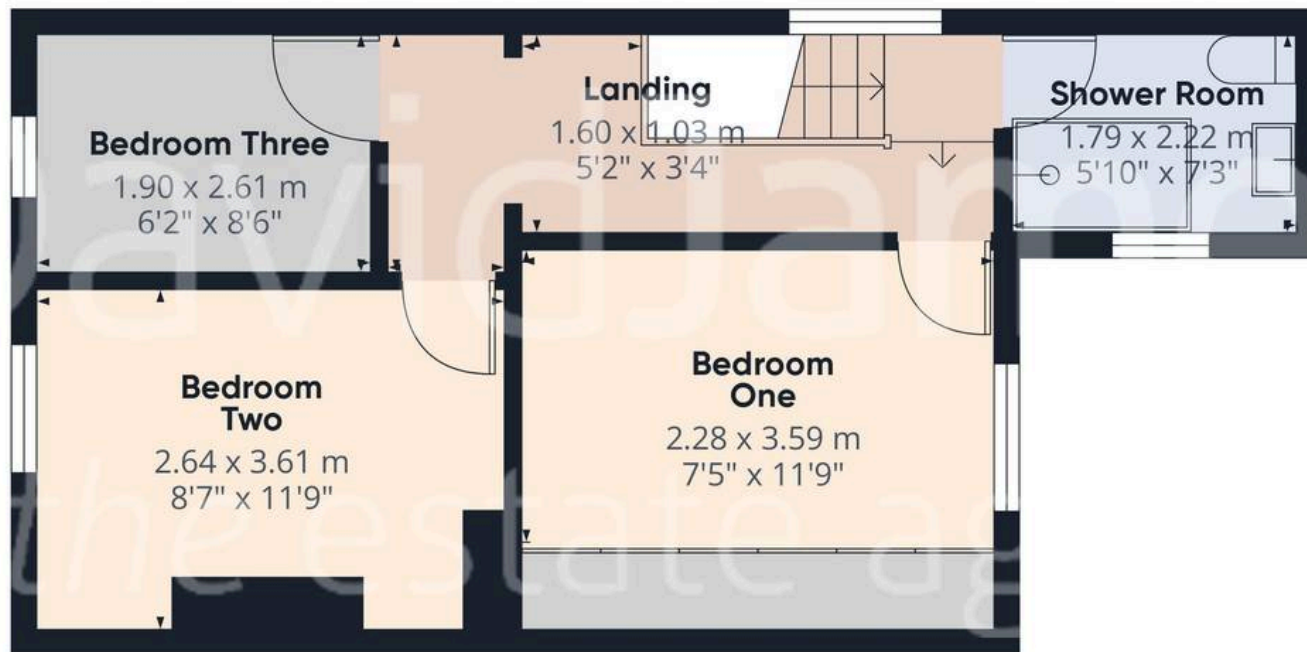








Floor 0



Floor 1



Approximate total area⁽¹⁾

69.7 m²

750 ft²

(1) Excluding balconies and terraces

Calculations reference the RICS IPMS 3C standard. Measurements are approximate and not to scale. This floor plan is intended for illustration only.

GIRAFFE360



David James Estate Agents

43 Forest Street, Sutton-in-Ashfield - NG17 1DA

01623 554084 • sutton@david-james.com • www.david-james.com

These particulars are produced in good faith and are set out as a general guide only. Measurements are approximate and floor plans are for illustrative purposes only. Services have not been tested. We have established professional relationships with third-party suppliers for the provision of services to Clients, details of which can be found on the property listing page on our website.