



Clapham Road, SW9

£450,000

Dexters



Clapham Road, SW9

An immaculately presented second-floor, two bedroom, two bathroom modern apartment. The property comprises a large open-plan living/kitchen/dining area, a master bedroom with en suite, a further double bedroom, and a family bathroom. The apartment further benefits from air conditioning, lift access, and a well-maintained communal courtyard.

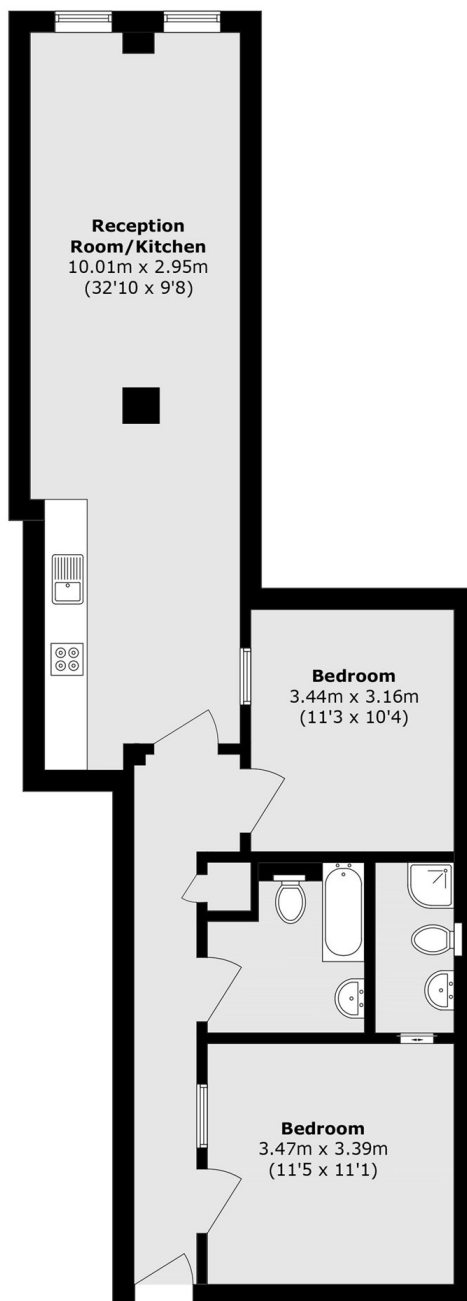
Clapham Road provides easy access to the many shops, restaurants and bars of Clapham High Street and Clapham Old Town, both Clapham North & Stockwell Stations are just around the corner.

Features

- Two Double Bedrooms
- Two Bathrooms
- Modern Development
- Lift Access
- Air Conditioning
- Communal Courtyard



Clapham Road, London, SW9



Total area (approx.): 71.3 sq. m (767.4 sq. ft)