



## Valley Road, SE14

### £400,000

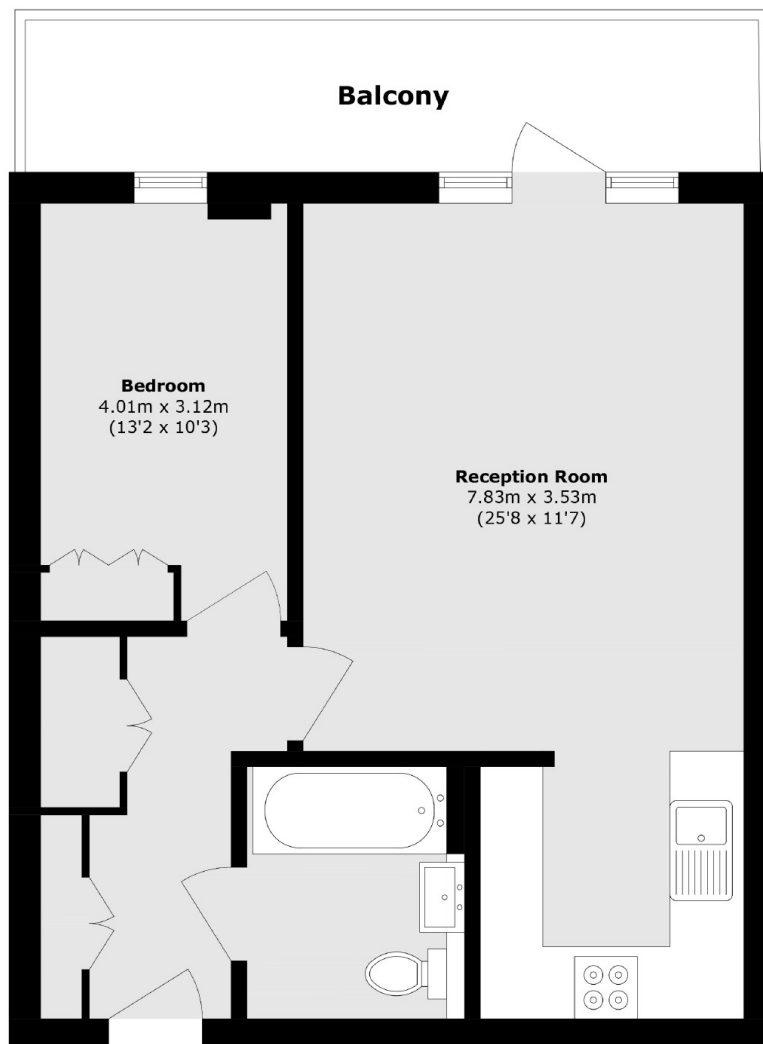
Set within a modern development, this well-presented third-floor apartment offers a bright and spacious layout, high-quality finishes, and a generous private balcony spanning the full width of the property. The open-plan kitchen/living space floods with natural light due to very large windows, with direct access to the private balcony. The bedroom also opens onto the balcony and includes an upgraded built-in wardrobe. Additional features include secure private bike storage and excellent natural light throughout.

The apartment is ideally situated near the vibrant Deptford Market Yard - celebrated for its eclectic mix of local culture, independent traders, eateries, and bars. Nature lovers will appreciate the nearby green spaces, including Fordham Park, Deptford Park, and Folkestone Gardens. Excellent transport links make commuting easy, with New Cross station just a 5-minute walk and Deptford station about 9 minutes away, providing direct routes to London Bridge in just 10

### Features

- One Bedroom Apartment
- Third Floor
- Private Balcony
- Lift Access
- Secure Bike Store
- Close To Transport Links

# Valley Road, London, SE14



Total area (approx.): 52.8 sq. m (568.3 sq. ft)  
Balcony area (approx.): 10.2 sq. m (109.7 sq. ft)