



Bridle Close, Plymouth PL7 5LF

welcome to

Bridle Close, Plymouth

A lovely two bedroom semi-detached home in a quiet Plympton cul-de-sac, offered with no onward chain. This well-presented property features a bright living space, spacious conservatory, two good-sized bedrooms, and a beautifully maintained rear garden. Call FOX AND SONS to book your viewing!



Entrance Porch

Coat pegs and door access to the lounge.

Lounge

Sash double glazing to the front elevation with fitted blinds, radiator, stairs to the first floor landing and door access to the kitchen.

Kitchen

Double glazing to the rear with sliding doors to the conservatory, integrated cooker, hob and extractor fan, and space for appliances.

Conservatory

Currently used as a dining room, double glazed windows and door to the garden.

First Floor Landing

Door access to bedroom 1,2 and the bathroom and a loft hatch.

Bedroom 1

Double glazing to the rear and fitted blind and a radiator.

Bedroom 2

Sash double glazed window to the front elevation with a fitted blind and a radiator.

Bathroom

Obscure double glazing to the side elevation, wc, bath with overhead shower, sink and storage cupboard.

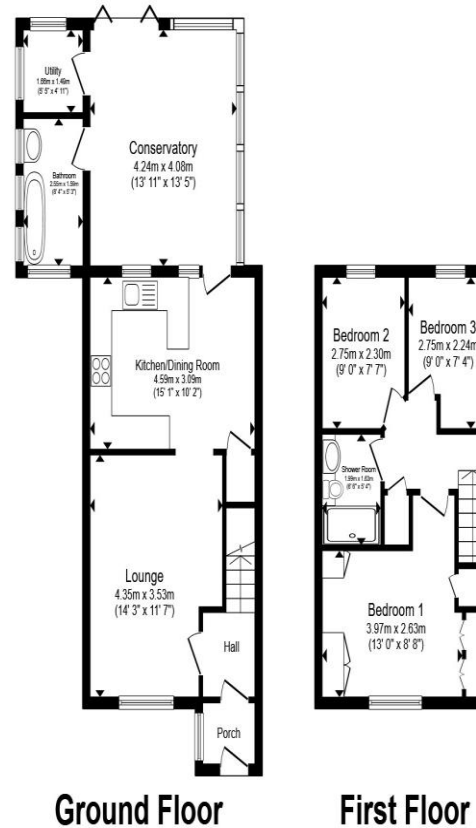
Rear Garden

Patio and laid lawn, rear access gate.

Front Garden

Patio and lawn

Parking



Total floor area 97.0 m² (1,044 sq.ft.) approx

This floor plan is for illustrative purposes only. It is not drawn to scale. Any measurements, floor areas (including any total floor area), openings and orientation are approximate. No details are guaranteed, they cannot be relied upon for any purpose and they do not form part of any agreement. No liability is taken for any error, omission or misstatement. A party must rely upon its own inspection(s). Powered by www.propertybox.io



view this property online fox-and-sons.co.uk/Property/PYP104617



welcome to

Bridle Close, Plymouth

- No Chain
- Two Bedrooms
- Semi Detached
- Allocated Parking
- Rear Garden

Tenure: Freehold EPC Rating: D
Council Tax Band: C

offers in excess of

£230,000



Please note the marker reflects the
postcode not the actual property

view this property online fox-and-sons.co.uk/Property/PYP104617



Property Ref:
PYP104617 - 0004

1. MONEY LAUNDERING REGULATIONS Intending purchasers will be asked to produce identification documentation at a later stage and we would ask for your co-operation in order that there is no delay in agreeing the sale. 2. These particulars do not constitute part or all of an offer or contract. 3. The measurements indicated are supplied for guidance only and as such must be considered incorrect. Potential buyers are advised to recheck measurements before committing to any expense. 4. We have not tested any apparatus, equipment, fixtures or services and it is in the buyers interest to check the working condition of any appliances. 5. Where an EPC, or a Home Report (Scotland only) is held for this property, it is available for inspection at the branch by appointment. If you require a printed version of a Home Report, you will need to pay a reasonable production charge reflecting printing and other costs. 6. We are not able to offer an opinion either written or verbal on the content of these reports and this must be obtained from your legal representative. 7. Whilst we take care in preparing these reports, a buyer should ensure that his/her legal representative confirms as soon as possible all matters relating to title including the extent and boundaries of the property and other important matters before exchange of contracts.

fox & sons



01752 344349



plympton@fox-and-sons.co.uk



143 Ridgeway, Plympton, PLYMOUTH, Devon,
PL7 2HJ



fox-and-sons.co.uk