

Property ref: 161585

Fairhaven Drive, Reading, RG2 6BJ

£1,300 PCM

HASLAMs
Lettings



A beautifully presented, one bedroom apartment on the ground floor located in the popular Green Park development.
Reading Borough Council tax band C.

Water supply: Mains

Drainage info: Mains

Electricity supply: Mains

Gas supply: Mains

Broadband/Mobile Info: Connections available. For an indication of specific speeds and supply of Broadband and Mobile, we advise applicants go to the Ofcom website 'Broadband and Mobile Coverage Checker'.

Available 13/04/2026

- Double bedroom with built in wardrobes
- Fully fitted kitchen with appliances
- Family bathroom with shower over the bath
- Gas central heating; EPC rating B
- One allocated parking space; Outdoor patio area
- Furnished; Managed by HASLAMs

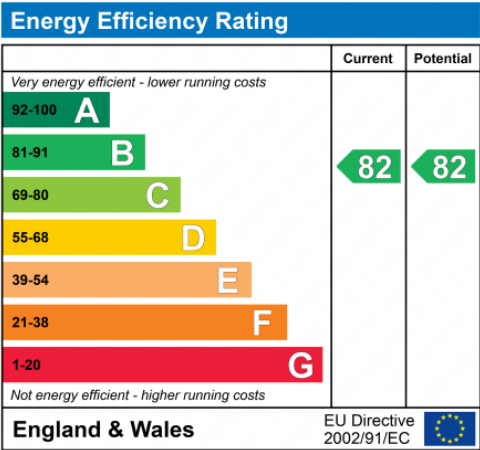
*Fees For Assured Shorthold Tenancies: when you rent a property from us you will be required to pay a sum equivalent to one weeks' rent for a holding deposit. Upon successful application, this amount will be off set against your first months' rent. You will also be required to pay a security deposit equivalent to 5 weeks' rent which will be held and protected in line with Deposit legislation. For more information about our fees please visit: www.haslams.net
Fees for all other tenancies (Non Housing Act Tenancies / Company Lets): when you rent a property from us we will charge you a one-off fee per property. This charge is the equivalent of 15 days of the monthly rental charge (+VAT) with a minimum fee of £450 (inc.VAT) up to a maximum of £650 (inc.VAT). Other fees may apply depending on your circumstances.

0118 960 1055

lettings@haslams.net www.haslams.net

Haslams Estate Agents Ltd, 159 Friar Street, Reading, Berkshire, RG1 1HE

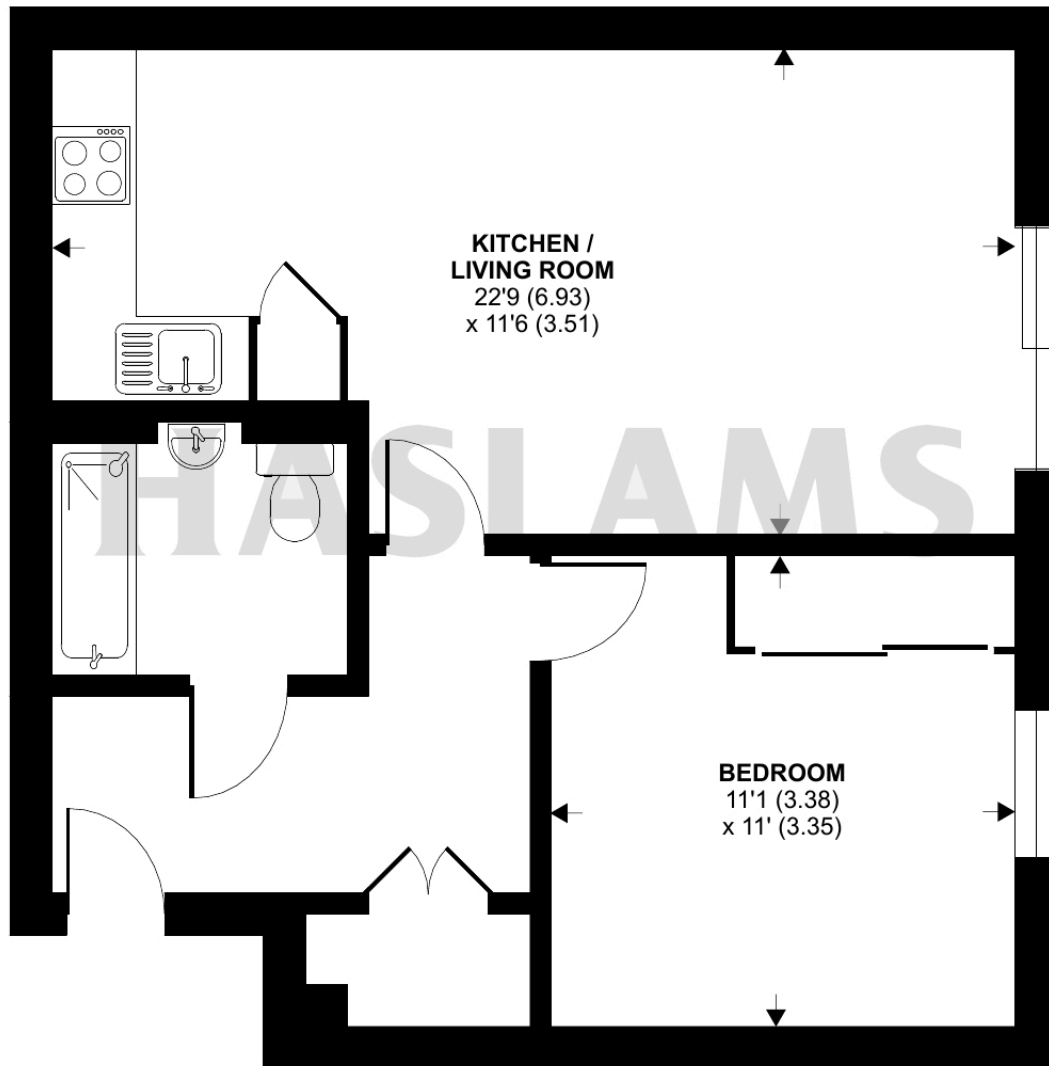




Fairhaven Drive, Reading, RG2

Approximate Area = 510 sq ft / 47.4 sq m

For identification only - Not to scale



GROUND FLOOR



Floor plan produced in accordance with RICS Property Measurement Standards incorporating International Property Measurement Standards (IPMS2 Residential). © n1cheom 2024.
Produced for Haslamss. REF: 1115503