



ESTATE AGENTS

www.cwestateagents.co.uk



27 Carisbrook Drive, Winsford CW7 1LN

Offers in excess of £280,000

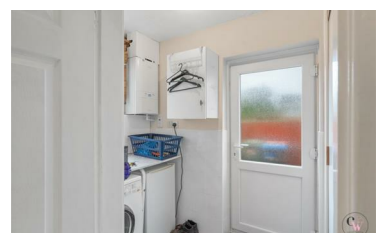


Carisbrook Drive is well positioned within Winsford, offering a wide range of local amenities including supermarkets, shops, cafes, leisure facilities and healthcare services. The area is well regarded for families, with a selection of highly rated primary schools nearby including Overhall and Darnhall.

Sitting on a generous plot, this beautifully presented detached family home offers spacious, versatile accommodation ideal for modern family living. Occupying a fantastic sized plot, the property benefits from a driveway providing ample off-road parking, an integral garage, and a superb enclosed rear garden complete with patio area and attractive ornamental pond – perfect for relaxing or entertaining.

You are welcomed via an entrance porch into a spacious central hallway, which immediately sets the tone for the space on offer. The hallway provides access

- Well positioned within Winsford.
- Sitting on a generous plot is this beautifully presented detached family home.
- Driveway and off road parking
- Four good sized bedrooms
- Downstairs cloakroom and utility room
- Large conservatory



01606 514 152 info@cwestateagents.co.uk
 @CWestateAgent @CWestateAgents