



## Teignmouth Road, NW2 £500,000

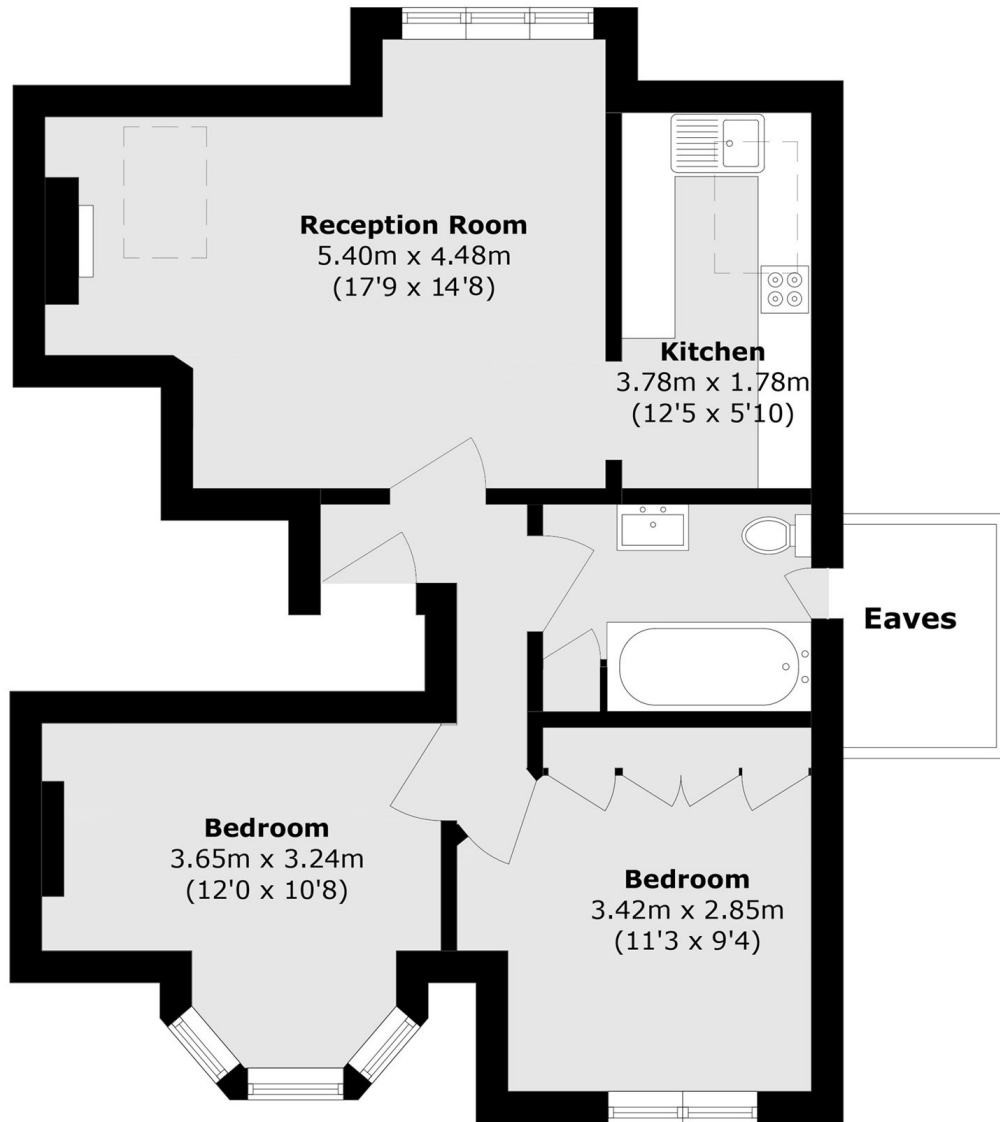
A bright and well presented two bedroom top floor apartment offering over 580 sq. Ft. Of well proportioned space. The property features a spacious reception room with ample space for both living and dining, a separate fitted kitchen, two generous double bedrooms, a contemporary family bathroom and useful eaves storage. The property's benefits from an abundance of natural light throughout. Ideally suited to first-time buyers, downsizers or investors, the property is offered with a share of the freehold and enjoys a convenient position close to excellent local amenities and transport links.

Teignmouth Road is a sought after residential road in the Mapesbury area. Ideally positioned within easy reach of the wide range of shops, cafés and restaurants along Cricklewood Broadway. Cricklewood Thameslink Station provides fast connections into Central London, while Willesden Green Underground Station (Jubilee Line) is also within easy reach. The green open spaces of Gladstone Park are nearby, along with a selection of highly regarded local schools and convenient bus routes.

### Features

- Two Double Bedrooms
- Separate Kitchen
- Share Of Freehold
- Excellent Transport Links
- Top Floor Flat
- Close To Local Amenities

Teignmouth Road,  
London, NW2



Total area (approx.): 54.7 sq. m (588.7 sq. ft)  
(Excluding Eaves )