



**Connells**

Ridgeway Court Bentley Road North  
Walsall



### Property Description

Benefiting from NO UPWARD CHAIN this first floor flat is an ideal investment opportunity, conveniently positioned close to transport links and local amenities. Offering spacious accommodation the property briefly comprises of private entrance, lounge, fitted kitchen, two bedrooms, bathroom and allocated parking.

### Auctioneer's Comments

This property is offered through Modern Method of Auction. Should you view, offer or bid your data will be shared with the Auctioneer, iamsold Limited. This method requires both parties to complete the transaction within 56 days, allowing buyers to proceed with mortgage finance (subject to lending criteria, affordability and survey).

The buyer is required to sign a reservation agreement and make payment of a non-refundable Reservation Fee of 4.5% of the purchase price including VAT, subject to a minimum of £6600.00 including VAT. This fee is paid in addition to purchase price and will be considered as part of the chargeable consideration for the property in the calculation for stamp duty liability. Buyers will be required to complete an identification process with iamsold and provide proof of how the purchase would be funded.

The property has a Buyer Information Pack containing documents about the property. The documents may not tell you everything you need to know, so you must complete your own due diligence before bidding. A sample

of the Reservation Agreement and terms and conditions are contained within this pack. The buyer will also make payment of no more than £349 inc. VAT towards the preparation cost of the pack. Please confirm exact costs with the auctioneer.

The estate agent and auctioneer may recommend the services of other providers to you, in which they will be paid for the referral. These services are optional, and you will be advised of any payment, in writing before any services are accepted. Listing is subject to a start price and undisclosed reserve price that can change.

### Access Via

Entrance hall having stairs rising to first floor.

### First Floor

### Landing

Having storage cupboard with loft access point, radiator and doors to:

### Lounge

13' 10" x 13' 10" max ( 4.22m x 4.22m max )  
Having a double glazed window to the front and radiator.

### Fitted Kitchen

10' 5" x 9' 6" ( 3.17m x 2.90m )  
Having a double glazed window to the side, fitted wall and base units with work-tops over,

stainless steel sink and drainer, integrated oven and hob, plumbing for washing machine, GCH boiler and tiling to splash-backs.

### **Bedroom One**

13' 8" max x 10' 7" max ( 4.17m max x 3.23m max )

Having a double glazed window to the front and radiator.

### **Bedroom Two**

10' 3" x 7' 10" ( 3.12m x 2.39m )

Having a double glazed window to the side, storage cupboard and radiator.

### **Bathroom**

Having a double glazed window to the rear, bath with shower over, wash-hand basin, low level wc, radiator and tiled floor.

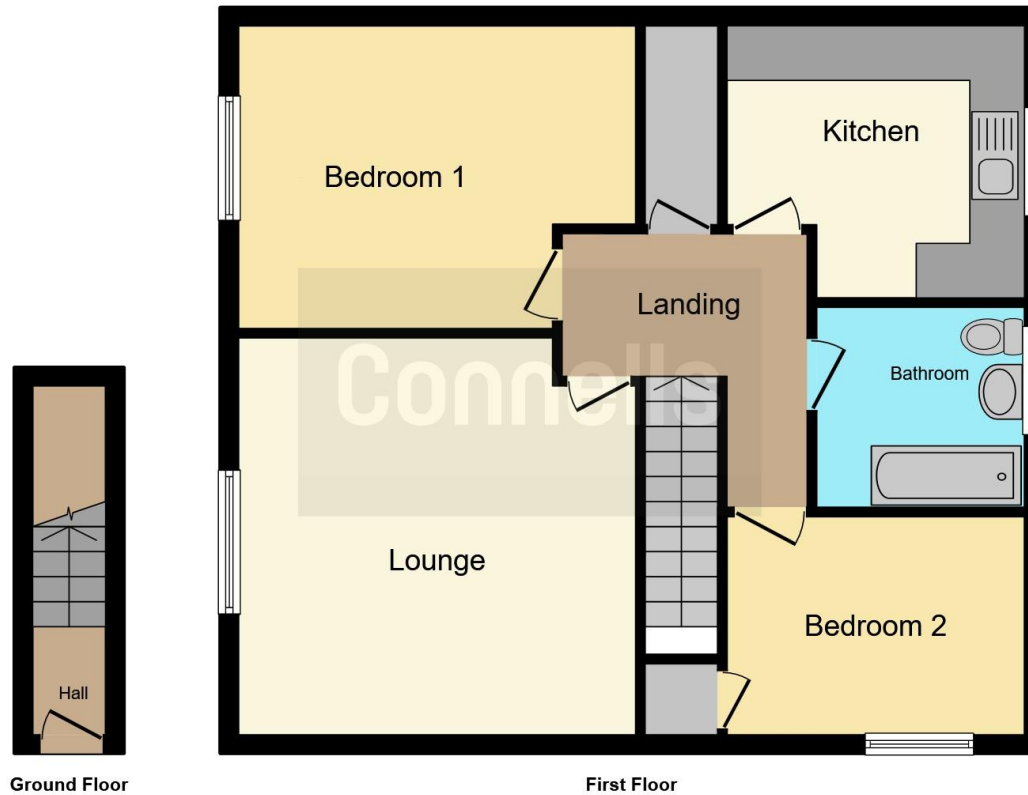
### **Outside**

There is an allocated parking space.









This floor plan is for illustrative purposes only. It is not drawn to scale. Any measurements, floor areas (including any total floor area), openings and orientation are approximate. No details are guaranteed, they cannot be relied upon for any purpose and they do not form part of any agreement. No liability is taken for any error, omission or misstatement. A party must rely upon its own inspection(s). Powered by [www.focalagent.com](http://www.focalagent.com)

To view this property please contact Connells on

**T 01922 721 000**  
**E [walsall@connells.co.uk](mailto:walsall@connells.co.uk)**

57-59 Bridge Street  
 WALSALL WS1 1JQ

EPC Rating: C

Council Tax  
 Band: A

Service Charge: Ask  
 Agent

Ground Rent:  
 Ask Agent

Tenure: Leasehold

**view this property online [connells.co.uk/Property/WSL318255](http://connells.co.uk/Property/WSL318255)**

This is a Leasehold property. We are awaiting further details about the Term of the lease. For further information please contact the branch. Please note additional fees could be incurred for items such as Leasehold packs.



1. MONEY LAUNDERING REGULATIONS Intending purchasers will be asked to produce identification documentation at a later stage and we would ask for your co-operation in order that there will be no delay in agreeing the sale. 2. These particulars do not constitute part or all of an offer or contract. 3. The measurements indicated are supplied for guidance only and as such must be considered incorrect. Potential buyers are advised to recheck measurements before committing to any expense. 4. We have not tested any apparatus, equipment, fixtures, fittings or services and it is in the buyers interest to check the working condition of any appliances.

Connells Residential is registered in England and Wales under company number 1489613, Registered Office is Cumbria House, 16-20 Hockliffe Street, Leighton Buzzard, Bedfordshire, LU7 1GN. VAT Registration Number is 500 2481 05.

**See all our properties at [www.connells.co.uk](http://www.connells.co.uk) | [www.rightmove.co.uk](http://www.rightmove.co.uk) | [www.zoopla.co.uk](http://www.zoopla.co.uk)**

Property Ref: WSL318255 - 0007