



OVER 60?

Secure this property
for up to **59% less!**

Price

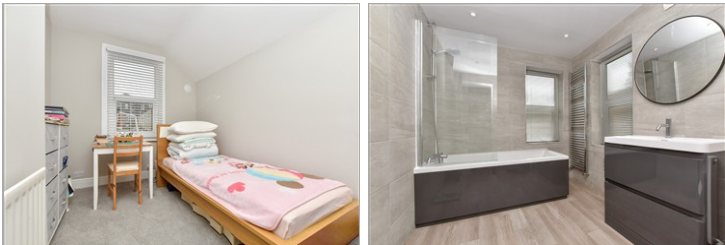
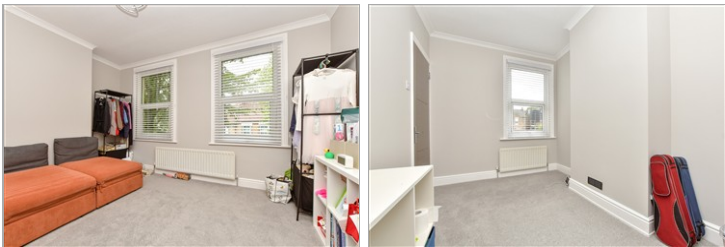
£475,000

Freehold

3x  1x  1x 

**Tharp Road, Wallington,
Surrey, SM6**

cubitt&west
Helping you move forwards



Main features

- Chain-free Victorian mid-terrace house
- Recently refurbished throughout
- Open-plan lounge/dining area
- Private rear garden
- Situated close to Mellows Park within easy reach of Wallington station

Accommodation

GROUND FLOOR

Entrance Hall

Lounge/Dining Area: 24'3 x 13'7 (7.40m x 4.14m)

Kitchen: 11'3 x 8'0 (3.43m x 2.44m)

Bathroom: 9'8 x 7'2 (2.95m x 2.19m)

FIRST FLOOR

Bedroom 1: 13'8 x 10'3 (4.17m x 3.13m)

Bedroom 2: 11'7 x 7'8 (3.53m x 2.34m)

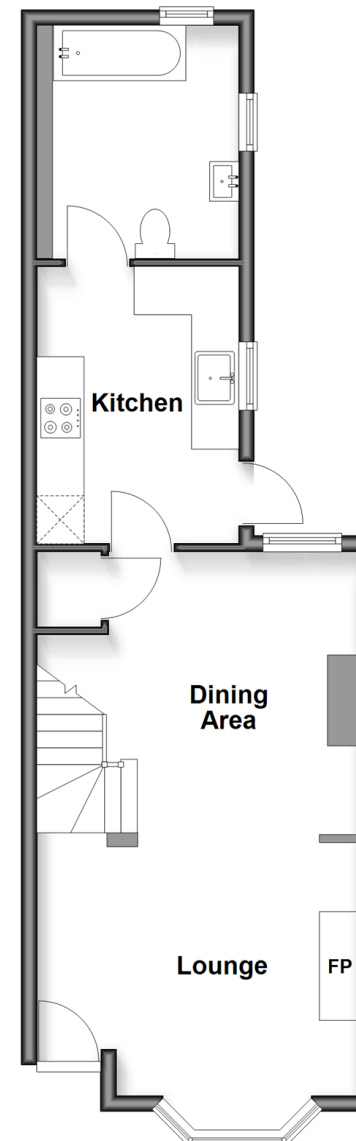
Bedroom 3: 11'1 x 8'3 (3.38m x 2.52m)

OUTSIDE

Rear Garden

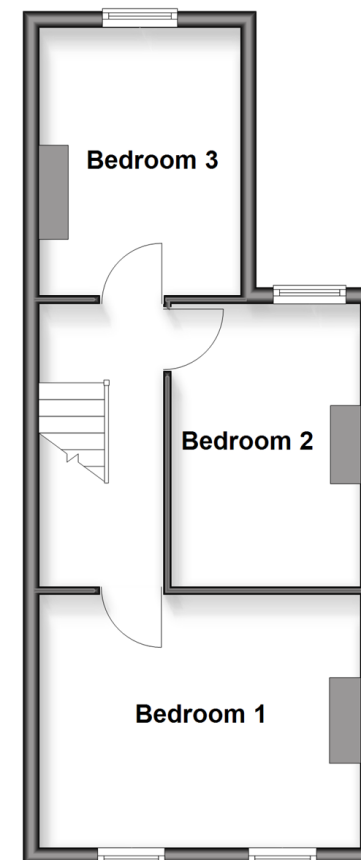
Ground Floor

Approx. 44.7 sq. metres (480.6 sq. feet)



First Floor

Approx. 36.9 sq. metres (397.6 sq. feet)



Call Wallington - 020 8647 0011 ■ cubittandwest.co.uk

- Legal advice should be taken to verify fixtures/fittings, planning, alterations and/or lease details
- Appliances & services are untested, dimensions are approximate and floor plans are not to scale
- Through a Homewise Home For Life Plan people aged 60+ can secure this property for up to 50% less, by purchasing a Lifetime Lease.



22117980/20251108/GG/NL