



DEALS GATEWAY, SE10

£220,000

Studio apartment
Second floor
Private balcony
24-hour concierge
Lap pool and gym
Energy rating: b

@marshandparsons
marshandparsons.co.uk

MARSH &
PARSONS



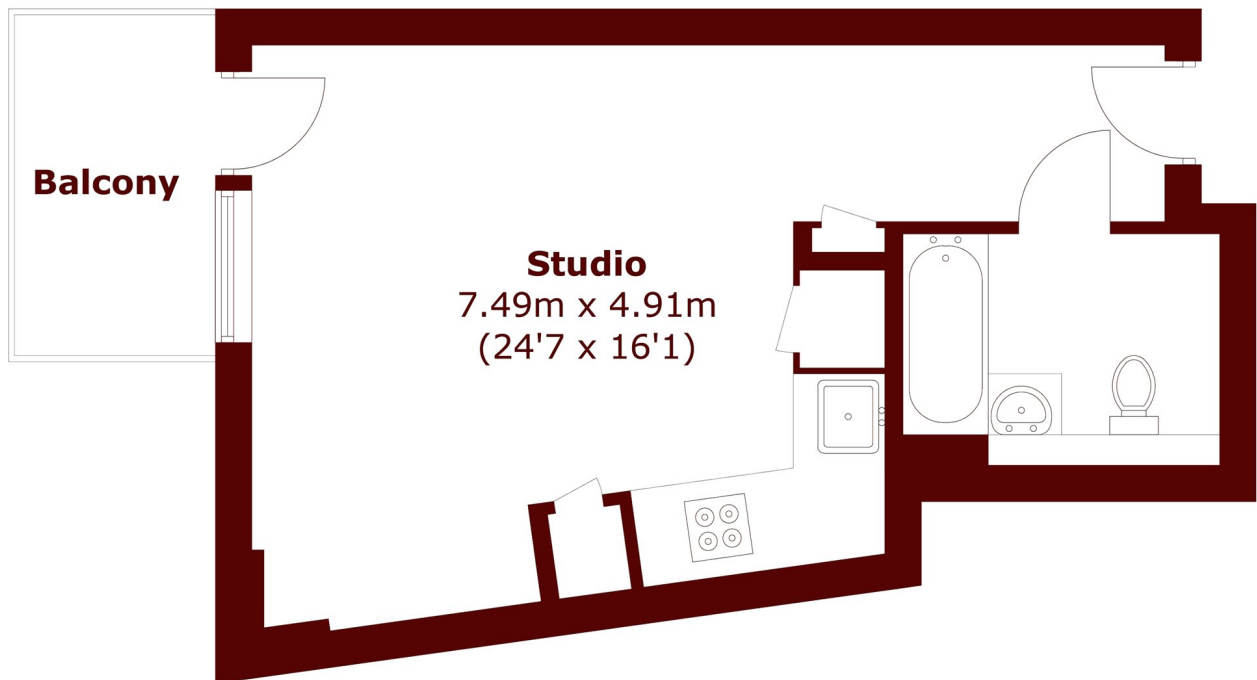
ABOUT THE PROPERTY

Bright and airy studio apartment with a modern interior, comprising an open plan kitchen, lounge with sleeping area and a shower room. Includes fitted storage and a private balcony. Situated in the popular development of Deals Gateway where residents benefit from a 24-hour concierge, access to a lap pool and gym.

Deptford Bridge DLR station is moments away on foot, offering direct access to Canary Wharf. Greenwich town centre, for Greenwich pier, its royal park and market is a short walk away.



STEP INSIDE DEALS GATEWAY



Second Floor

Total area (approx.): 32.6 sq. m (350.9 sq. ft)
Balcony area : 4.6 sq. m (49.5 sq. ft)

Greenwich
020 8312 8312

Energy Rating: B We aim to make our particulars both accurate and reliable. However, they are not guaranteed; nor do they form part of an offer or contract. If you require clarification on any points then please contact us, especially if you're traveling some distance to view. Please note that appliances and heating systems have not been tested and therefore no warranties can be given as to their good working order

MARSH &
PARSONS