



34, Ladycroft Close, Radbrook, Shrewsbury, SY3 6BB

£750 Per Month



34, Ladycroft Close, Radbrook, Shrewsbury, SY3 6BB

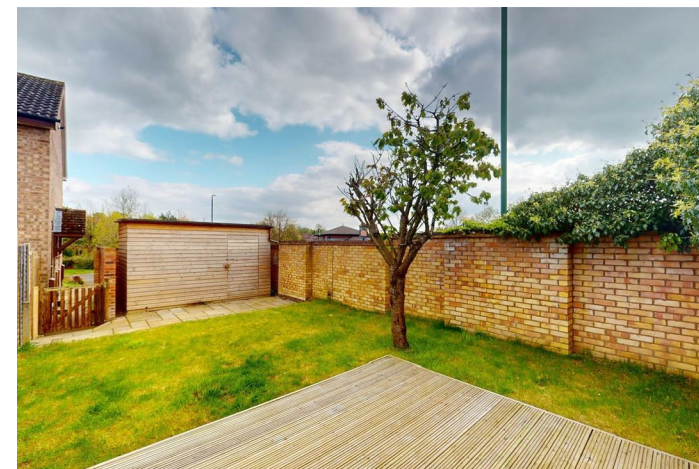
**£750 Per Month**

VIRTUAL TOUR AVAILABLE: One bedroom semi-detached house located in Radbrook, close to a host of local amenities and benefitting from a private garden, large storage shed and 3x parking spaces.

Available: 05/09/2026

## Description

Comprising; Entrance, kitchen with double oven and hob, plus space for two appliances, living room, stairs to first floor landing with store cupboard, double bedroom, bathroom with shower over bath. Private garden, large storage shed. Three parking spaces. Electric heating. Double glazed windows. EPC D.



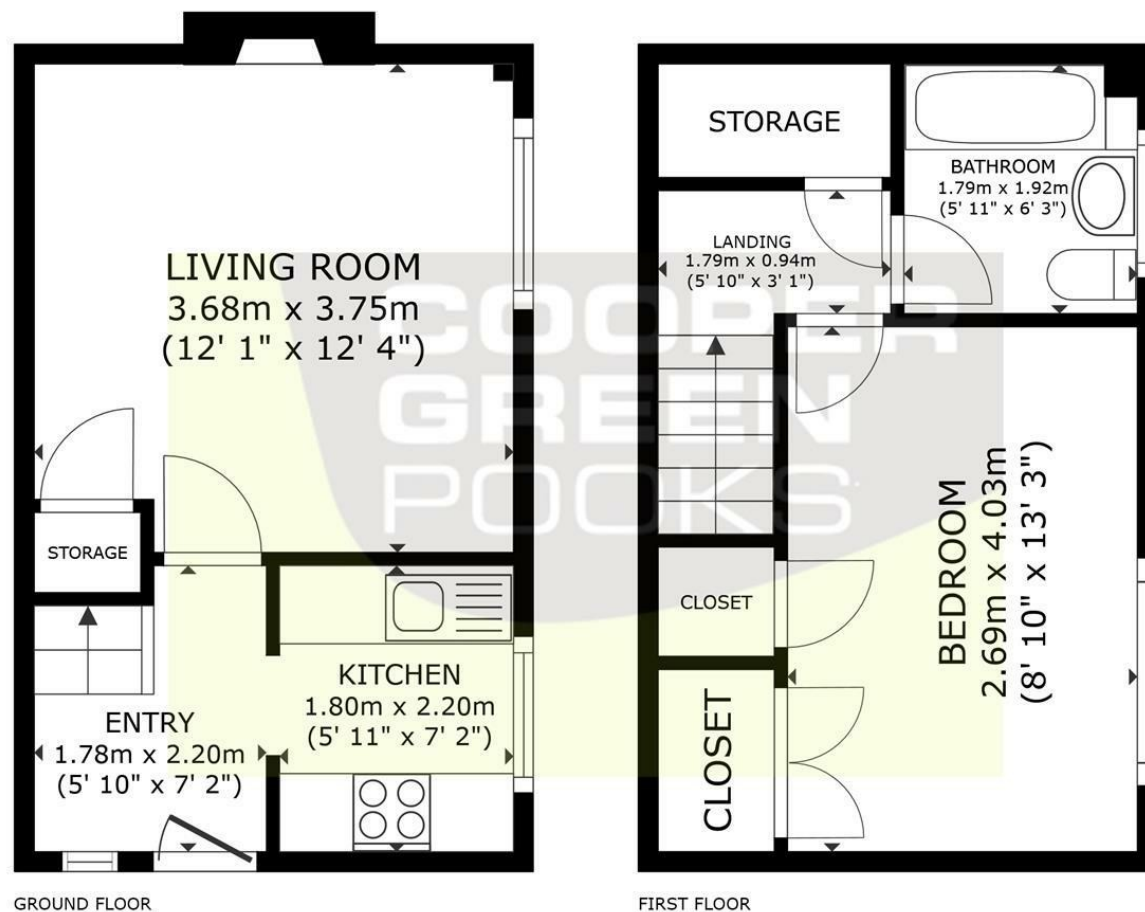
Unfurnished

Council Tax Band: A

Available: 5th September 2026

EPC: D

## Floor Plans



GROSS INTERNAL AREA  
GROUND FLOOR 22.3m<sup>2</sup> (240 sq ft), FIRST FLOOR 22.3 m<sup>2</sup> (240 sq ft)  
TOTAL 44.5 m<sup>2</sup> (479 sq ft)

SIZES AND DIMENSIONS ARE APPROXIMATE, ACTUAL MAY VARY.

These particulars, whilst believed to be accurate are set out as a general outline only for guidance and do not constitute any part of an offer or contract. Intending purchasers should not rely on them as statements of representation of fact, but must satisfy themselves by inspection or otherwise as to their accuracy. No person in this firm's employment has the authority to make or give any representation or warranty in respect of the property.