



Fellows Road, NW3

£333,000

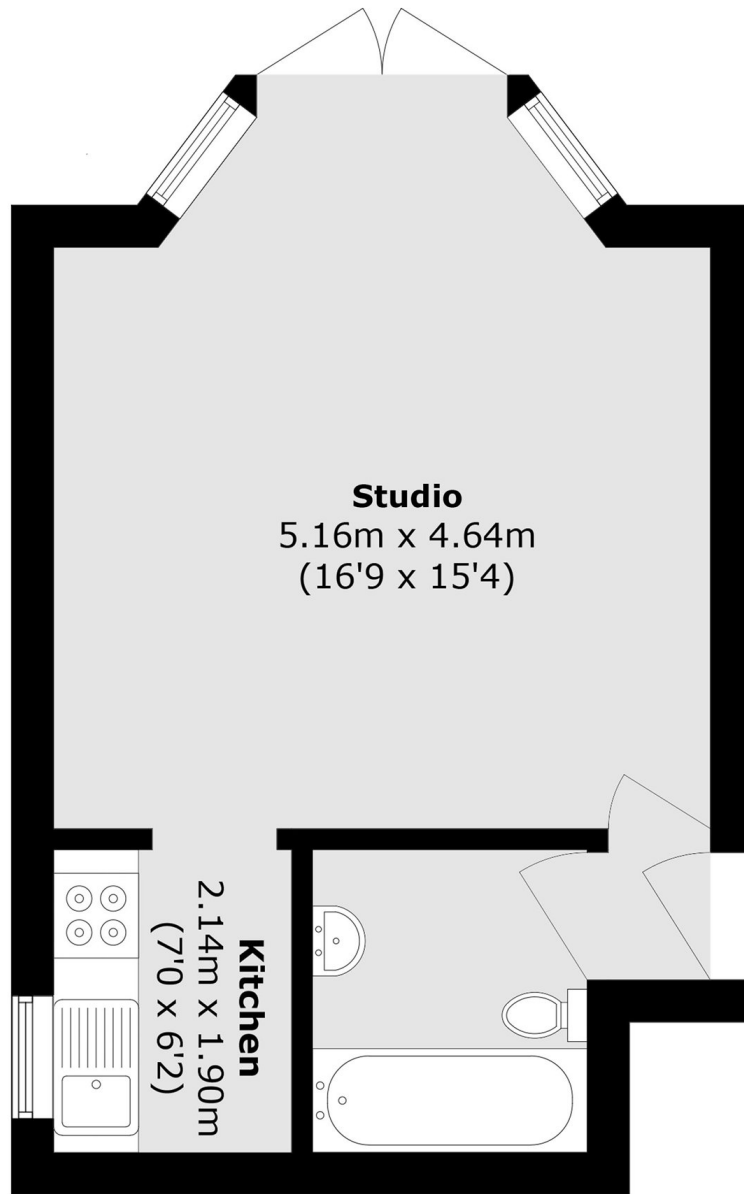
A bright ground floor studio apartment with direct access to a shared garden, offered chain free. The property is in good condition throughout and benefits from a long lease.

Fellows Road is ideally positioned between Belsize Park and Swiss Cottage, offering easy access to local cafés, shops, and amenities. The open spaces of Primrose Hill and Regent's Park are nearby. Excellent transport links include Swiss Cottage underground station (Jubilee line) and Belsize Park underground station (Northern line).

Features

- Studio
- Shared Garden
- Chain Free
- Long Lease
- Good Condition
- Primrose Hill

Fellows Road, LONDON, NW3



Total area (approx.): 30.9 sq. m (332.6 sq. ft)