



## Porchester Square, W2

£1,250,000

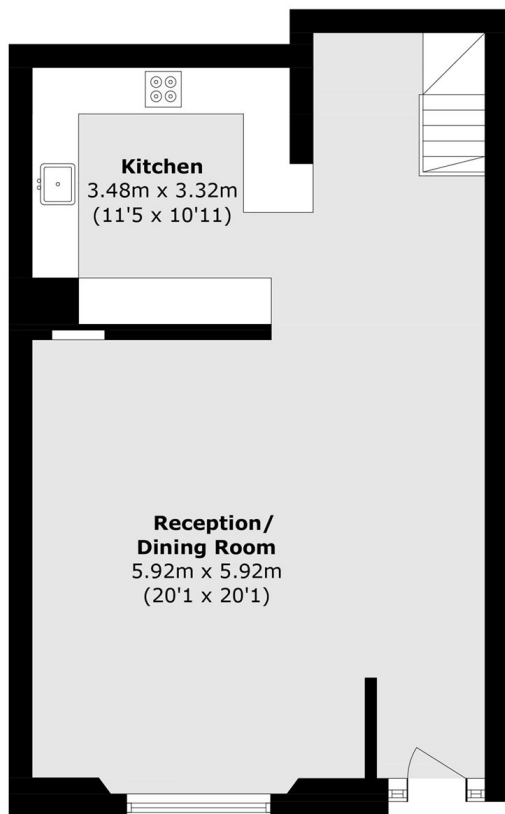
A beautifully renovated two bedroom apartment that offers over 1270 Sq.Ft of living space located in a Victorian period conversion. The property benefits from its own front door, exceptionally high ceilings, wooden floors throughout and direct views onto the gardens.

Porchester Square is positioned close to a large Waitrose and the vibrant shops, cafés and restaurants of Westbourne Grove and Queensway. Excellent transport links are nearby, including Royal Oak and Bayswater stations, with Paddington Station (0.8m) also easily accessible.

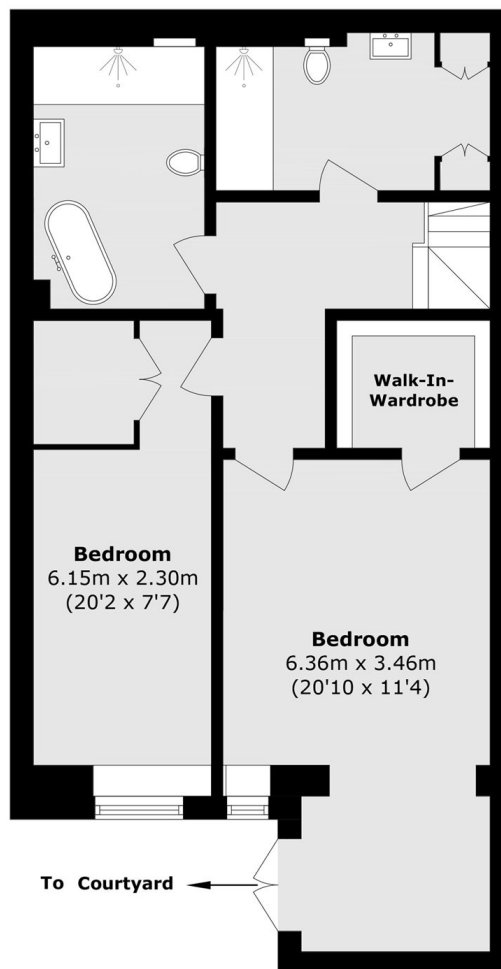
### Features

- Two Bedrooms
- Two Bathrooms
- Own Entrance
- Garden Square Views
- Duplex
- Newly Renovated

# Porchester Square, London, W2



**Raised Ground Floor**



**Lower Ground Floor**

Total area (approx.): 118.7 sq. m (1277.6 sq. ft)