



## Wharncliffe Mews, SW4

£375,000

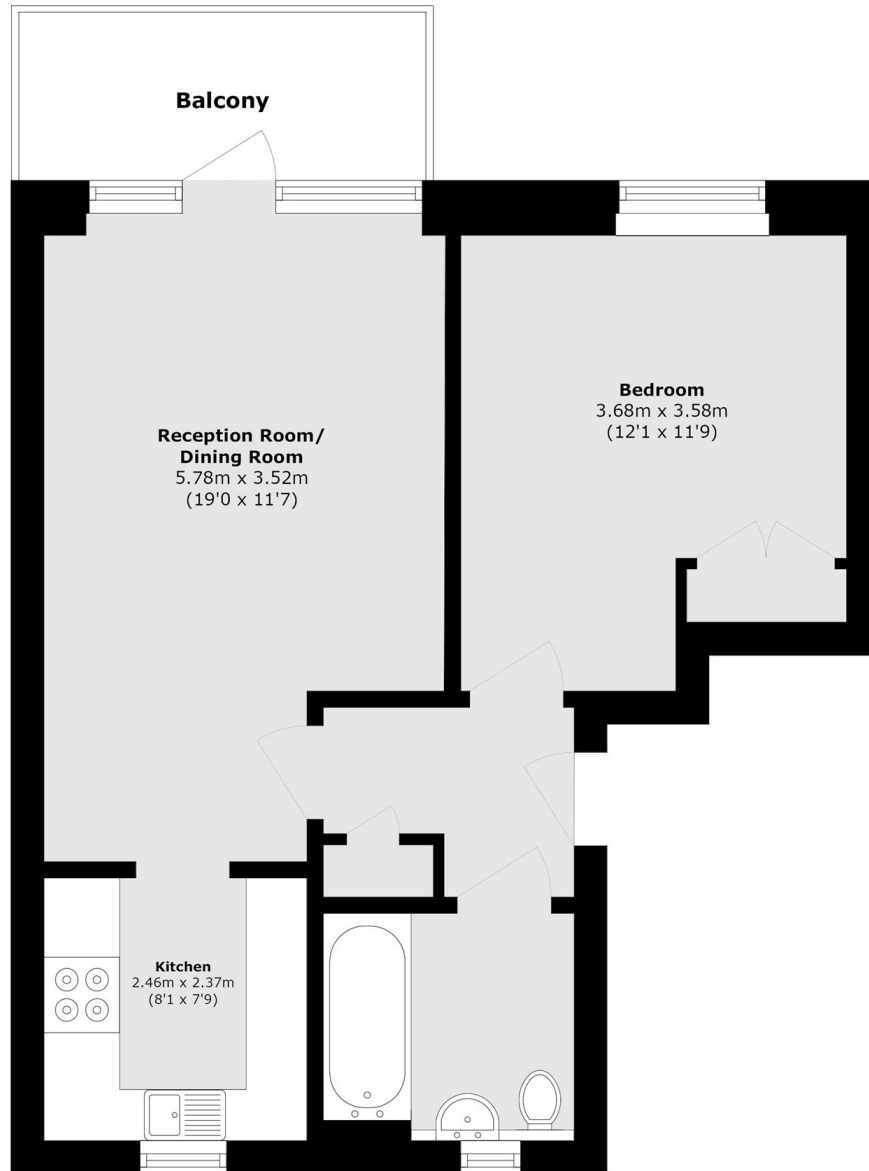
Situated on the top floor of a desirable private mews, this superb modern apartment has been comprehensively refurbished to an excellent standard. The home enjoys bright and well-balanced living space throughout. The accommodation includes a well-proportioned reception room opening onto a balcony, a fully integrated kitchen, a generous double bedroom with fitted wardrobes, and a stylish newly installed bathroom. The property is offered to the market with a long lease and no onward chain.

Clarence Avenue is ideally situated for the many local boutique shops, restaurants and bars of Abbeville Village, and the green open spaces of Clapham Common. Clapham Common & Clapham South stations are just a short walk away.

### Features

- Large Reception Room
- Modern Kitchen
- Double Bedroom
- Bathroom
- Balcony
- Long Lease

# Wharncliffe Mews, London, SW4



Total area (approx.): 49.6 sq m (533.8 sq. ft)