



Price
£310,000

Freehold

2x  1x  1x 

**Charlesworth Drive,
Waterlooville,
Hampshire, PO7**

OVER 60?

Secure this property
for up to **59% less!**

cubitt & west
Helping you move forwards



Main features

- Spacious and extended property
- Situated in the ever popular Berg Estate
- Sunny aspect rear garden
- Close to local shops and amenities
- Offered with no forward chain

Accommodation

GROUND FLOOR

Entrance Hall

Kitchen: 11'1" x 9'3" (3.38m x 2.82m)

Dining Area: 21'5" x 7'1" (6.53m x 2.16m)

Lounge: 15'9" x 11'3" (4.80m x 3.43m)

Bedroom 1: 13'5" x 11'3" (4.09m x 3.43m)

Bedroom 2: 9'9" x 9'5" (2.97m x 2.87m)

Shower Room

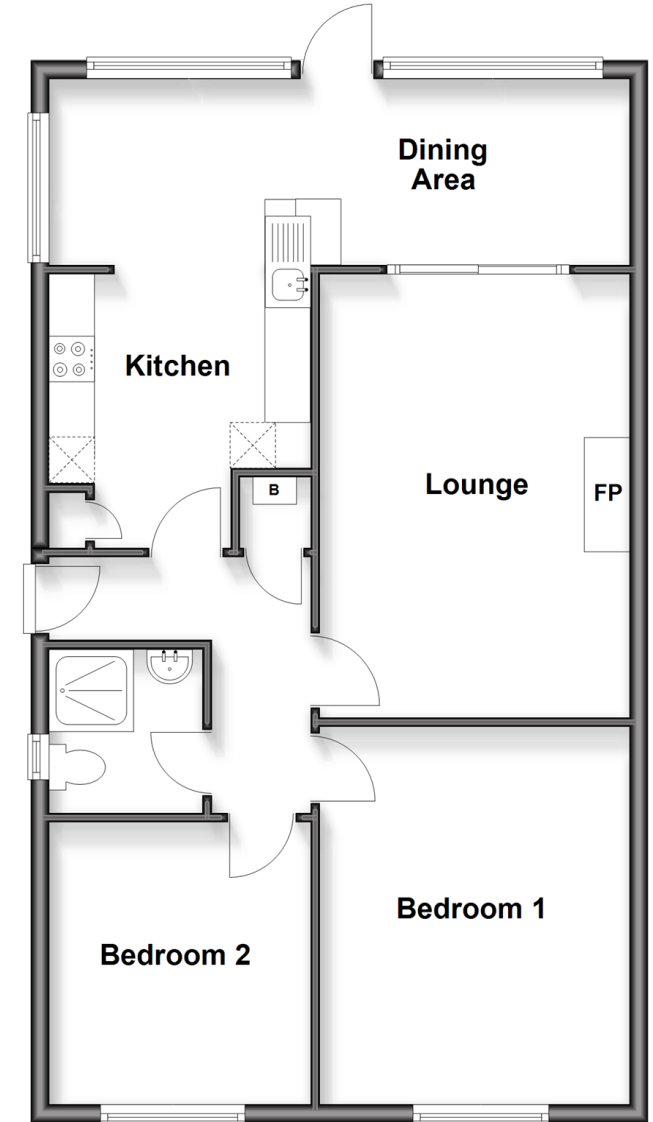
OUTSIDE

Front and Rear Gardens

Off Road Parking

Ground Floor

Approx. 71.9 sq. metres (773.7 sq. feet)



Call Waterlooille - 02392 267244 ■ cubittandwest.co.uk

- Legal advice should be taken to verify fixtures/fittings, planning, alterations and/or lease details
- Appliances & services are untested, dimensions are approximate and floor plans are not to scale
- Through a Homewise Home For Life Plan people aged 60+ can secure this property for up to 59% less, by purchasing a Lifetime Lease



42411023/20260310/EH/EC