

The
BINGHAM'S MELCOMBE
Estate

NR DORCHESTER | DORSET





'A beautifully situated residential sporting estate in an idyllic setting'



The BINGHAM'S MELCOMBE *Estate*

NR DORCHESTER, DORSET

*Dorchester 11 miles | Sherborne 16 miles (Waterloo 2 1/4 hours) | Shaftesbury 17 miles | Bournemouth Airport 28 miles | Blandford Forum 11 miles
(All distances and times are approximate)*

*A beautifully situated country estate with an impressive Grade I listed manor house,
a Dower house and two cottages, surrounded by outstanding historic gardens.*

Bingham's Melcombe: Reception hall | Drawing room | Sitting room | Dining room | Kitchen/breakfast room
Gallery/museum | Games room | 9 bedrooms | 6 bathrooms

Outbuildings: Thatched stable building | Garage block with workshops over | Listed Dovecote | Greenhouses | Potting sheds

Gardens and Grounds: Walled kitchen garden | Tennis court | Historic topiaried gardens | Parkland | River frontage

The Dower House: Hall | Kitchen | 3 reception rooms | 4 bedrooms | Bathroom (currently used as offices
Old Sunday School House) | Coach House building

No.1 Garden Cottage: 3 bedrooms | Bathroom | Kitchen | Living room | Dining room

No.2 Garden Cottage: 3 bedrooms | Bathroom | Kitchen | Dining room | Utility room

Commercial arable land, pasture and woodland with an excellent family shoot

For sale as a whole | In all about 370.57 acres



Viewing by appointment only.

These particulars are intended only as a guide and must not be relied upon as statements of fact. Your attention is drawn to the Important Notice on the last page of the brochure.

HISTORICAL NOTE

Bingham's Melcombe Manor House, located in the parish of Melcombe Horsey, has a rich history dating back to the medieval period.

The property takes its name from Robert Bingham, who acquired it in the 13th century through marriage with Lucy, the daughter and heiress of Sir Robert Turberville. The house remained in the Bingham family's possession for over six hundred years until 1895.

One of its most notable owners was Sir Francis Bingham, a prominent politician during the Tudor era and a Member of Parliament in the court of Queen Elizabeth I. His political influence allowed him to further develop and enhance the property.

The manor is constructed around an irregular courtyard and features various architectural styles from different periods. The Gatehouse, which serves as the entrance to the courtyard, is thought to have been built in the early 14th century, and it remains one of the earliest complete surviving parts of the house.



Throughout the years, various wings and ranges were added to the manor, resulting in an informal and picturesque grouping of buildings. The oriel in the Hall, with its elaborate Renaissance Italianate style, is considered a remarkable architectural feature, attributed to a regional group of mason-sculptors.

In the mid-20th century, the gardens of Bingham's Melcombe were restored by Sir Geoffrey Jellicoe, a renowned landscape architect whose contribution to landscape design was highly regarded.

Despite the occasional confusion in names and references to neighbouring settlements, Bingham's Melcombe has maintained its historical significance and remains an outstanding example of a medieval manor house with later architectural additions. The property has been in the same family ownership for over 40 years.



SITUATION

Bingham Melcombe occupies its own hamlet, the only other building in the cluster of dwellings being the Church, one mile from the slightly larger village of Melcombe Bingham. The estate is surrounded by open farmland which forms an impressive backdrop on all sides.

The A354 is 6 miles to the south giving access to the A31 and A35 and Sherborne is 16 miles to the north with trains to Waterloo in 2.25 hours. Bournemouth Airport is a 45 minute drive.

For immediate needs, there is a good convenience store in Ansty (1 mile) while more comprehensive amenities can be found in Blandford, Dorchester or Sherborne.

The area offers a good selection of Prep Schools, such as Hanford, Bryanston Prep, formerly Knighton House, Sandroyd and Sherborne with Public Schools, Bryanston, Canford, Milton Abbey and Sherborne boys and girls also close by.



BINGHAM'S MELCOMBE

The house has been in the same family for two generations and is a warm, welcoming family home with enormous charm and historical pedigree. It is undoubtedly one of Dorset's finest, undiscovered and untouched treasures.

The house is approached over a dramatic entrance drive through the remarkable 14th Century Gate House, which serves as an entrance to the courtyard, and is one of the earliest complete surviving

parts of the house. The reception hall, believed to be medieval, was extensively remodelled in the 18th century with the addition of an oriel and an arda stone stair. The interiors also boast a mix of 17th and 18th Century panelling, elaborate chimney pieces and original fireplaces. Notably, the sitting room features a mid 18th Century chimneypiece with Adam and Eve figures and the east wing contains an early 18th Century marble chimneypiece.



GROUND FLOOR

From the grand reception hall, which enjoys access to a small walled garden of its own, there is a lovely panelled drawing room, and stairs lead up to the games room on the first floor. A beautiful, light sitting room with high ceilings has doors out to the west lawn. A garden hall has stone spiral steps to the first floor. A cloistered corridor leads to the dining room and adjacent kitchen/breakfast room.



FIRST FLOOR

In the main part of the house there are 5 bedrooms and 4 bathrooms (all ensuite), the fifth being a single bedroom with a WC and wash basin across the landing.

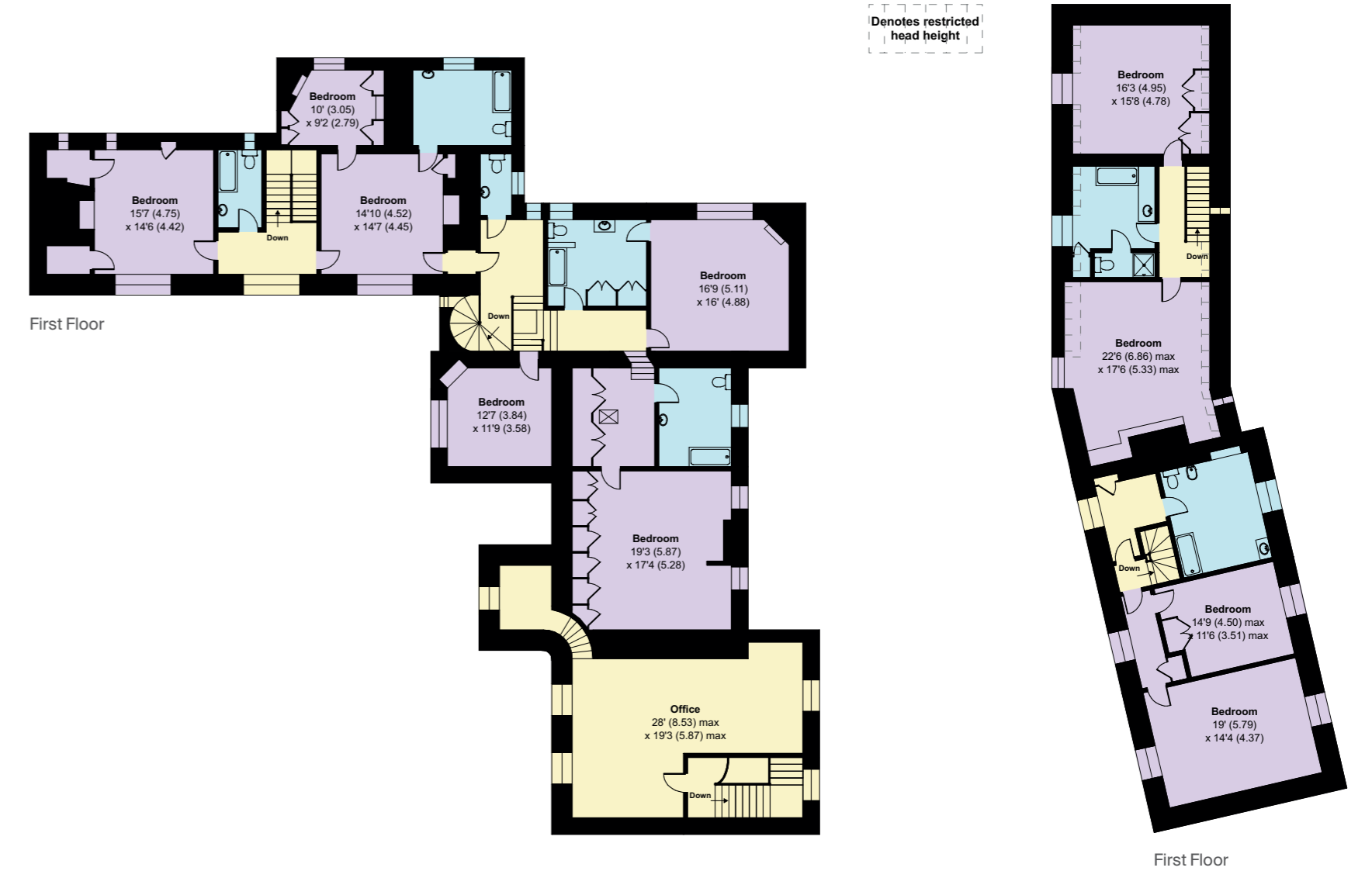
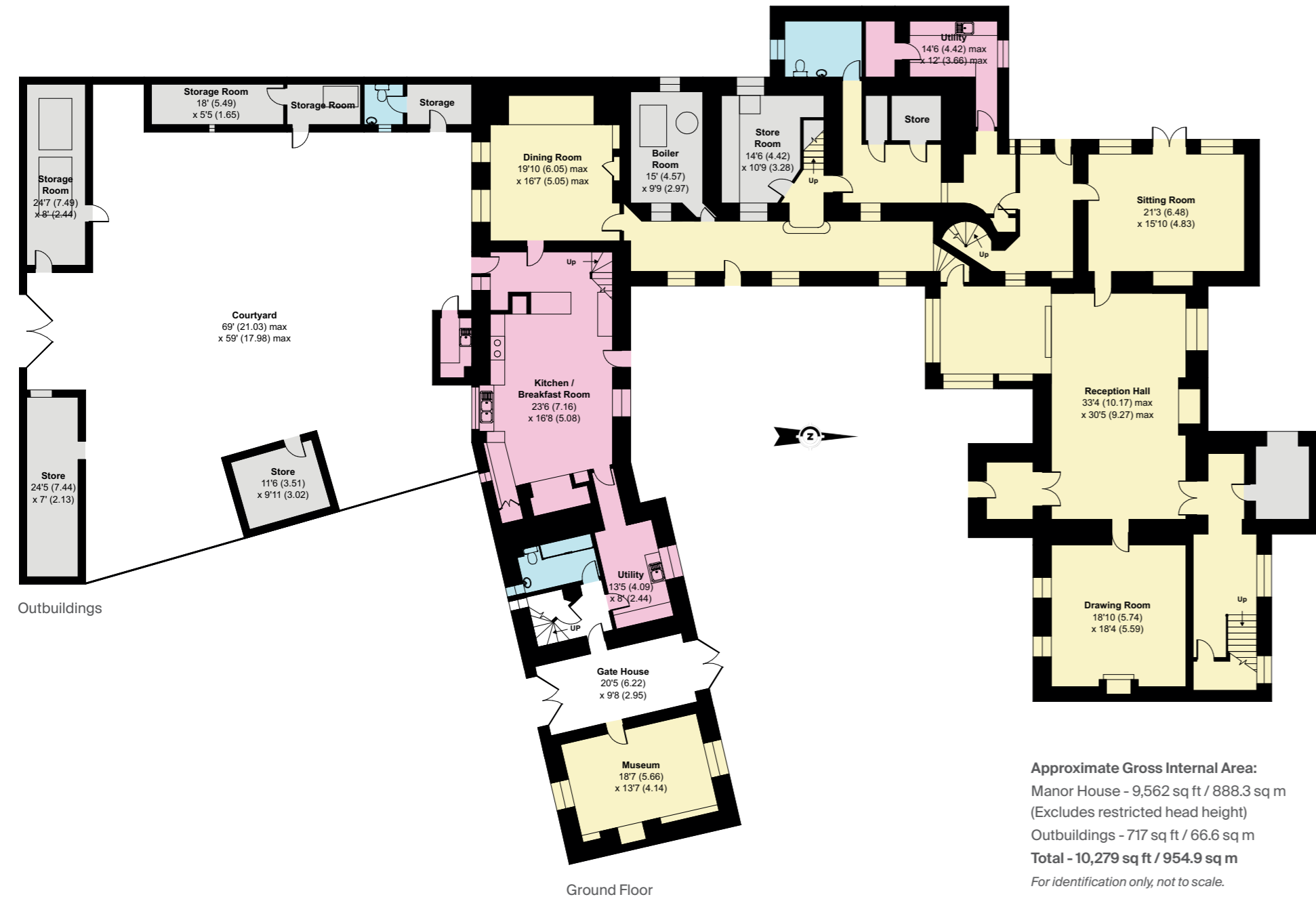
In the south wing, and approached through the Gate House by two separate staircases, are 4 further bedrooms and 2 further bathrooms.







MANOR HOUSE FLOOR PLAN



OUTBUILDINGS

To the south is a courtyard with a range of stores.

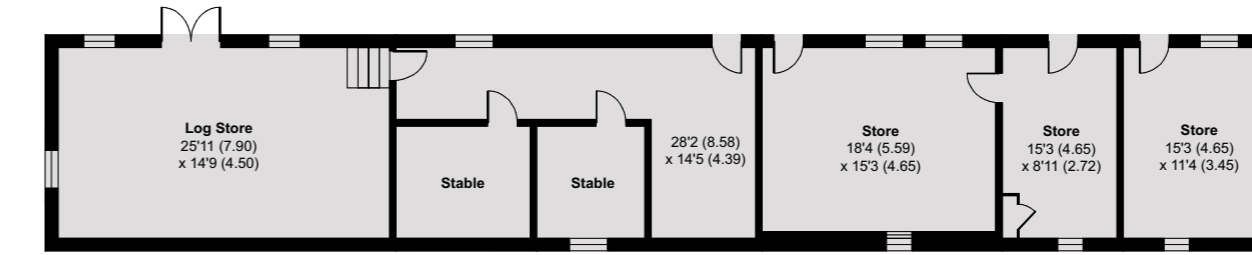
STABLE BLOCK

To the east is a substantial thatched 17th century Grade II listed stable building with tack room, 2 loose boxes, stores and loft.

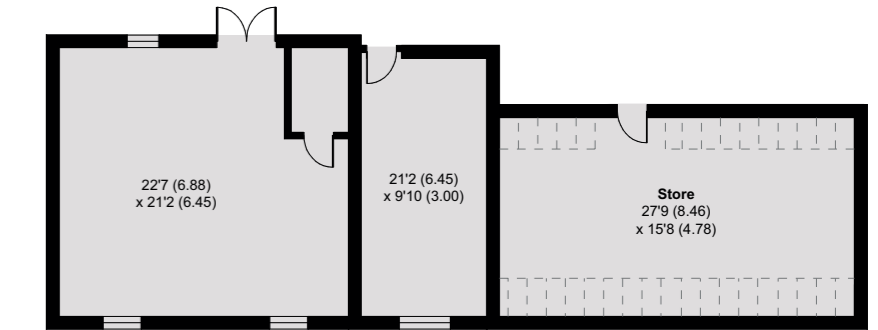
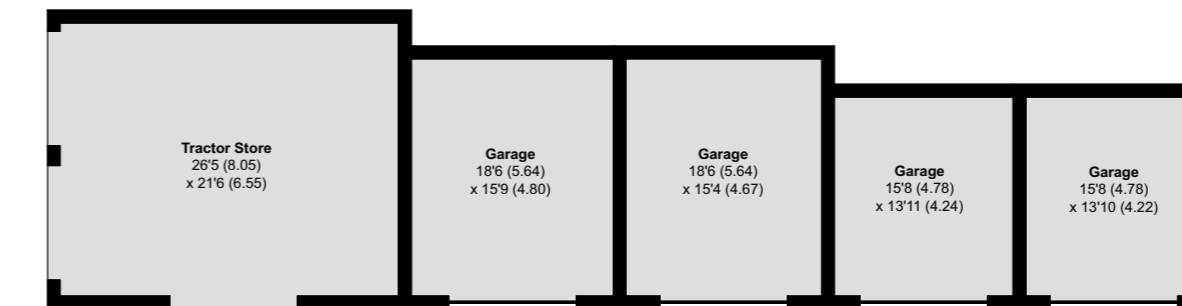
GARAGE BLOCK

Between the Stable Block and Dower House is a large red brick garage building with 2 open fronted stores, garaging for up to 8 cars and a workshop and storage above.

OUTBUILDINGS FLOOR PLAN



Approximate Gross Internal Area:
 Stable Block - 1,414 sq ft / 131.3 sq m
 Garage Block - 2,649 sq ft / 246 sq m
 Limited Use Area - 239 sq ft / 22.2 sq m
 For identification only, not to scale.



GARDENS AND GROUNDS

The gardens are largely attributed, in their present form, to Sir Geoffrey Jellicoe, who laid them out after the Second World War for Lord Southborough. They are mostly laid out to the north and west of the house, with further areas of informal pleasure grounds in the valley of the Devil's Brook to the east. The formal gardens are laid out in a series of terraces, the lowest terrace comprising the kitchen garden, bordered by neat gravelled paths, and with 2 greenhouses and a potting shed.

The middle lawn, also accessed by a stone flagged terrace by the west front, is the Bowling Green, a level rectangular lawn bordered to the north by a huge mature yew hedge and a mid 18th century Grade II listed brick wall which also encloses the south and west side of the

kitchen garden. The upper terrace is divided into discrete garden areas with a summer house, tennis court and Grade II listed, 17th century dovecote. To the north of the house is a charming knot garden and a romantic summer house within a high stone wall.

A broad grass walk beyond the west garden wall leads to a lime avenue underplanted with rhododendrons to reach a mid 18th century Grade II listed stone bridge which crosses the Devil's Brook. Nearby is a cascade with a small stone mill (listed Grade II). The floor of the nearby valley is laid out with formal water gardens comprising three pools linked by a narrow channel and planted with specimen trees to a 20th century scheme by Brenda Colvin.









*‘Surrounded by historic gardens,
parkland and open farmland.’*

PARKLAND AND FARMLAND

The estate enjoys a diverse landscape with approximately 174 acres of arable, approximately 105 acres of pasture and downland along with approximately 75 acres of mixed and largely mature woodland over the estate. The land is currently farmed in hand.

The estate lies in beautiful undulating Dorset countryside with some significant topography in places which lends itself perfectly for the family shoot that is run in conjunction with a neighbouring landowner. This arrangement could be allowed to continue although the estate is capable of supporting an enjoyable shoot in its own right utilising its own steep valley and dramatic woodland banks. To the west of the house, at the top of the farmland is a wonderful old traditional barn in a dramatic position with far reaching views over the estate and down to the house.



THE DOWER HOUSE

Approached over the main drive, and set in beautiful gardens overlooking the Devil's Brook, the Grade II listed Dower House, formally the Old Rectory for the Church next door, is a wonderful house in its own right. Of stone and flint under a tile roof with stone mullion windows and leaded lights, the house comprises on the ground floor 3 reception rooms, a cloakroom WC, kitchen and boiler room; on the first floor 3 bedrooms and the second floor a further bedroom, bathroom and attic storage.

The Dower House is currently used as offices and will require modernisation and the relevant planning consents to be returned to a private residence.

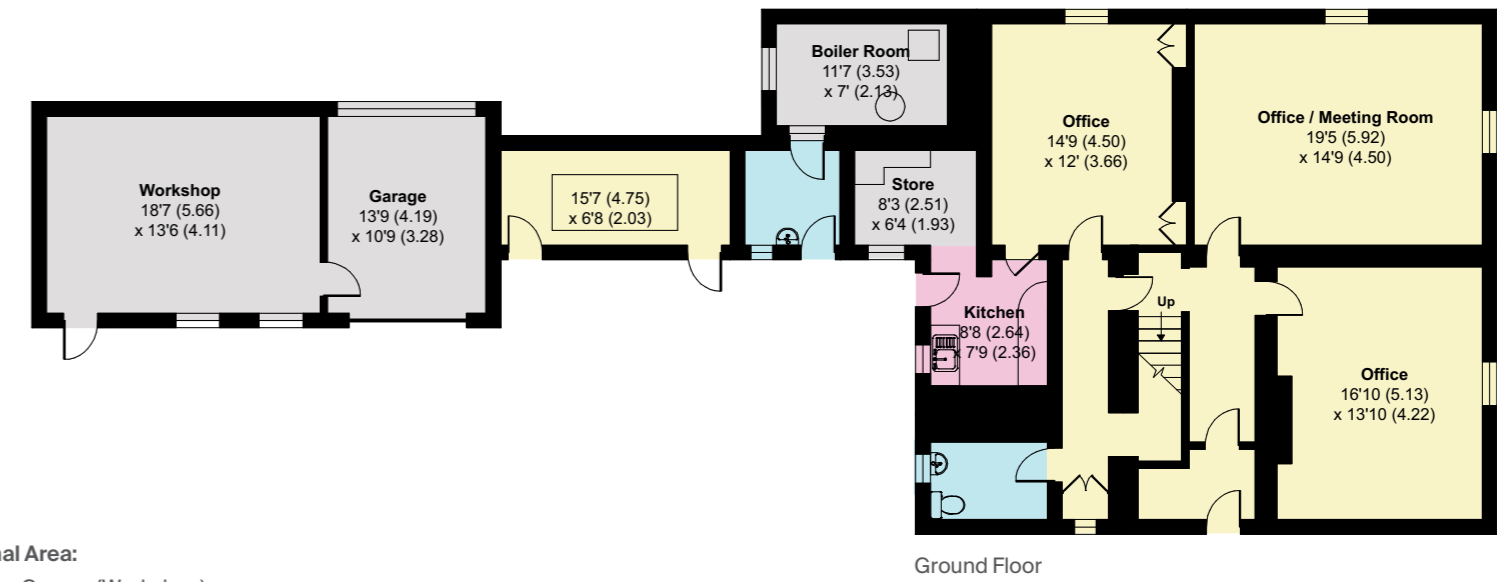
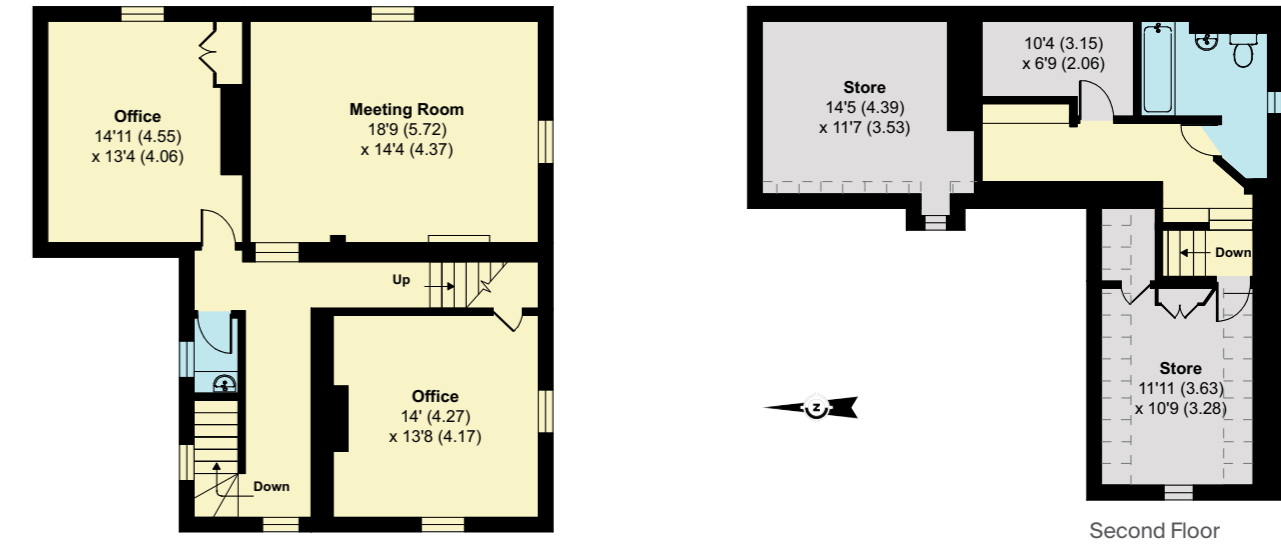
Linked to the house are outbuildings and a charming Coach House with garage bay and former stables, and provide enormous potential for incorporation into the ground floor living area subject to the usual planning and listed consents.

To the east of the Church is The Old School Room, a traditional single-storey building.





THE DOWER HOUSE FLOOR PLAN



Approximate Gross Internal Area:
 The Dower House (including Garage/Workshop) -
 3,445 sq ft / 320 sq m
 For identification only, not to scale.

THE COTTAGES

With access over the farm drive to the west are a pair of semi-detached cottages of rendered construction under slate.

No.1 Garden Cottage: 3 bedrooms, bathroom, kitchen, living room and a small dining room.

No.2 Garden Cottage: 3 bedrooms, bathroom, dining room and utility room.



GENERAL REMARKS & STIPULATIONS

TENURE & POSSESSION:

The Manor and The Dower House are offered with vacant possession on completion.

Depending on the date of completion, the farmland is sold with vacant possession. Tenant right may be chargeable in addition, or holdover agreed until after harvest.

No 1 Garden Cottage: Vacant upon completion.

No 2 Garden Cottage: Occupied under a service occupancy agreement.

SERVICES

- Water is by private borehole serving the whole estate, but can be switched over to the mains if required.
- Electricity is mains
- Internet is fibre to the premises by Wessex Internet.
- Sewerage is private.
- Oil central heating to The Manor which has been relatively newly installed.

PLANNING

Bingham's Melcombe is Grade I listed.

The Dower House, Gate piers, dovecote, old mill, garden walls are listed Grade II.

The Park is listed Grade II* on the parks and gardens register due to its scientific interest.

LOCAL AUTHORITY

Dorset Council
www.dorsetcouncil.gov.uk

WAYLEAVES, EASEMENTS & RIGHTS OF WAY

The estate is sold subject to all such rights of way and easements which may exist. A public footpath runs broadly east to west through the estate and other public footpaths are shown on the sale plan. A right of way to the Church exists over the main drive, together with associated parking rights. Access to the church is permitted for church services and for anyone visiting graves by car during the day.

FIXTURES & FITTINGS

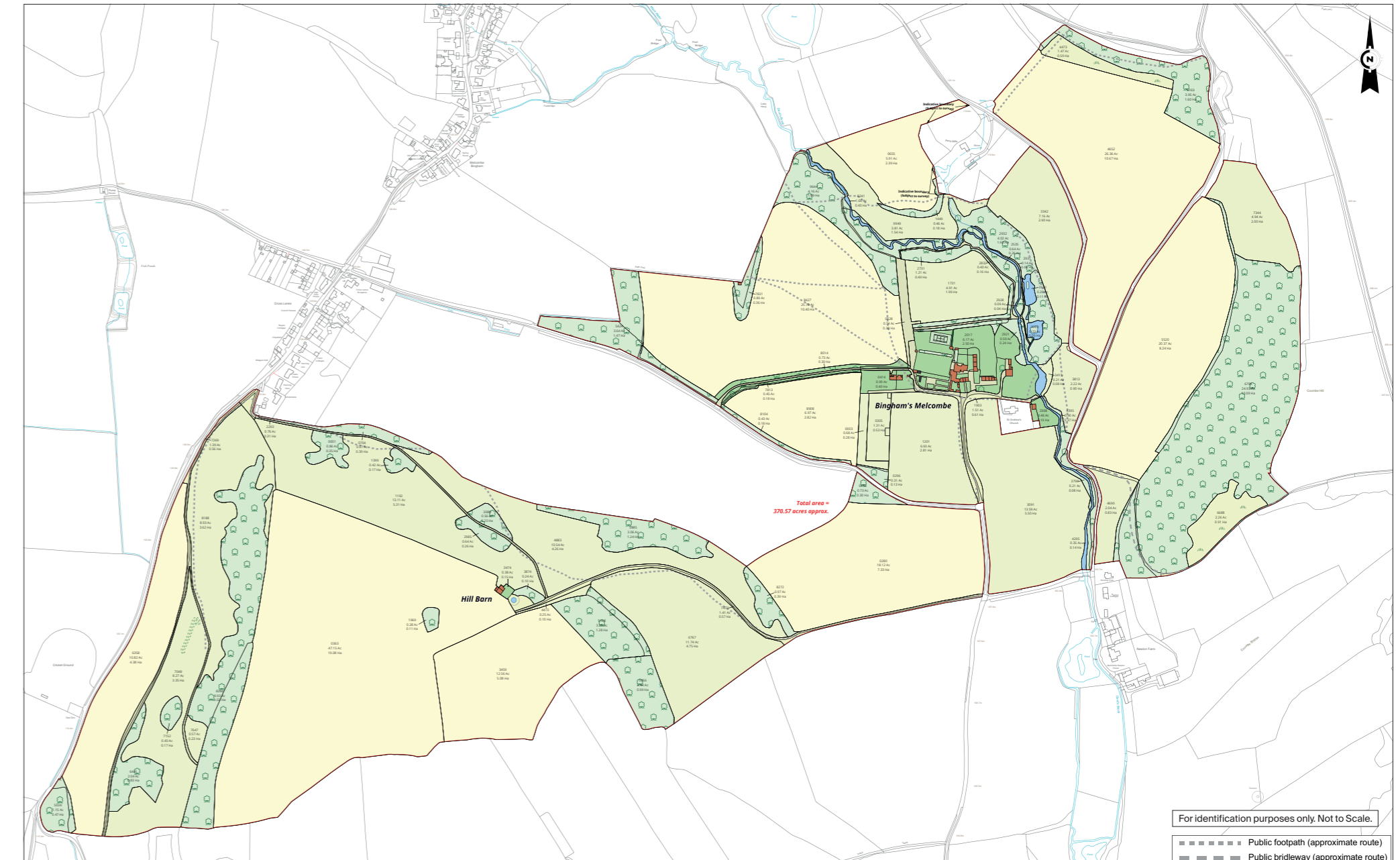
Only those mentioned in the sales particulars are included within the sale. All other items such as rugs, curtains, light fittings and garden ornaments, together with garden machinery and estate equipment are specifically excluded but some may be made available by separate negotiations.

DIRECTIONS

What3Words: ///zones.emptyed.sofas
 From the A31, take the A35 at Bere Regis and at the junction with the A354 on the outskirts of Puddletown, take the slip road signed to Milbourne St Andrew crossing back over the A35. Take the first left and after 200m, the first right into Long Lane. Follow signs to Dewlish and proceed through the village. After about 4 km the entrance gates are on the right.



ESTATE PLAN



For identification purposes only. Not to Scale.
 - - - - - Public footpath (approximate route)
 - - - - - Public bridleway (approximate route)



CONTACT INFORMATION

Viewing strictly by appointment only. Please contact the selling agents:

Knight Frank Country Department
55 Baker Street
London
W1U 8AN

James Crawford
+44 (0) 20 7861 1065
james.crawford@knightfrank.com

Will Matthews
+44 (0) 20 7861 1440
will.matthews@knightfrank.com

Knight Frank Sherborne
5 Hound Street
Sherborne
DT9 3AB

Simon Barker
+44 (0) 1935 810 064
simon.barker@knightfrank.com

Savills Country Department
33 Margaret Street
London
W1G 0LD

James Toogood
+44 (0) 20 7016 3822
james.toogood@savills.com

Savills Wimborne
Wessex House
Priors Walk, East Borough
Wimborne BH21 1PB

Ashley Rawlings
+44 (0) 1202 856 873
ashley.rawlings@savills.com

Savills Winchester
1 Jewry Street
Winchester
Hampshire SO23 8RZ

Geoffrey Jones
+44 (0) 1962 857 441
geoffrey.jones@savills.com



www.knightfrank.com



www.savills.co.uk

IMPORTANT NOTICE: 1. Particulars: These particulars are not an offer or contract, nor part of one. You should not rely on statements by Knight Frank LLP nor any joint agent in the particulars or by word of mouth or in writing ("information") as being factually accurate about the property, its condition or its value. Neither Knight Frank LLP nor any joint agent has any authority to make any representations about the property, and accordingly any information given is entirely without responsibility on the part of the agents, seller(s) or lessor(s). 2. Photos etc: The photographs show only certain parts of the property as they appeared at the time they were taken. Areas, measurements and distances given are approximate only. 3. Regulations etc: Any reference to alterations to, or use of, any part of the property does not mean that any necessary planning, building regulations or other consent has been obtained. A buyer or lessee must find out by inspection or in other ways that these matters have been properly dealt with and that all information is correct. 4. VAT: The VAT position relating to the property may change without notice. 5. To find out how we process Personal Data, please refer to our Group Privacy Statement and other notices at <https://www.knightfrank.com/legals/privacy-statement>. Particulars dated April 2026. Photographs dated August 2023. Knight Frank is the trading name of Knight Frank LLP. Knight Frank LLP is a limited liability partnership registered in England and Wales with registered number OC305934. Our registered office is at 55 Baker Street, London W1U 8AN where you may look at a list of members' names. If we use the term 'partner' when referring to one of our representatives, that person will either be a member, employee, worker or consultant of Knight Frank LLP and not a partner in a partnership. If you do not want us to contact you further about our services then please contact us by either calling 020 3544 0692, email to marketing.help@knightfrank.com or post to our UK Residential Marketing Manager at our registered office (above) providing your name and address.

© Designed & produced by Bespoke Brochures | bespokebrochures.co

