



Senior Street, W2

£475,000

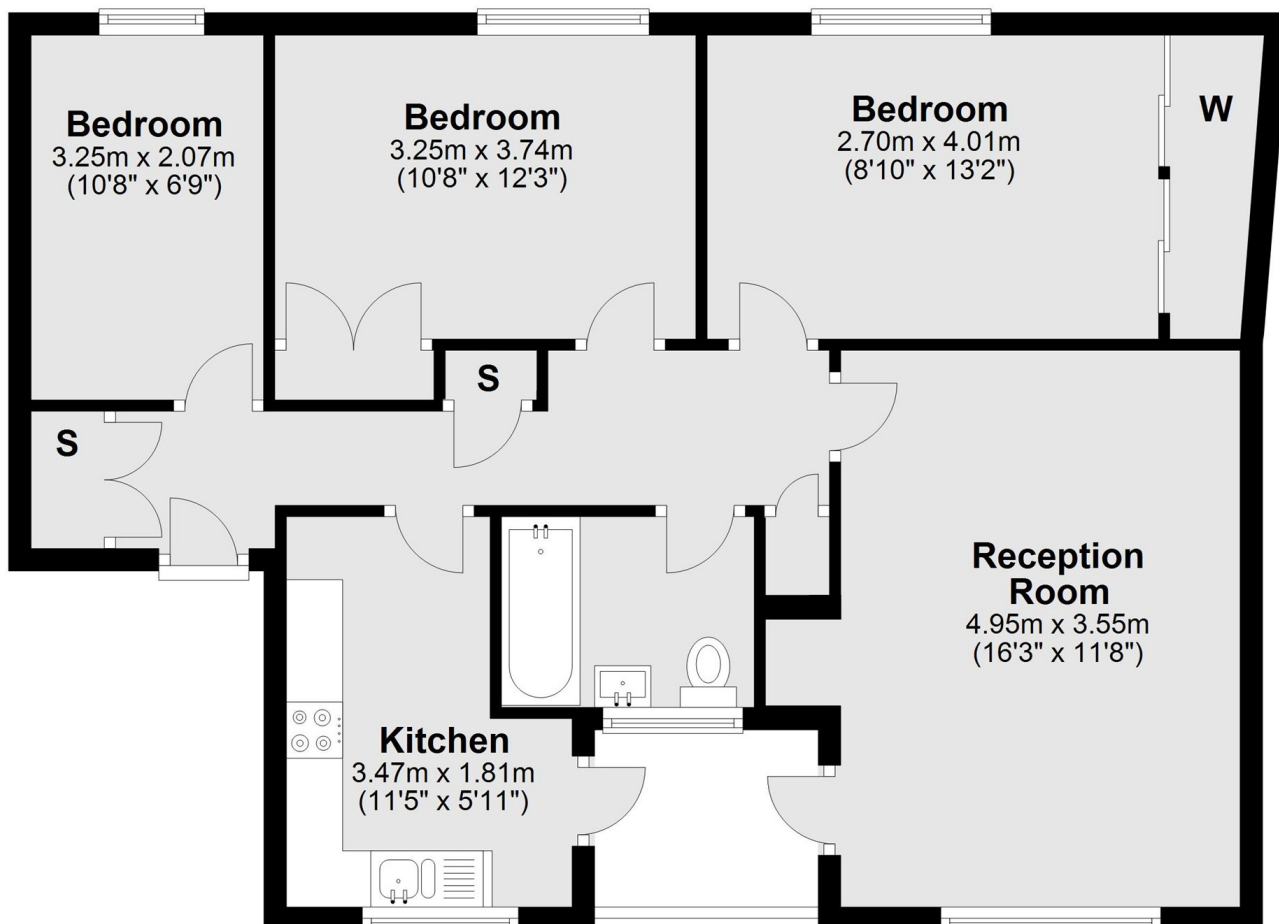
A three double bedroom apartment on the top floor of a purpose built block. The property has a large reception with wooden flooring, fitted kitchen, and access to a private balcony.

Located close to the shops, bars and restaurants of Little Venice and Maida Vale, short walk to both Warwick Avenue (Bakerloo Line) and Royal Oak underground Station (Hammersmith and City Line), and within easy reach of A40/M40.

Features

- Three Double Bedroom
- Wooden Flooring
- Separate Kitchen
- Balcony
- Communal Gardens
- Built In Storage

Senior Street, London, W2



Third Floor

Total area: approx. 72.2 sq. metres (777.0 sq. feet)