



65 Aspire Place Shetland Road, Basingstoke - RG24 9WH

£75,000 Leasehold

Available Shared Ownership 50% • 1 Bedroom • Balcony • Residents Parking at Front & Rear • Pets Allowed • Lift Access • 110 Year Lease • Service charge £179.37 p/m • No Ground Rent • Rent £235.87 p/m

01256 321777

www.thepropertyexplorer.co.uk

the property
explorer

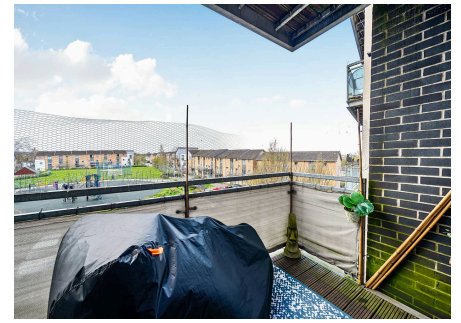
EXPLORER are pleased to present this spacious 1 double bedroom second floor apartment, situated within a secure and well-maintained development with lift access to all floors.

Council Tax band: B

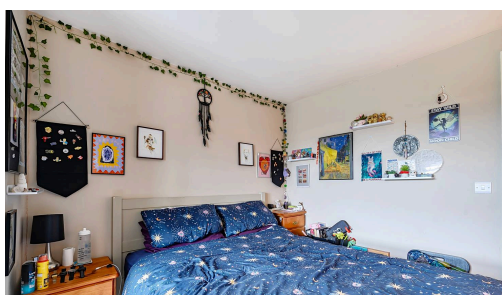
Tenure: Leasehold

EPC Energy Efficiency Rating: B

EPC Environmental Impact Rating: B



- Available Shared Ownership 50%
- 1 Bedroom
- Balcony
- Residents Parking at Front & Rear
- Pets Allowed
- Lift Access
- 110 Year Lease
- Service charge £179.37 p/m
- No Ground Rent
- Rent £235.87 p/m

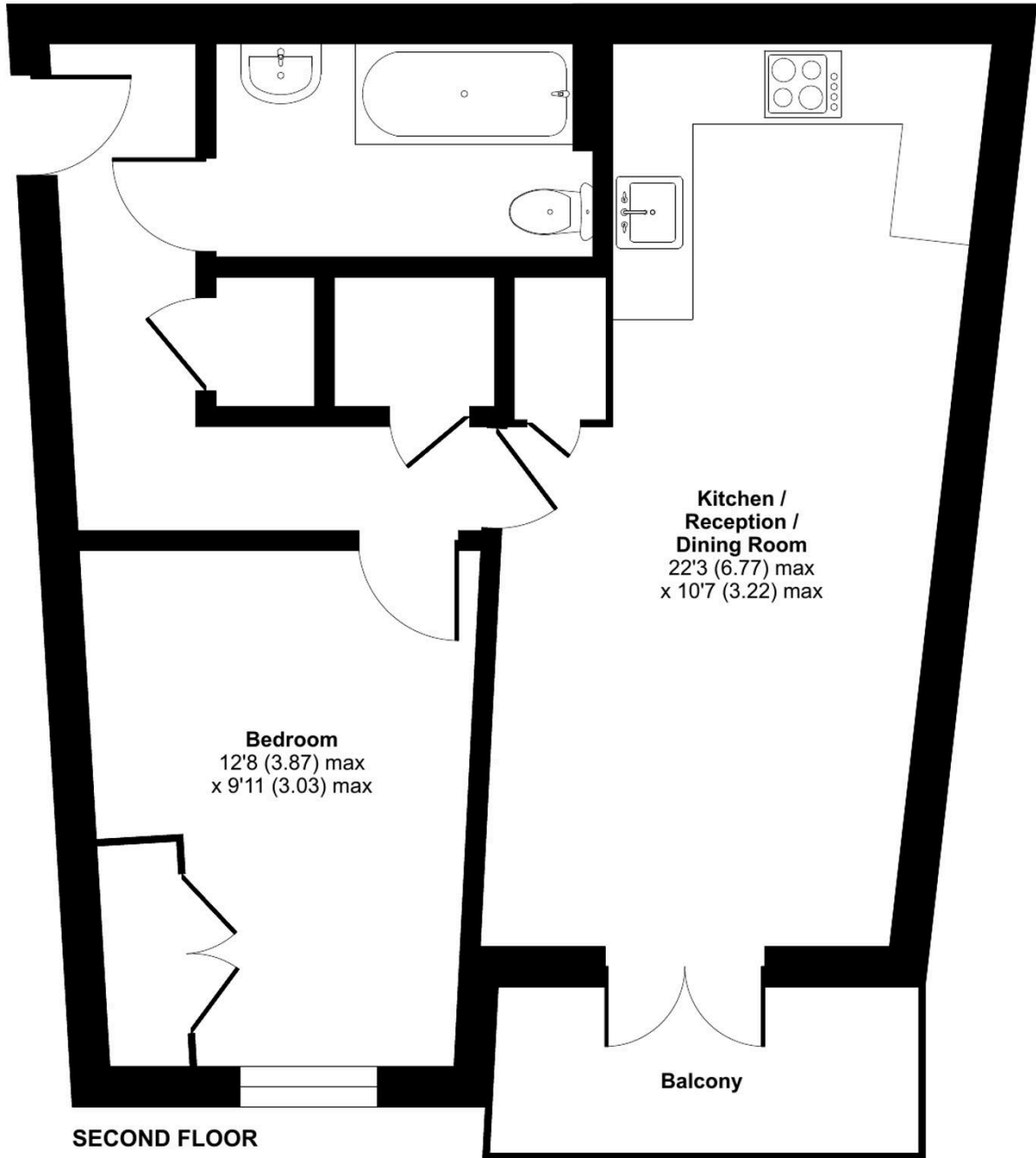




Shetland Road, Basingstoke, RG24

Approximate Area = 499 sq ft / 46.3 sq m

For identification only - Not to scale



Floor plan produced in accordance with RICS Property Measurement 2nd Edition, Incorporating International Property Measurement Standards (IPMS2 Residential). © nchecom 2026. Produced for Property Explorer. REF: 1434809

You can include any text here. The text can be modified upon generating your brochure.