



New Quebec Street, W1H

£645 Per week

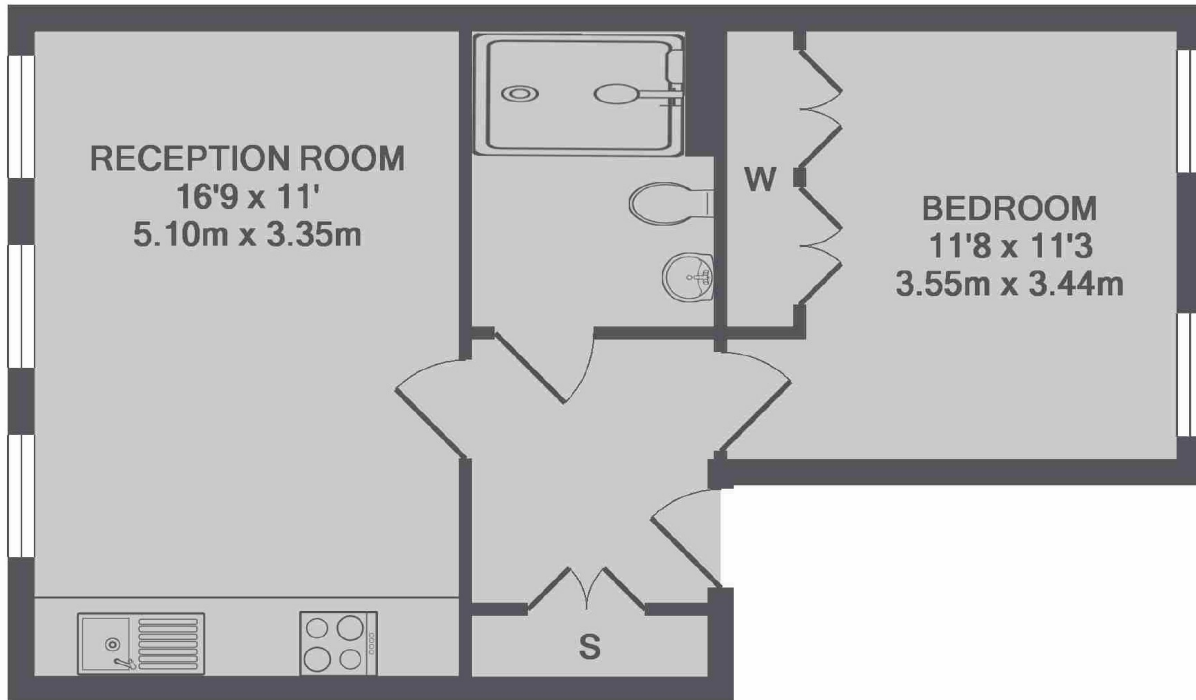
A modern apartment on the first floor of this attractive period building in the heart of Portman Village. The flat has an open-plan kitchen/reception room, double bedroom and bathroom.

New Quebec Street is in the heart of Portman Village which has some of the most vibrant and independent restaurants and boutique shops in London. Marble Arch and Bond Street stations are close by, as well as the open spaces of Hyde Park.

Features

First Floor Apartment
Kitchen/Reception
Double Bedroom
Bathroom
Unfurnished
The Portman Estate

New Quebec Street, London, W1H



TOTAL APPROX. FLOOR AREA 421 SQ.FT. (39.1 SQ.M.)
Made with Metropix ©2017