

# Apartment 19, £215,000

(Other charges apply)

RICHMOND  
VILLAGES

Part of Bupa



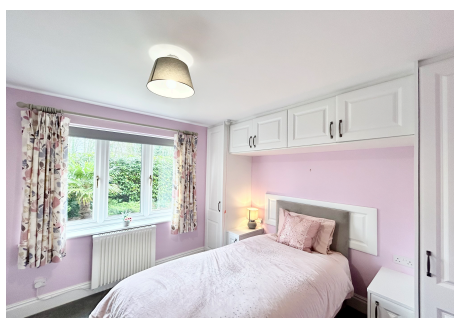
2



1



EPC - C



## 2 Bedroom Ground Floor Apartment

Nestled in the south west corner of the courtyard, this lovely two bedroom, ground floor property features French doors leading to a south-facing patio. The apartment is situated close to the main village centre and village facilities.

### Specification

- A bright south-facing living room with French Doors leading to an enclosed patio and communal garden area. Feature fireplace.
- Modern fitted kitchen with range of wall and base units and integrated appliances including fridge/freezer, washer/dryer, dishwasher and oven and hob.
- Main bedroom with south-facing aspect and fitted wardrobes.
- Second bedroom with courtyard views.
- Shower room with walk-in shower and fully fitted suite.
- Entrance hall with storage cupboards and airing cupboard.
- Well stocked flower borders and lawns maintained by the Village Gardeners.
- Allocated parking space for car owners.



Important Notice: These particulars are intended to give a fair and substantially correct overall description. Other fees and charges apply, please contact the Village Advisers for further details. Properties are sold on a 125 year lease and this property has 116 years remaining.

01270 629 080

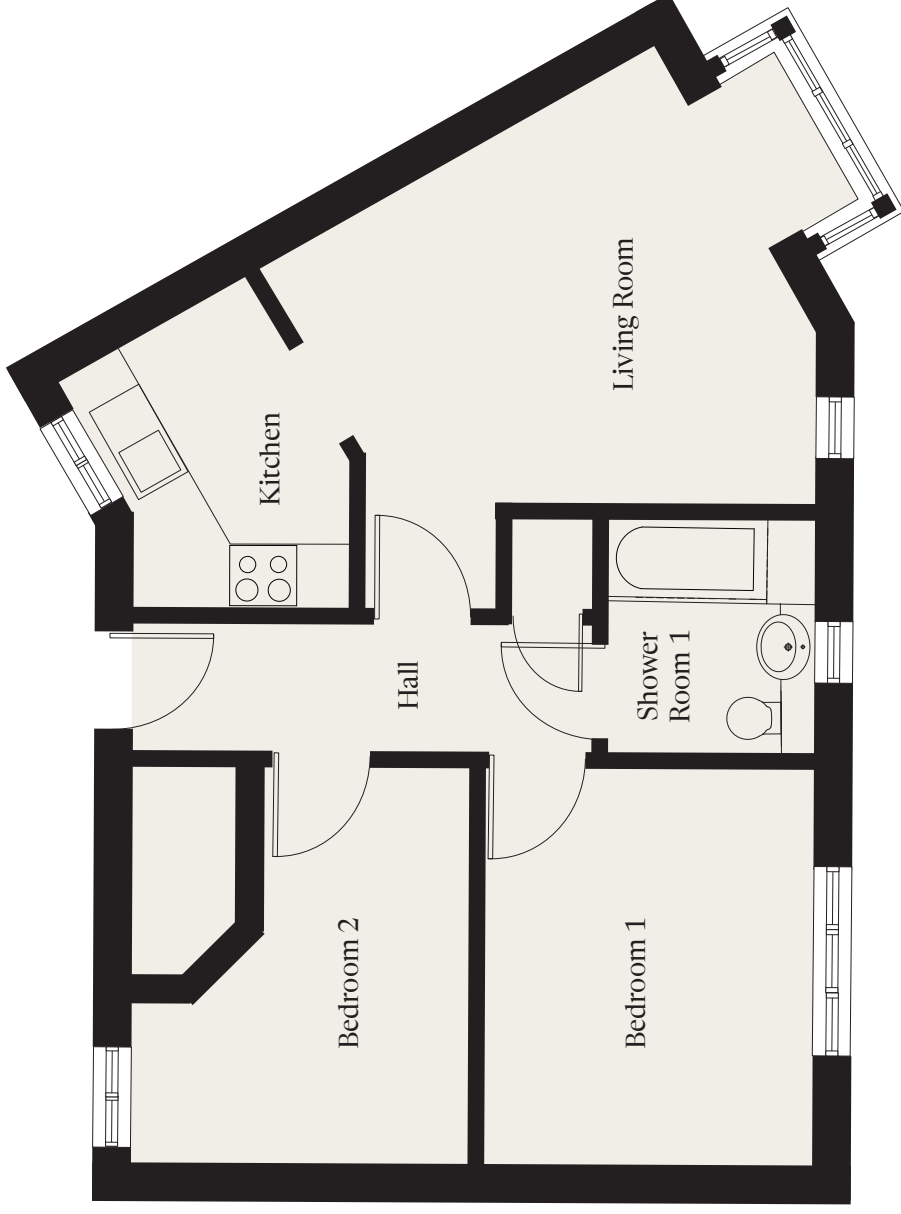
[nantwich@richmond-villages.com](mailto:nantwich@richmond-villages.com)

Richmond Villages Nantwich,  
St Joseph's Way, Nantwich, Cheshire CW5 6LZ

# Apartment 19

Ground Floor | 604ft<sup>2</sup>

<b>Kitchen</b>	2950mm x 2010mm 9'8" x 6'7"
<b>Living Room</b>	3840mm x 4140mm 12'7" x 13'7"
<b>Bedroom 1</b>	3050mm x 3660mm 10'10" x 12'0"
<b>Bedroom 2</b>	3050mm x 3660mm 10'10" x 12'0"
<b>Shower Room</b>	2110mm x 1700mm 6'11" x 5'7"



These particulars are intended to give a fair and substantially correct overall description. Measurements have been taken at 1500mm skimming height. All dimensions are approximate. Bedroom measurements include the wardrobe if applicable. Room measurements include bay windows if applicable. Furniture layout is to give an indicative impression. Although all efforts have been made to ensure its accuracy at time of print dimensions, fixtures, fittings, finishes and specifications are subject to change without notice. The properties are sold unfurnished.

