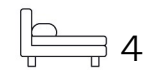




Living  
made  
better

South Molton Road  
Canning Town, E16 1PE



Asking Price £625,000

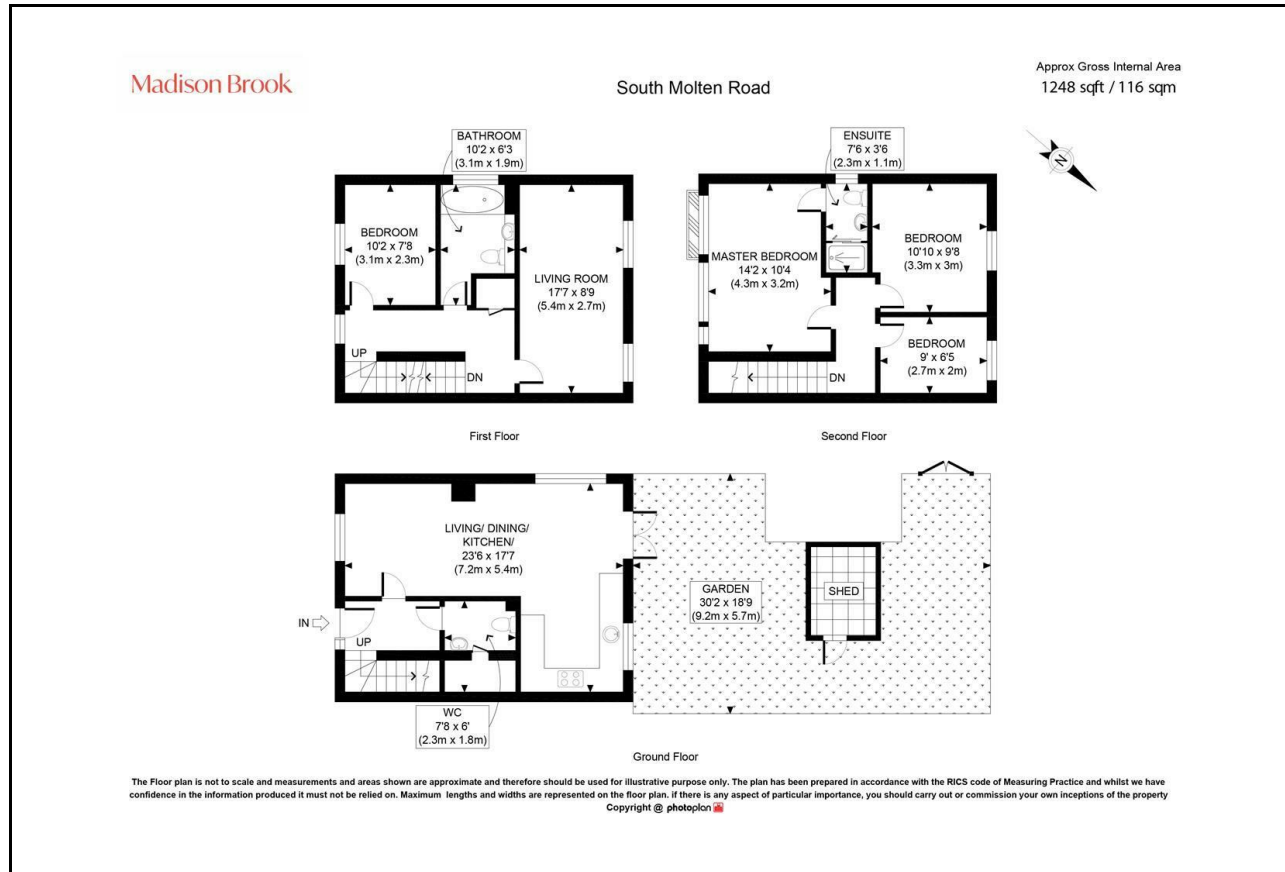
# South Molton Road, Canning Town, E16 1PE

Madison Brook

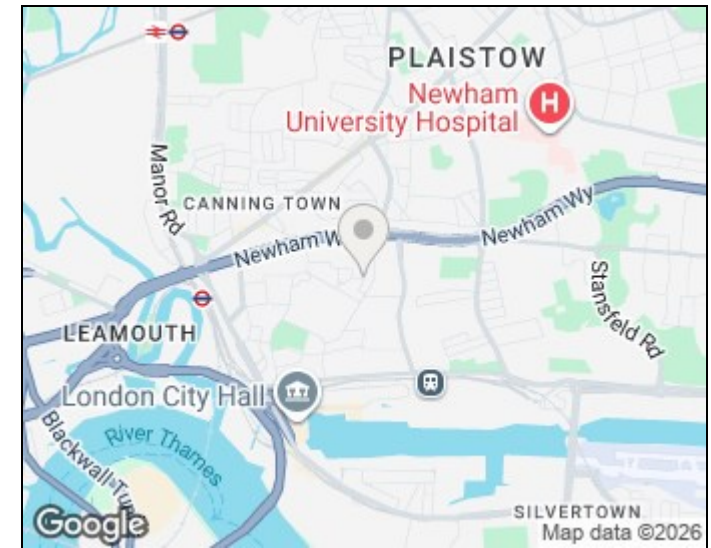
## Property Summary

A spacious and well-presented four bedroom townhouse arranged over three floors, offering approximately 1,248 sq.ft. of versatile living space. The property benefits from a large open-plan kitchen/living/dining area, a sizeable rear garden with outbuilding, and off-street parking. Ideally located close to Custom House Station (Crossrail) and a range of local amenities, making it perfect for families and commuters alike.

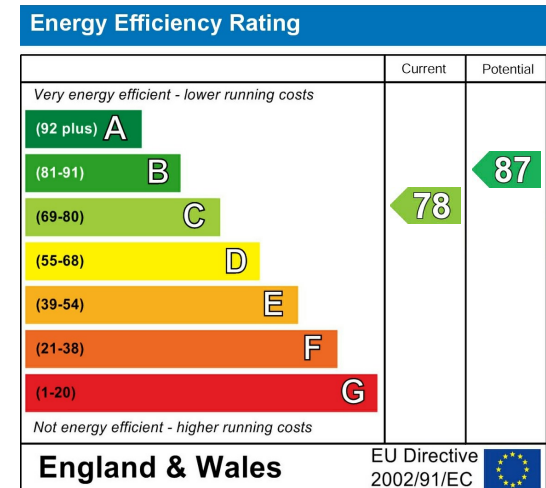
## Floorplan



## Area Map



## Energy Efficiency Graph



These particulars, whilst believed to be accurate are set out as a general outline only for guidance and do not constitute any part of an offer or contract. Intending purchasers should not rely on them as statements of representation of fact, but must satisfy themselves by inspection or otherwise as to their accuracy. No person in this firm's employment has the authority to make or give any representation or warranty in respect of the property.

Unit B 20 Western Gateway, Royal Victoria  
Dock, London, E16 1BS  
Tel: 020 3946 6000 Email:  
docklands@madisonbrook.com  
<https://madisonbrook.com/>