



Grosvenor Court

Rayners Road, SW15

Asking Price £500,000

First-floor two-bedroom apartment in central Putney filled with natural light and opening onto a sunny private balcony, offered chain free.

CHESTERTONS



Grosvenor Court

Rayners Road, SW15

- Two double bedrooms
- Built in storage
- Private balcony
- Garage
- Prime central Putney
- Chain free
- East Putney 0.3 miles
- Putney station 0.2 miles



Set on the first floor in the very heart of Putney, this well-presented two-bedroom apartment offers bright, well-proportioned accommodation with the added benefit of a garage and private balcony and a chain-free sale.

The spacious reception room is flooded with natural light, with sliding glass doors opening directly onto the balcony, ideal for relaxing, entertaining, or enjoying the sunshine. The separate kitchen provides ample storage and workspace, making it practical for everyday living.

Both bedrooms are generous in size and include built-in storage, while the bathroom is well-sized and complemented by a separate WC, adding practicality for sharers or guests.

The property further benefits from coming with a Share of Freehold and a lockable garage, located on the site.

Perfectly positioned for everything Putney has to offer, the property is moments from a fantastic range of shops, cafés and restaurants, with excellent transport links close by for easy commuting.

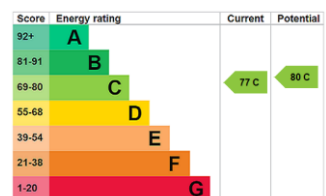
Tenure: Leasehold (Expiry: 24/06/2158) Plus Share of Freehold

Service Charge: £4,598.24 p.a.

Ground Rent: 50p p.a.

Local Authority: Wandsworth Council

Council Tax Band: E



Chestertons Putney Sales

153 Upper Richmond Road

London

SW15 2TX

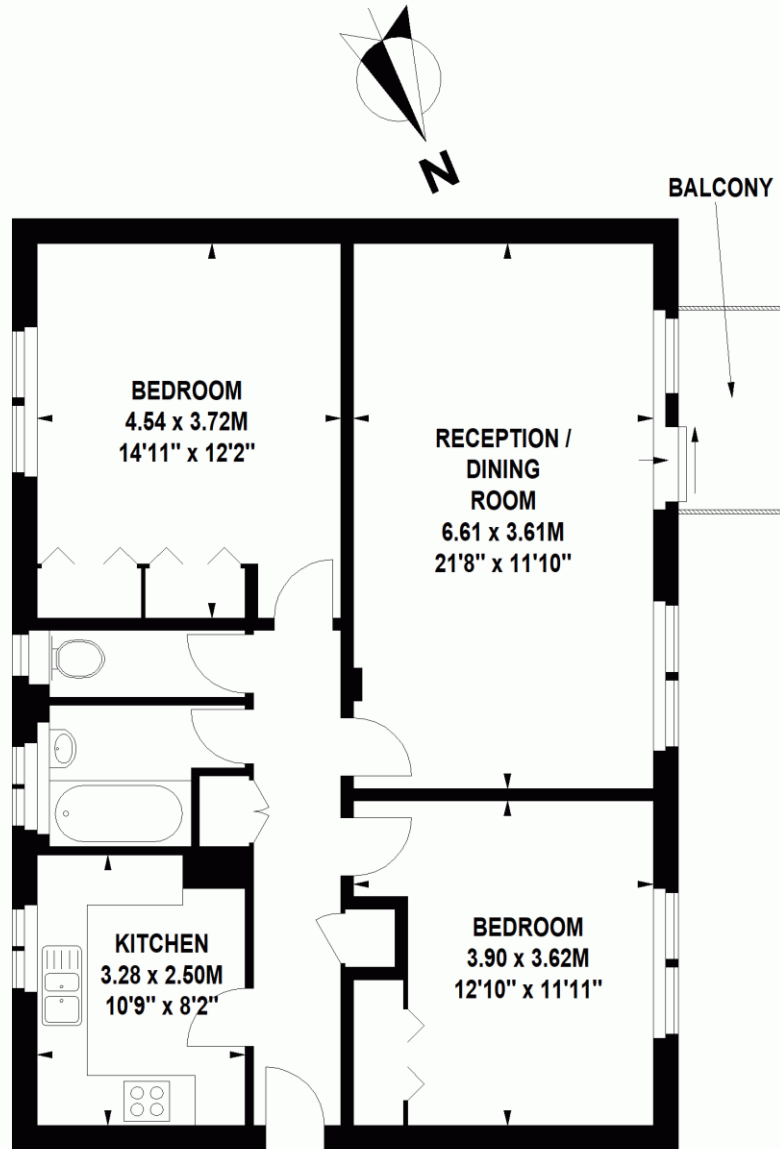
putney@chestertons.co.uk

020 8246 5959

chestertons.co.uk

Grosvenor Court, Rayners Road, SW15

Approximate Gross Internal Area 79 sq m / 850 sq ft



Floor Plan produced for Chestertons by Mays Property Marketing © . Tel 020 3397 4594

Illustration for identification purposes only. Not to scale.

Orientation, measurements, and other details are approximate and for guidance only, purchasers should verify details independently.

Where a room has a sloping ceiling the dotted line marks 1.50M height, and all measurements shown are at floor level.

