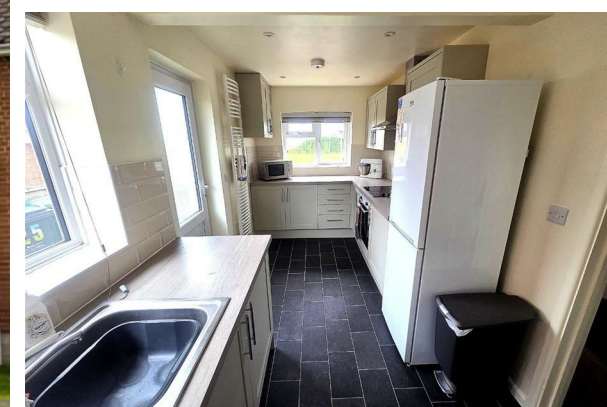




TO LET



25 Newleaze, Steeple Ashton, Trowbridge, BA14 6EF

£1,100 Per Month



- Available Now
- Two Bedrooms
- Village Location
- Pets Considered
- Enclosed Rear Garden

Location Overview – Steeple Ashton

Steeple Ashton is a highly attractive and historic village in Wiltshire, positioned approximately 3 miles east of Trowbridge and within easy reach of Bath. The village lies in a rural yet accessible setting, offering a balance between countryside living and access to larger commercial centres.

With a population of around 1,200, it provides a quiet, community-led environment characterised by traditional stone cottages, period homes and open farmland.

Surrounding Area & Lifestyle

The village sits within rolling Wiltshire countryside, known for its agricultural landscape, walking routes and scenic views.

THE PROPERTY

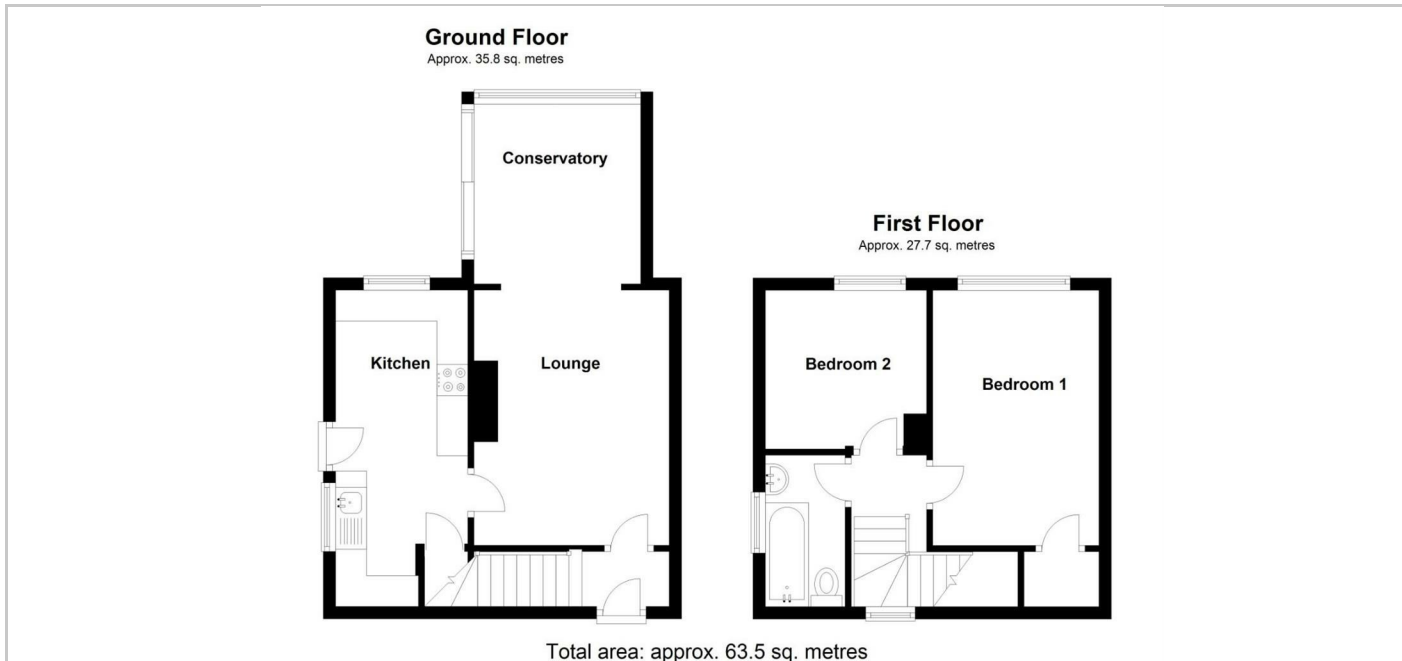
Welcome to Newleaze, Steeple Ashton. A two bedroom semi-detached property in a village location.

The ground floor accommodation comprises entrance hall, lounge, kitchen and conservatory. The first floor accommodation comprises landing, bathroom, and two bedrooms.

The property further benefits from an enclosed rear garden and electric heating.

Please note the property does not come with allocated parking but there are parking spaces to the front of the house which are used for the residents of the road.

The landlord would prefer a longer term let. Pets are considered.



SITUATION

Directions