



## Eastway, E9 £525,000

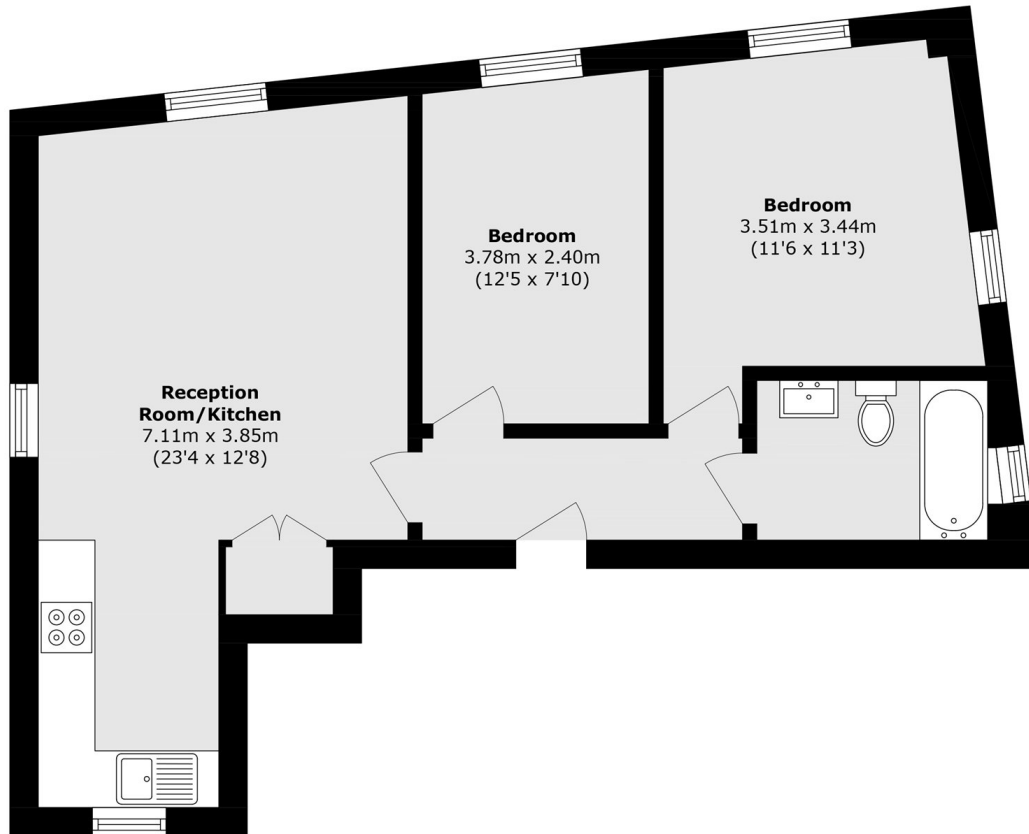
A two double bedroom apartment within a RIBA award winning development. Developed in 2013 by architects Matthew Lloyd, the property has been finished to a high standard with wooden floors, dual aspect, underfloor heating and modern finishes throughout. The floor to ceiling windows offer a great view over Hackney Wick and Canary Wharf. It has a long lease and being sold with no onward chain.

Vergers Apartments is located in and around the St Mary of Eton church buildings. The property is 500ft from Victoria Parks Molesworth Gate offering many opportunities for outdoor recreation including football & cricket as well as its weekend market. The many cafés, restaurants, shops and canal-side pubs by Hackney Wick Overground are within walking distance. Hackney Wick Overground is under half a mile away and Homerton Overground is half a mile away, both offering direct trains into the Stratford. Many bus routes are also on your doorstep.

### Features

- Two Double Bedrooms
- Top Floor
- Far Reaching Views
- Chain Free
- Communal Gardens
- Hackney Wick/Victoria Park

# Eastway, London, E9



Total area (approx.): 54.1 sq. m (582.3 sq. ft)