



Guilford Street

Bloomsbury, WC1N

Asking Price £675,000

A contemporary apartment set within a fully redeveloped Grade II listed townhouse. Located within one of London's main cultural neighbourhoods with world class museums, entertainment and retail on your doorstep.

CHESTERTONS



Guilford Street

Bloomsbury, WC1N

- Period charm with contemporary interior.
- Small development of Grade II listed townhouse
- Exceptional location in the heart of London
- World class retail, dining, entertainment and cultural offerings abound
- Near to prestigious campuses.
- Superb transport links



Completed in 2020 this stylish apartment is located in a small redevelopment of just five properties set within a handsome grade II listed Georgian townhouse. Positioned on the raised ground floor it offers grand ceiling heights and voluminous interior with elegant proportions and has benefitted from new windows, parquet flooring, lighting, pipework, boiler, kitchen and bathroom as well as insulation between apartments.

Perfectly placed, Guilford Street is located near a number of transport links, including Russell Square Underground Station (0.1 miles), Goodge Street Underground Station (0.4 miles), and Holborn Underground Station (0.4). The property sits within walking distance of a range of City hotspots, restaurants, and retail shops, such as the Brunswick Centre.

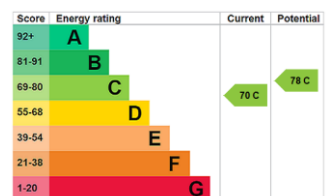
Tenure: Leasehold 987 years 7 months

Service Charge: £3200

Ground Rent: £0

Local Authority: London Borough Of Camden

Council Tax Band: F



Chestertons Covent Garden Sales

196 Shaftesbury Avenue

London

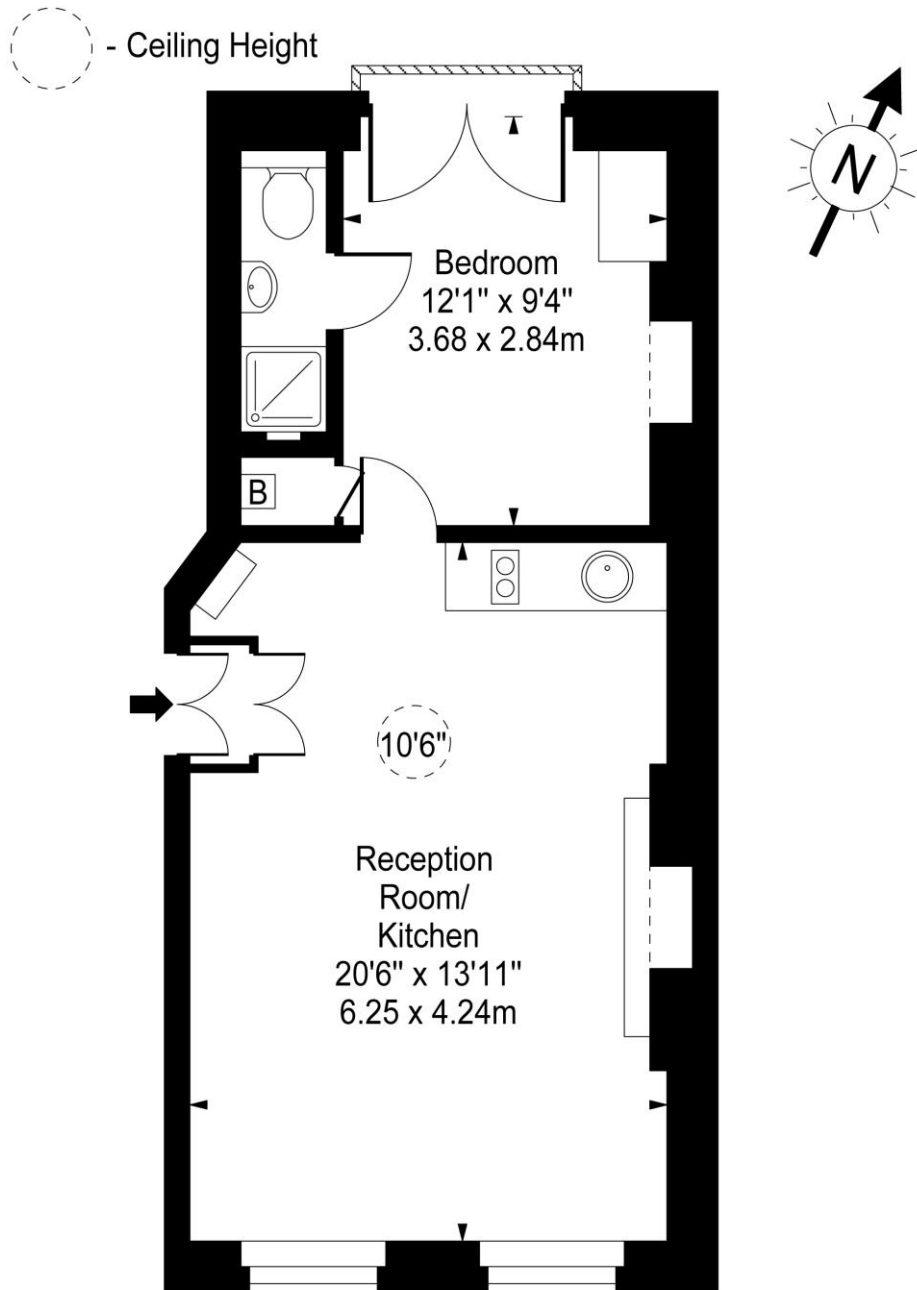
WC2H 8JF

coventgarden@chestertons.co.uk

020 3040 8300

chestertons.co.uk

Guilford Street



Ground Floor

Approx Gross Internal Area **435 Sq Ft - 40.41 Sq M**

For Illustration Purposes Only - Not To Scale

www.goldlens.co.uk

Ref. No. 010983J

