



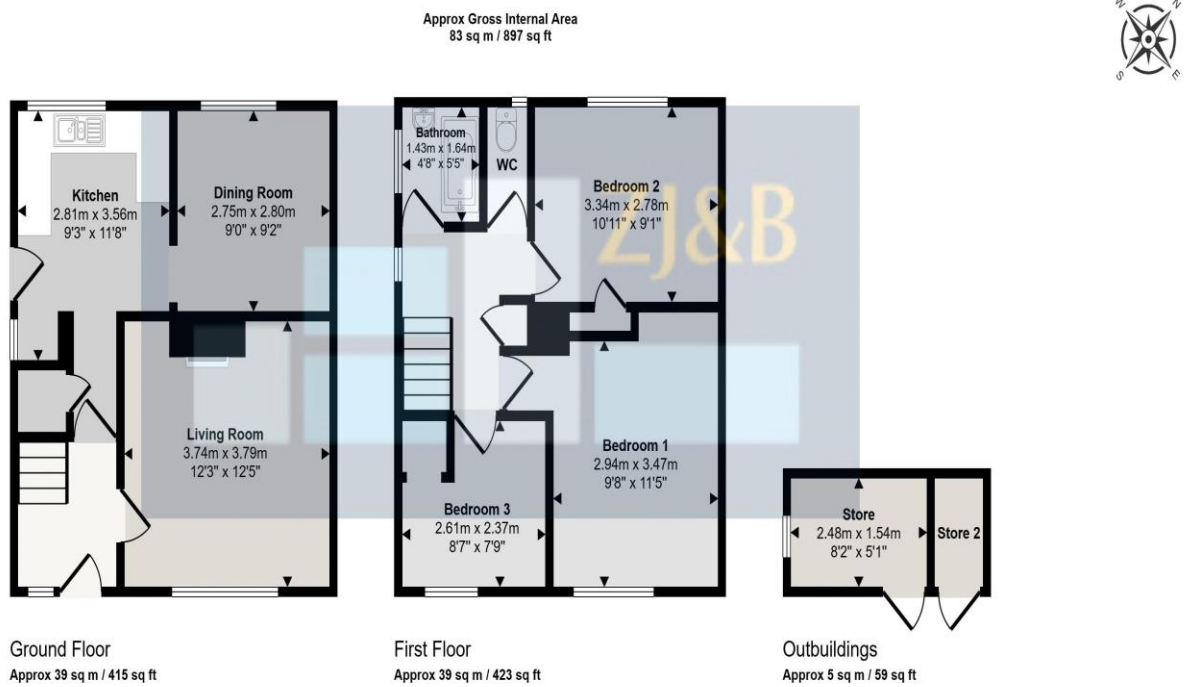
12 Chatford Drive, Meole, Shrewsbury, Shropshire, SY3 9PQ

£200,000

A well-proportioned three-bedroom semi-detached house offers excellent potential for buyers looking to create a home to their own taste.

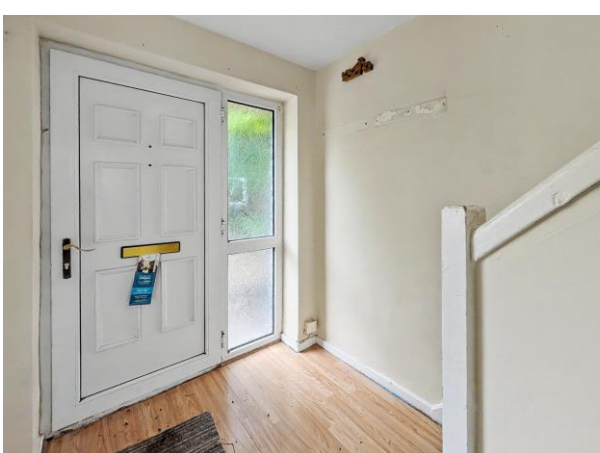


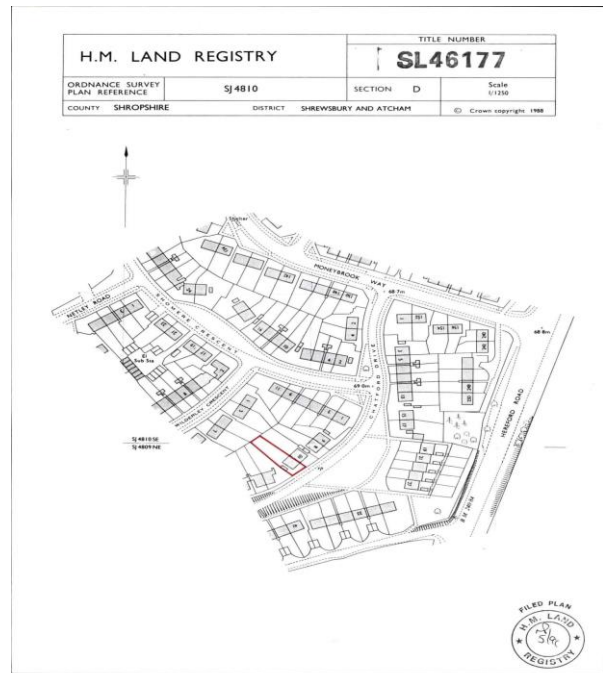
In need of general updating throughout, this well-proportioned three-bedroom semi-detached house offers excellent potential for buyers looking to create a home to their own taste. Occupying a popular position on the sought-after Meole Estate, the property is conveniently located close to the retail park, local amenities and provides easy access to the A5 and M54. The accommodation comprises an entrance hall, living room, kitchen and separate dining room to the ground floor. To the first floor are two double bedrooms, a single bedroom, a family bathroom and separate WC. Outside, the property benefits from front and rear gardens together with two useful external store rooms, providing excellent additional storage space. Offered to the market with no upward chain, this is a fantastic opportunity for first-time buyers, investors or those seeking a property with scope to improve and add value.



This floorplan is only for illustrative purposes and is not to scale. Measurements of rooms, doors, windows, and any items are approximate and no responsibility is taken for any error, omission or mis-statement. Icons of items such as bathroom suites are representations only and may not look like the real items. Made with Made Snappy 360.

FLOOR PLANS FOR GUIDANCE ONLY





This is a copy of the title plan on 17 JUN 2025 at 13:37:52. This copy does not take account of any application made after that time even if still pending in HM Land Registry when this copy was issued.

This copy is not an 'Official Copy' of the title plan. An official copy of the title plan is admissible in evidence in a court to the same extent as the original. A person is entitled to be indemnified by the registrar if he or she suffers loss by reason of a mistake in an official copy. If you want to obtain an official copy, the HM Land Registry web site explains how to do this.

HM Land Registry endeavours to maintain high quality and scale accuracy of title plan images. The quality and accuracy of any print will depend on your printer, your computer and its print settings. This plan shows the general position, not the exact line, of the boundaries. It may be subject to distortions in scale. Measurements taken from this plan may not match measurements taken on the same points on the ground.

This title is dealt with by HM Land Registry, Telford Office.

© Crown Copyright. Produced by HM Land Registry. Further reproduction in whole or in part is prohibited without the prior written permission of Ordnance Survey. Licence Number AC000051063.

Council Tax Band B

Tenure: Our client advises us that the property is Freehold. Should you proceed with the purchase of the property, these details must be verified by your solicitor.

NB: The mention of any appliances and/or services within these sales particulars does not imply that they are in full and efficient working order.

Viewing: To arrange a viewing call in at our office or telephone **01743 248351**

FREE MORTGAGE ADVICE

Whether you are a first-time buyer, moving home, buying as an investor or looking to save on your mortgage payments, you could benefit from some **free** no obligation mortgage advice.

Contact **Stephen Bath** of Bee Mortgages, who is based at our office

01743 248351

Whole of Market clear and relevant tailored to your individual needs and circumstances.

Your home may be repossessed if you do not keep up repayments on your mortgage