



BEST
ESTATE AGENT GUIDE
AWARDS 2024
EXCELLENT
SALES
PRINCIPAL PARTNER
OnTheMarket

**STOBART
& HURRELL**

WE BRING PEOPLE AND PROPERTY TOGETHER

Corner Cottage, Heath Road, Hempstead, Norfolk, NR12 0SH

Corner Cottage is a beautifully updated and extended home, perfectly positioned within a peaceful and picturesque setting in the hamlet of Hempstead, nestled between the village of Lessingham and the stunning North Norfolk coastline, renowned for its sandy beaches and abundant wildlife.

Surrounded by rolling countryside and rich in heritage, the nearby area features historic landmarks such as St Andrew's Church, alongside local amenities including a village hall and primary school. The property is also conveniently located just 0.8 miles from The Star Inn and approximately 1.8 miles from the award-winning The Ingham Swan.

Set back from the road, the home is approached via a shingle driveway providing ample off-road parking and access to two timber garages. The generous gardens, extending to over a third of an acre, wrap around the front, side, and rear of the property, bordered by mature hedging and trees that frame far-reaching countryside views and create a wonderfully private, rural setting.





STOBART
& HURRELL

- FOUR BEDROOMS
- DETACHED COUNTRY COTTAGE
- OFF-ROAD PARKING & TWO GARAGES

- PLOT EXCEEDING ONE THIRD OF AN ACRE
- VERSATILE & SPACIOUS ACCOMMODATION
- APPROX ONE MILE TO THE NORFOLK COASTLINE

- BEAUTIFUL COUNTRYSIDE VIEWS - TRANQUIL SETTING
- NESTLED IN A SMALL VILLAGE IN THE NORFOLK COUNTRYSIDE
- WELL-MAINTAINED WRAP-AROUND GARDEN & LARGE DRIVEWAY

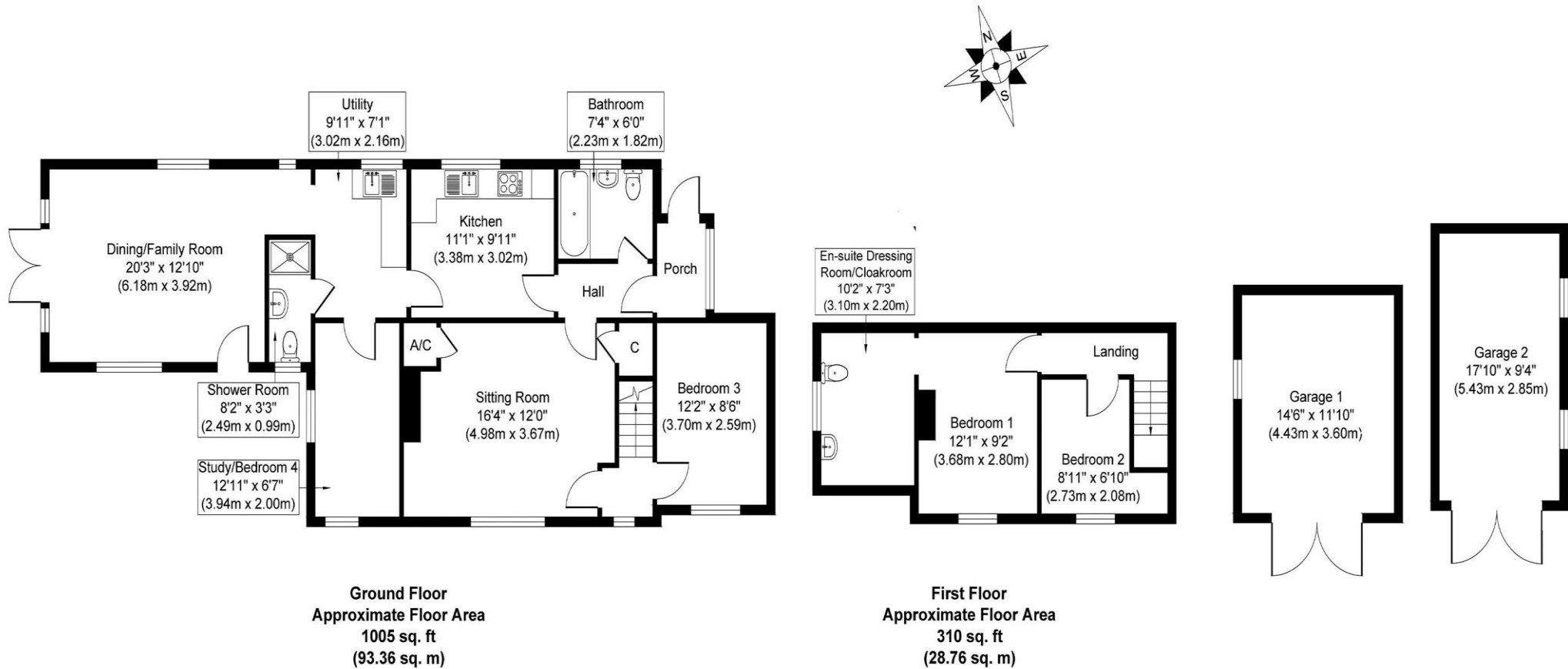
Internally, Corner Cottage has been thoughtfully modernised and extended to offer versatile accommodation suited to both family living and a tranquil country retreat. An enclosed porch opens into a welcoming hallway leading to a comfortable sitting room, a contemporary kitchen with separate utility, a ground-floor bathroom, and a versatile bedroom. The extension introduces a light-filled family dining room with double doors opening onto the garden, along with an additional bedroom or study and a further shower room. Upstairs, there are two further bedrooms, one benefiting from an en-suite cloakroom.

The location offers the best of both worlds, peaceful countryside living with excellent connectivity. The nearby town of Stalham provides a wider range of amenities, while the historic city of Norwich lies around twenty miles to the south. The waterways of the Norfolk Broads are also within easy reach at Hickling, Barton Turf, Wroxham, and Hoveton, making Corner Cottage an ideal base for enjoying both coast and countryside.





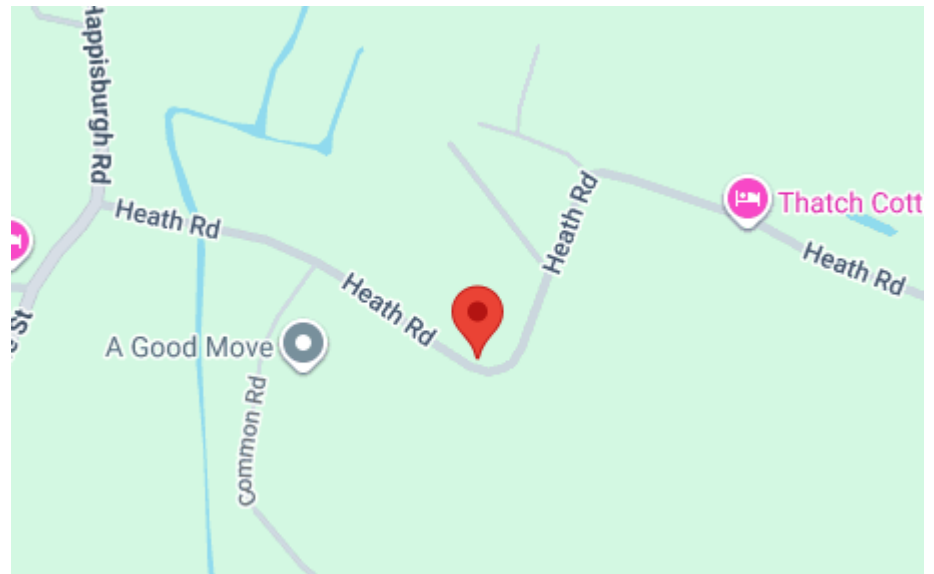
STOBART
& HURRELL



Whilst every attempt has been made to ensure the accuracy of the floor plan contained here, measurements of doors, windows, rooms and any other items are approximate and no responsibility is taken for any error, omission, or mis-statement. The measurements should not be relied upon for valuation, transaction and/or funding purposes. This plan is for illustrative purposes only and should be used as such by any prospective purchaser or tenant. The services, systems and appliances shown have not been tested and no guarantee as to their operability or efficiency can be given.



Score	Energy rating	Current	Potential
92+	A		95 A
81-91	B		
69-80	C		
55-68	D	56 D	
39-54	E		
21-38	F		
1-20	G		





Whether selling, buying or letting, there can be plenty to organise. Our range of services and our experience of the local market means we can help or recommend like-minded reputable firms to assist you with your move.

						
Sales	Property Auctions	Lettings	Property Management	Sale/ Rental Valuation	Estate Administration (Probate)	Land & New Homes
						
Second Home Service	Property Cleaning Service	Mortgages	Solicitors	Surveyors	Service Providers	



Come in and meet us, visit us on line or call and speak to one of the team to learn more.

Stobart & Hurrell

Unit 3A, Station Business Park, Horning Road West, Hoveton, Norfolk NR12 8QJ

www.stobarthurrell.co.uk

enquiries@stobarthurrell.co.uk

01603 782 782

