



## 2 Aldwick Place

Aldwick | West Sussex | PO21 4AD

**Price £555,000**

**Freehold**

# 2 Aldwick Place

Aldwick | West Sussex | PO21 4AD

SH555 - 05/26

## Features

- Contemporary Style Home
- Exclusive Private Estate Setting
- Close To Beach
- 4 Bedrooms 2 Bathrooms, 2 Reception Rooms
- Scope For Modernisation
- 1,788 Sq Ft / 166.1 Sq M (including garage and garden room)

**Current EPC Rating:** E (54)

**Private Estate Contribution:** £672.56 p.a (2026 - 2027)

**Council Tax:** Band F    £3,493.21 (Arun District Council/Aldwick 2026 - 2027)

Situated within an exclusive private estate, close to the beach, this two storey, contemporary style home offers well proportioned, light and airy accommodation.

Albeit the property could benefit from some remedial updating, the generous accommodation comprises entrance hall, ground floor cloakroom/wc, kitchen, separate dining room, generous sitting room, landing principal bedroom with en-suite bathroom and access to a roof terrace/balcony, three further bedrooms and a family bathroom.

The property also offers majority double glazing, a gas heating system via radiators, large carport style storm porch, attached over size garage with driveway and delightful landscaped Southerly rear garden.

A large carport style covered storm porch protects the double glazed front door with natural light flank double glazed panelling which opens into a welcoming light and airy entrance hall with deep, almost two storey, full height double glazed window to the front, with open tread feature original easy-rise staircase with handrail/balustrade and useful under-stair storage cupboard, along with exposed wood block flooring and built-in cloaks storage cupboard. Glazed double doors lead into the sitting room, while further doors lead to the kitchen, separate dining room and ground floor cloakroom with a low level wc, pedestal wash basin and high level obscure double glazed window to the rear.

The main sitting room has a double glazed sliding door with flank double glazed panels to the rear (with awning over) providing access into the Southerly rear garden, along with a natural light high level window to the front and fireplace with a raised hearth.

The separate dining room has a large double glazed picture window to the front and serving hatch to the kitchen which has a double glazed window to the rear, double glazed door to the side, fitted units and work surfaces, wall mounted gas boiler, space for a cooker, space and plumbing for a fridge freezer and breakfast bar.





The first floor landing has a built-in double airing cupboard housing the hot water cylinder, access hatch to the loft space, along with doors to the four bedrooms and family bathroom.

Bedroom 1 is a good size double room with a double glazed window to the rear, a double glazed door to the front providing access onto the generous sun terrace/balcony, along with fitted wardrobes and a further access hatch to a second roof space. A door leads into the adjoining en-suite bathroom with a suite of shaped bath with mixer tap/shower attachment, pedestal wash basin, close coupled wc, bidet and high level obscure double glazed window to the rear.

Bedroom 2 is a good size double room, positioned at the front, with a built-in double wardrobe. Bedroom 3 has previously been utilised as a home office/study with a double glazed window to the rear and a built-in double wardrobe, while bedroom 4 is positioned over the covered storm porch and has double glazed windows to both the front and side.

In addition, the first floor offers a family bathroom with a coloured suite of bath with wall mounted shower over and fitted shower screen, pedestal wash basin, close coupled wc and high level obscure double glazed window to the rear.

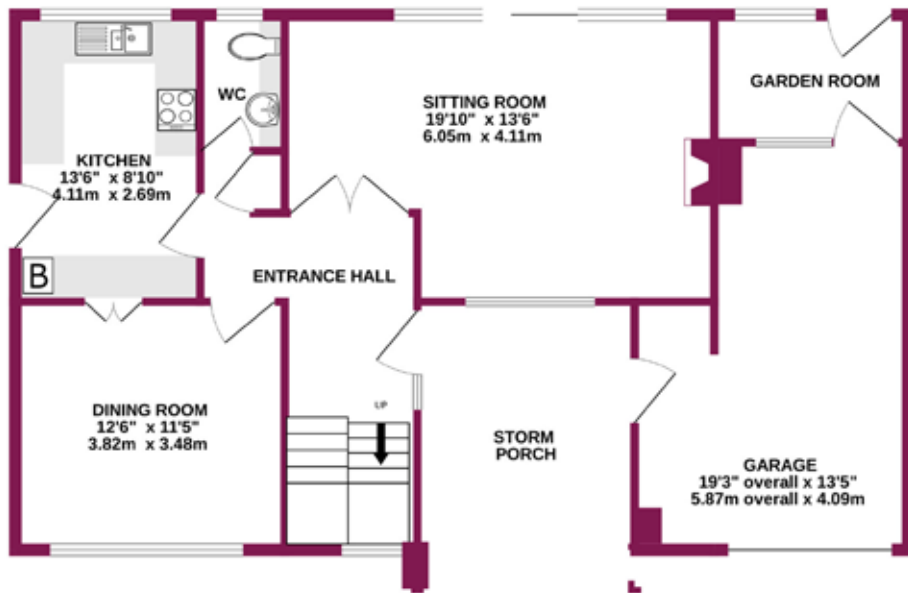
Externally, there is an open plan frontage, predominantly laid to lawn with mature shrubs and a paved driveway leading to the garage and carport style covered storm porch. The garage has an up and over door to the front and door to the side, along with a window and door at the rear, which leads into a useful adjoining garden room with double glazed door and double glazed window.

The Southerly rear garden is a real feature of this home having been landscaped to provide a shaped lawn with central circular bed with pond, established well stocked beds and borders and an array of established shrubs, along with a sun terrace, external tap and pathway to the side, with gate to the front.

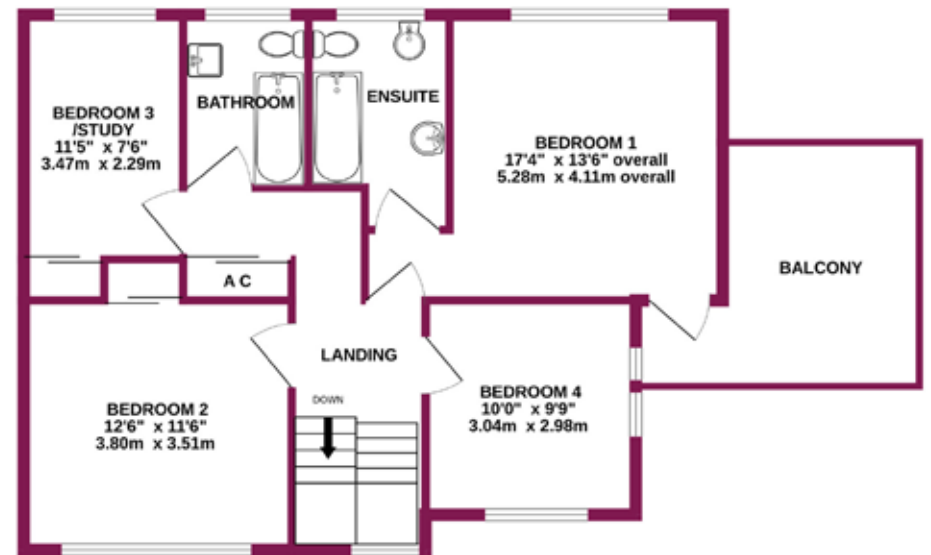
**N.B. - Residents can enjoy access to the nearby beach via a coded gate within the estate.**



**GROUND FLOOR**  
1042 sq.ft. (96.8 sq.m.) approx.



**1ST FLOOR**  
747 sq.ft. (69.4 sq.m.) approx.



**TOTAL FLOOR AREA : 1788 sq.ft. (166.1 sq.m.) approx.**

Whilst every attempt has been made to ensure the accuracy of the floorplan contained here, measurements of doors, windows, rooms and any other items are approximate and no responsibility is taken for any error, omission or mis-statement. This plan is for illustrative purposes only and should be used as such by any prospective purchaser. The services, systems and appliances shown have not been tested and no guarantee as to their operability or efficiency can be given.  
Made with Metropix ©2024





6 Coastguards Parade, Barrack Lane,  
Aldwick, West Sussex PO21 4DX  
T: 01243 267026 E: [office@coastguardsproperty.co.uk](mailto:office@coastguardsproperty.co.uk)  
[www.coastguardsproperty.co.uk](http://www.coastguardsproperty.co.uk)

IMPORTANT: we would like to inform prospective purchasers that these sales particulars have been prepared as a general guide only. A detailed survey has not been carried out, nor the services, appliances and fittings tested. Room sizes should not be relied upon for furnishing purposes and are approximate. If floor plans are included, they are for guidance only and illustration purposes only and may not be to scale. If there are any important matters likely to affect your decision to buy, please contact us before viewing the property.