



## Coleman Street

Southend On Sea, Essex, SS2 5AW

Asking Price £250,000

Cowling & Payne are delighted to market this TWO bedroom terraced property, with the bonus of being CHAIN FREE. This is an excellent opportunity for both first time buyers and investors.

Set in a convenient location, this home benefits from excellent public transport links and is ideally situated for access to nearby local amenities, making it a practical choice for those seeking ease of everyday living.

Upon entering the property, you are greeted by a spacious reception room, perfect for relaxing or entertaining guests. The layout flows seamlessly to the well-appointed kitchen, offering ample space for meal preparation and storage.

Upstairs, the accommodation comprises two bedrooms, & bathroom.

This inviting home is perfectly positioned for commuters, with Southend Victoria railway station just a short walk away, providing swift access to London Liverpool Street. Residents will appreciate the abundance of local amenities nearby, including shops, cafes, and leisure facilities, all within close reach.

This terraced property delivers a superb blend of comfort and convenience in a sought-after location.

- CHAIN FREE
- TWO BEDROOM TERRACED HOUSE
- IDEAL FOR FIRST TIME BUYERS OR INVESTORS
- CLOSE PROXIMITY TO SOUTHEND CENTRAL RAILWAY - C2C LINE
- CLOSE PROXIMITY TO SOUTHEND VICTORIA RAILWAY LINE - NATIONAL RAIL
- EASY REACH TO SOUTHEND HIGH STREET FOR LOCAL AMENITIES
- NEARBY TO SOUTHEND SEAFRONT

### Viewing

Please contact our Sales Office on 01268 730707 if you wish to arrange a viewing appointment for this property or require further information.



2



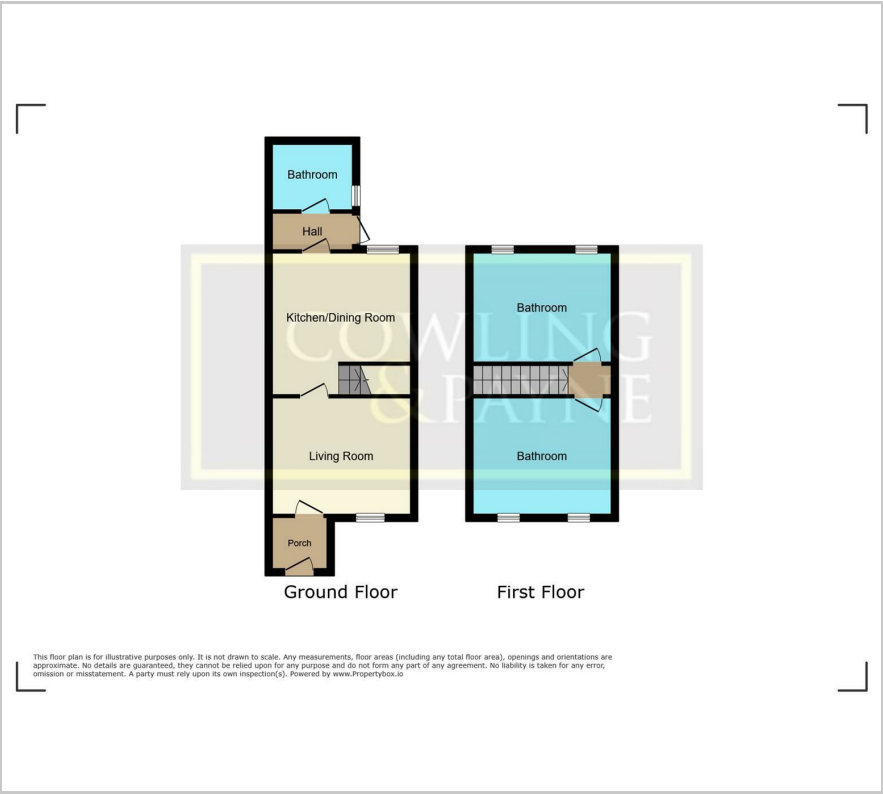
1



1



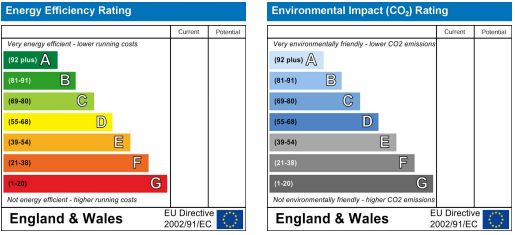
Floor Plan



Area Map



Energy Efficiency Graph



These particulars, whilst believed to be accurate are set out as a general outline only for guidance and do not constitute any part of an offer or contract. Intending purchasers should not rely on them as statements of representation of fact, but must satisfy themselves by inspection or otherwise as to their accuracy. No person in this firms employment has the authority to make or give any representation or warranty in respect of the property.