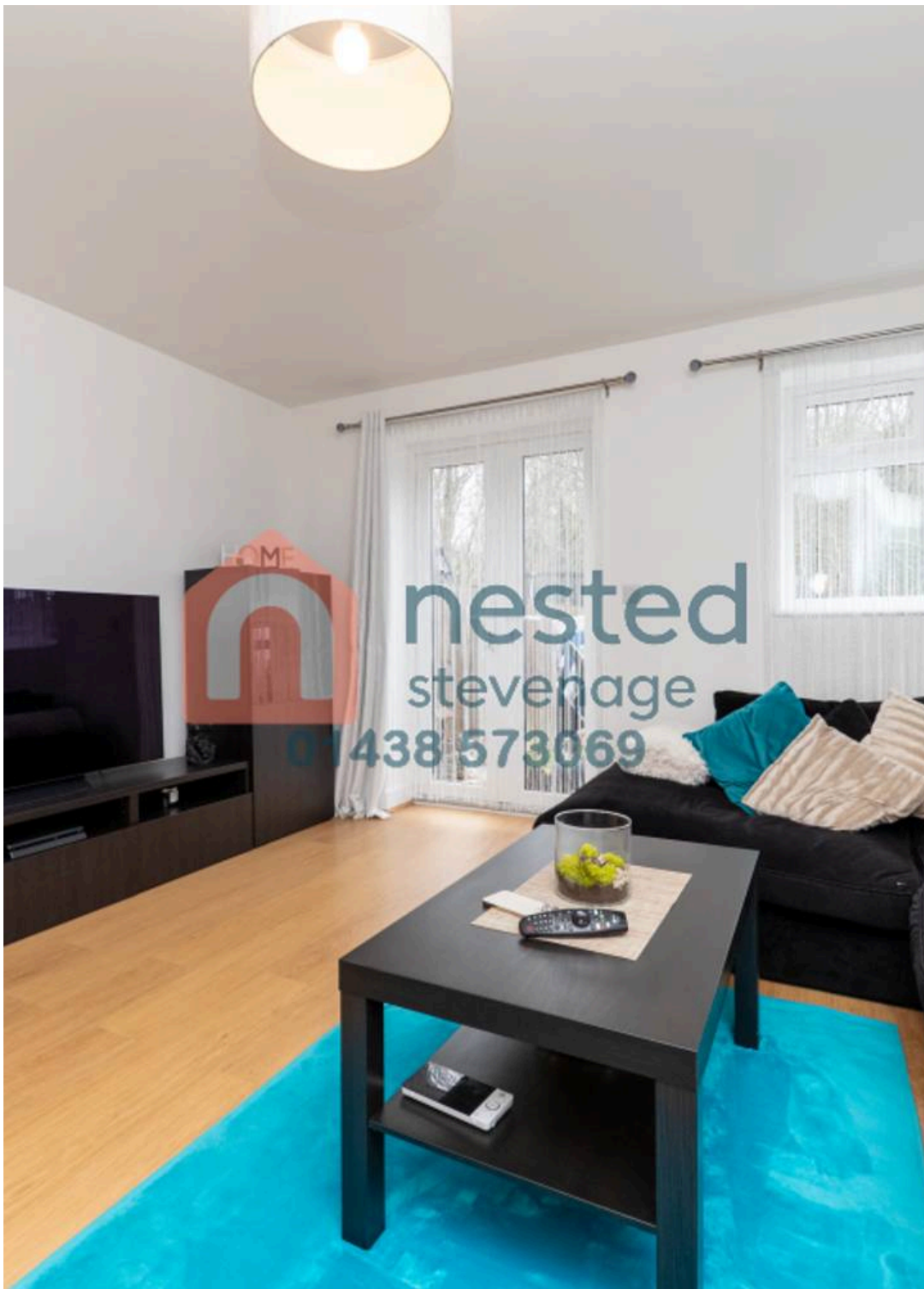




53 Breakspear, Stevenage, SG2 9SQ

Guide Price **£320,000**



53 Breakspear

Stevenage, Stevenage

Modern 2-bed home with spacious lounge/diner, sleek kitchen, ground floor WC, built-in storage, stylish bathroom, garden access, double glazing and gas central heating.

Council Tax band: C

Tenure: Freehold

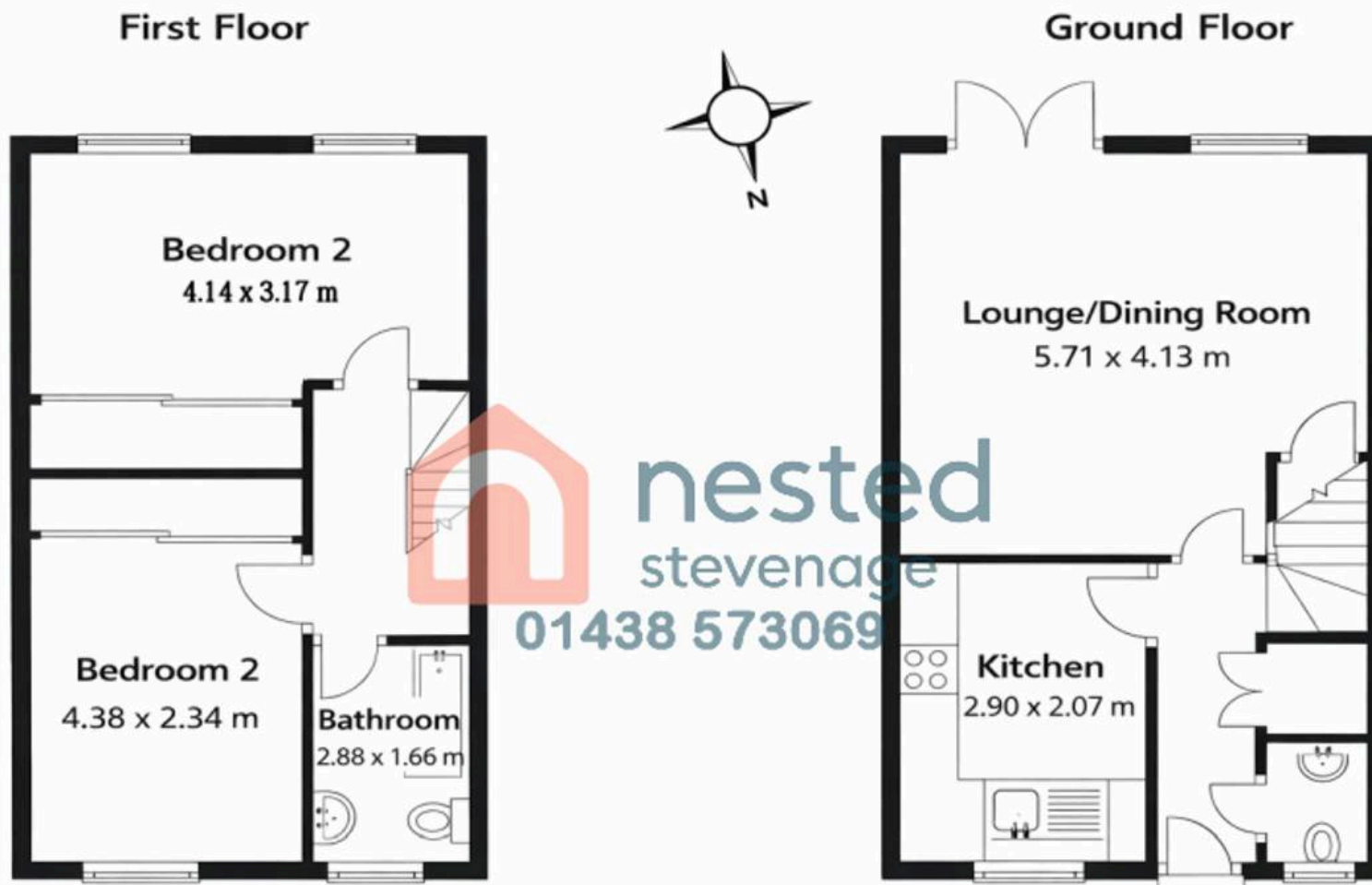
EPC Energy Efficiency Rating: C

EPC Environmental Impact Rating: B

- Offered CHAIN-FREE
- Two large double bedrooms with mirrored fitted wardrobes
- Mid-terrace modern home (built 2017)
- Larger-than-average rear garden backing onto woodland
- Quiet cul-de-sac position in popular Shephall location
- Spacious open-plan lounge/diner with French doors to garden
- Double-width driveway for two vehicles
- Modern fitted kitchen with integrated appliances







Approximate Internal Floor Area: 71.1 sq m / 766 sq ft.

This floor plan is for illustrative purposes only. All measurements, opening and orientation are approximate. No liability is taken for any error, omission or misstatement. A party must rely upon its own inspection.