



Hunter Street, WC1N

£2,600 Per calendar month

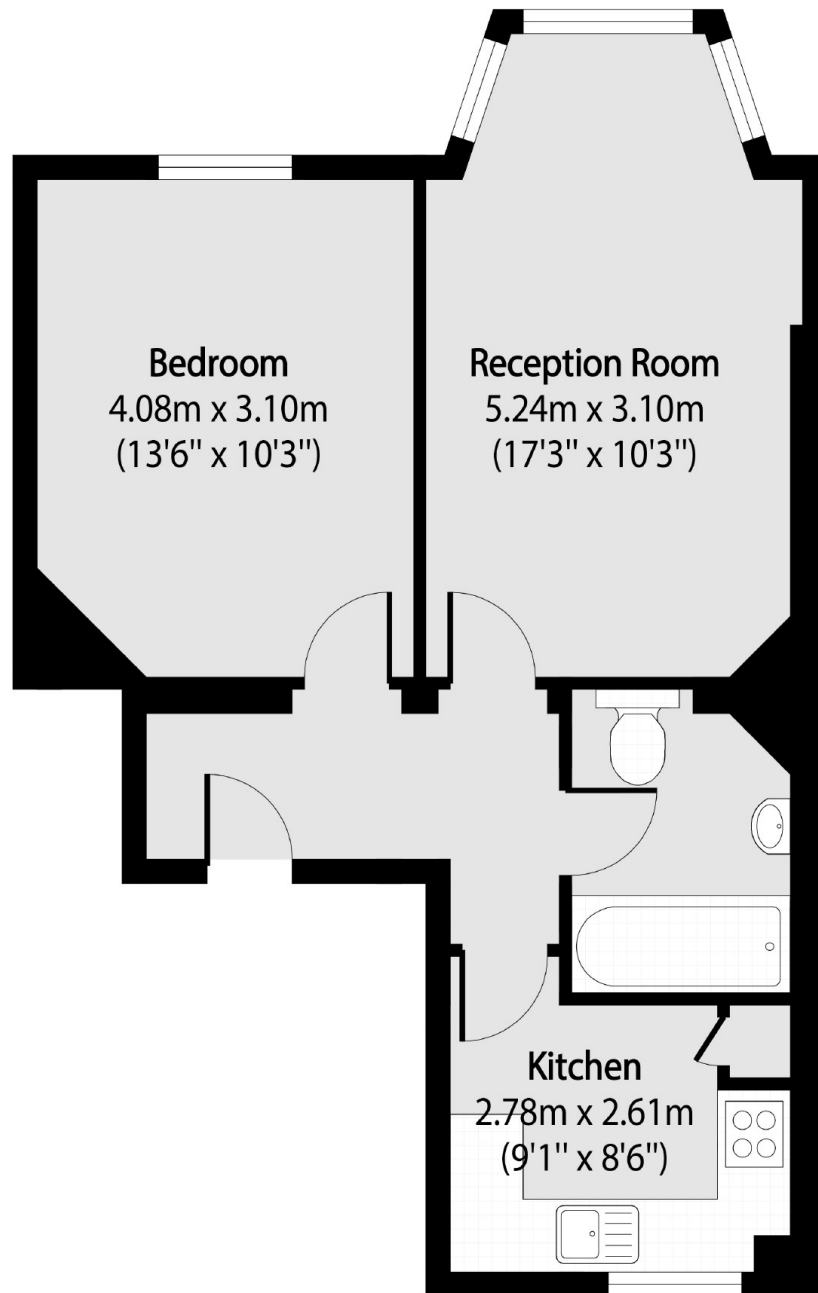
A well laid out two bedroom property in a popular purpose built block in Bloomsbury. The property has wooden floors throughout, a good size separate kitchen, lift access and a second bedroom which was converted from the living room.

Hunter House is located around the corner from the Brunswick Centre and a short walk from local universities including UCL.. It is also a short walk away from Russell Square tube station and the Piccadilly line.

Features

- Third Floor
- Lift Access
- Separate Kitchen
- Secure Access
- Excellent Transport Links
- Near Brunswick Centre

Hunter Street,
London, WC1N



Total area (approx): 44.92 sq m (483 sq. ft)