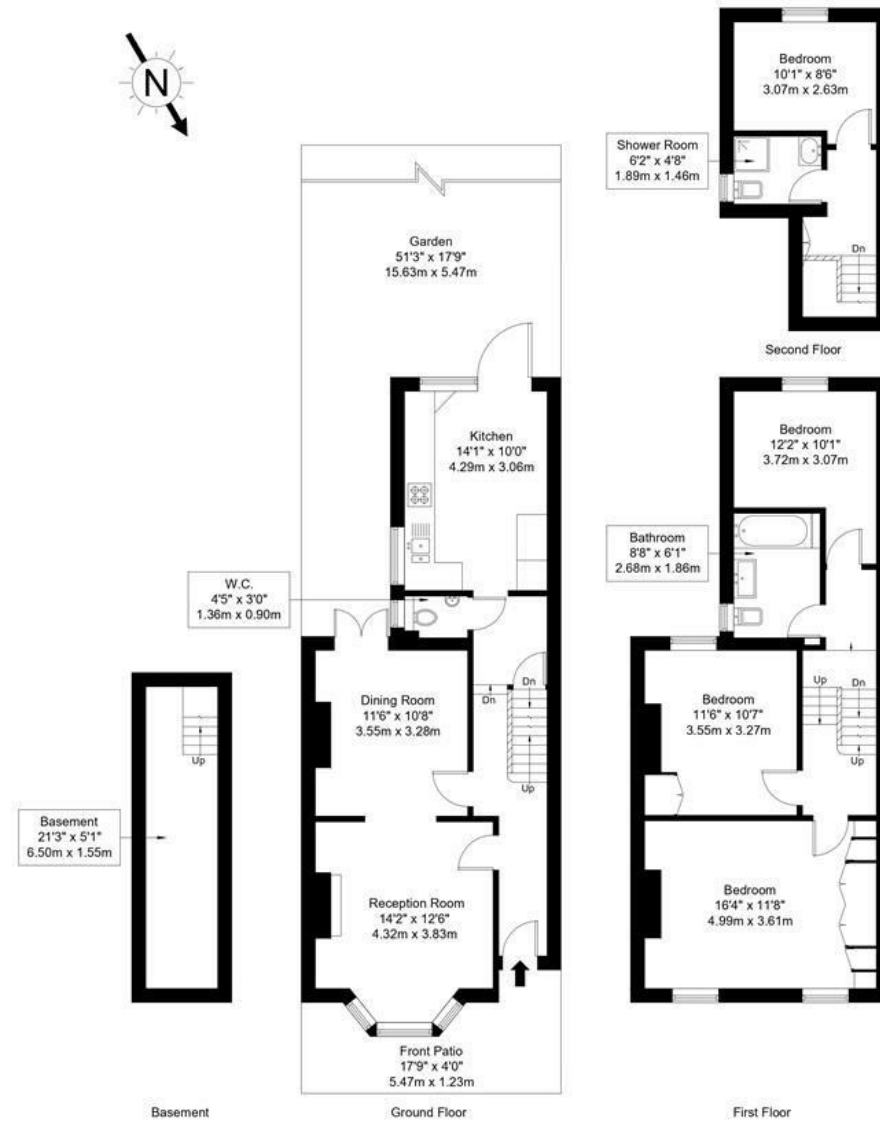


## Bective Road, London, SW15

### Bective Road, SW15 2QA

Approx Gross Internal Area = 133.38 sq m / 1436 sq ft



Ref :

Copyright **BLEU PLAN**

The Floor plan is not to scale and measurements and areas shown are approximate and therefore should be used for illustrative purposes only. The plan has been prepared in accordance with the RICS code of Measuring Practice and whilst we have confidence in the information produced it must not be relied on. Maximum lengths and widths are represented on the floor plan. If there is any aspect of particular importance, you should carry out or commission your own inspection of the property.  
Copyright @ BLEUPLAN

**DISCLAIMER**•These particulars are intended to give a fair and substantially correct overall description for the guidance of intending purchasers and do not constitute an offer or part of a contract. Prospective purchasers and/or lessees ought to seek their own professional advice.  
•All descriptions, dimensions, areas, references to condition and necessary permissions for use and occupation and other details are given in good faith and are believed to be correct, but any intending purchasers should not rely on them as statements or representations of fact, but must satisfy themselves by inspection or otherwise as to the correctness of each of them.  
•All measurements are approximate.

A superbly located and well presented four bedroom terraced house with a large south facing garden located on this quiet no through road in central Putney. The ground floor accommodation comprises an entrance hallway, elegant double reception room, fully fitted kitchen with doors to the south facing garden, guest WC and cellar.

Upstairs there are four bedrooms and two bathrooms.

This beautiful family home is perfectly located for everything Putney has to offer and is situated just a short walk from Putney High Street with all its amenities. Both Putney Mainline Station and East Putney Underground are close by as are Wandsworth Park and The River Thames.



- STUNNING PERIOD HOUSE
- FITTED KITCHEN
- TWO BATHROOMS
- SOUTH FACING GARDEN
- CHAIN FREE
- DOUBLE RECEPTION ROOM
- FOUR BEDROOMS
- DOWNSTAIRS W.C
- CELLAR

£1,350,000

Available



