

SELLING & RENTING  
HOMES  
— Since 2005 —



LAND ESTATES  
SALES, LETTINGS & MANAGEMENT



## PRIORY GARDENS DARTFORD

**£2,400 Per Month**

- Five/six bedroom house.
- Private driveway.
- Walking distance to Dartford Town Centre.
- Spacious throughout.
- Two bathrooms.
- Walking distance to Dartford Train Station.

Land Estates are pleased to present this spacious, five/six bedroom house, located in Dartford.

The ground floor of the property consists of an entrance hallway, a lounge, a separate dining room, a kitchen and the first of the bathrooms.

To the first floor there are four double bedrooms, one single bedroom, an office space and a family bathroom.

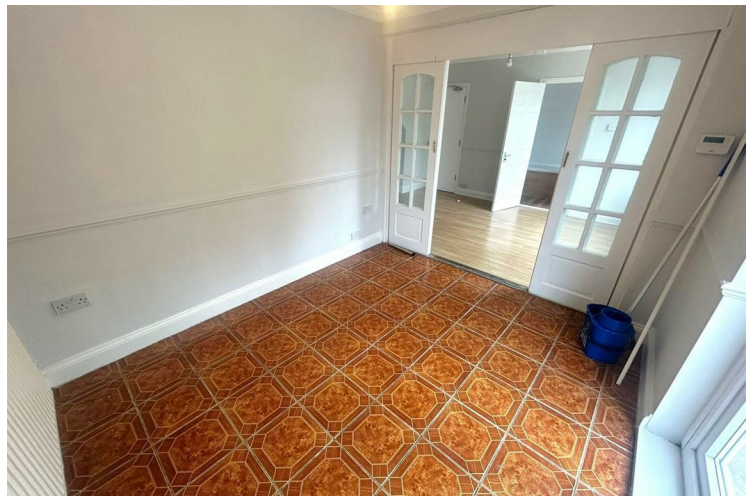
This property also benefits from a spacious garden and a private driveway.

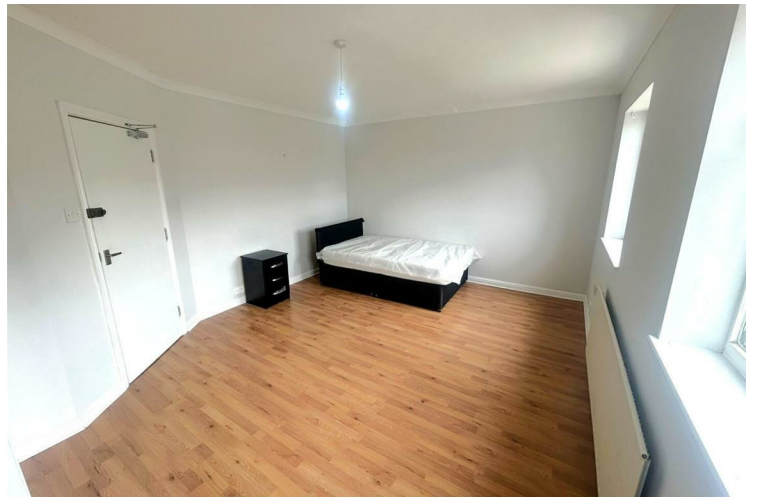
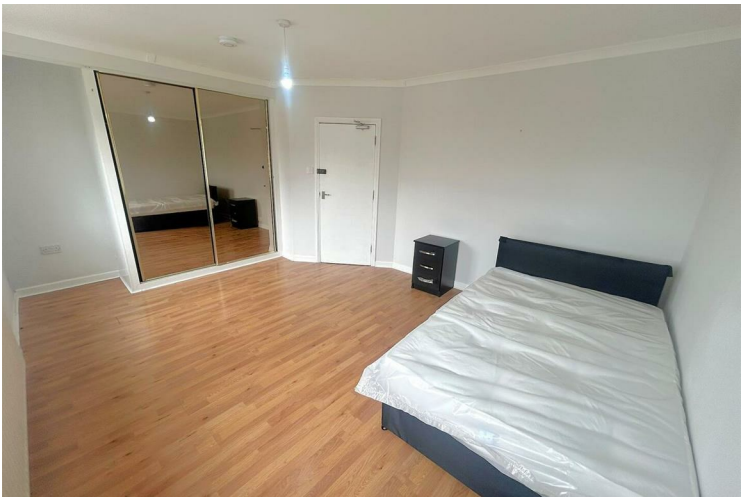
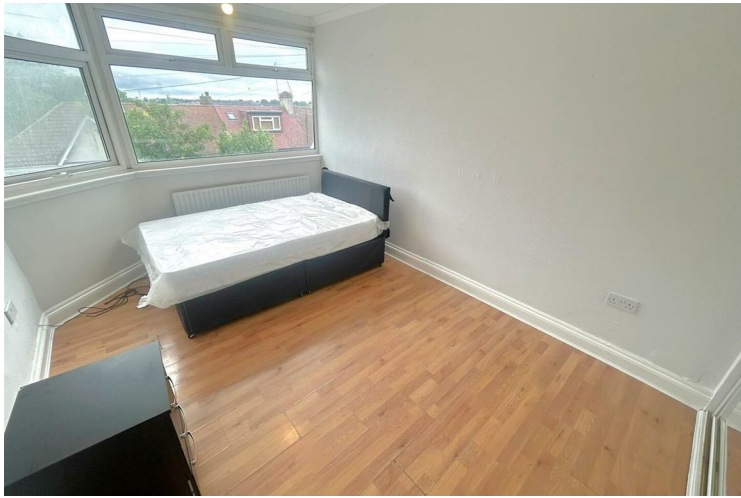
Please note that the garage is not included with the house.

This property is within walking distance to Dartford Train Station and Dartford Town Centre. There are also a lot of schools nearby including Dartford Grammar school.

This property is offered unfurnished and is available now.

Please contact Land Estates to arrange a viewing.







Energy Efficiency Rating		
	Current	Potential
<i>Very energy efficient - lower running costs</i>		
(92 plus) <b>A</b>		
(81-91) <b>B</b>		
(69-80) <b>C</b>		74
(55-68) <b>D</b>	59	
(39-54) <b>E</b>		
(21-38) <b>F</b>		
(1-20) <b>G</b>		
<i>Not energy efficient - higher running costs</i>		
<b>England &amp; Wales</b>	EU Directive 2002/91/EC	

**EPC Rating: D      Council Tax Band: E**

Agents Note: Whilst every care has been taken to prepare these particulars, they are for guidance purposes only. All measurements are approximate and are for general guidance purposes only and whilst every care has been taken to ensure their accuracy, they should not be relied upon and potential buyers/tenants are advised to recheck the measurements

Land Estate  
6 Market Street  
Dartford  
Kent  
DA1 1ET

01322 413501  
info@landestate.co.uk  
www.landestate.co.uk



**LAND ESTATES**  
SALES, LETTINGS & MANAGEMENT