

10 South Street

Horsham, RH13 8EL

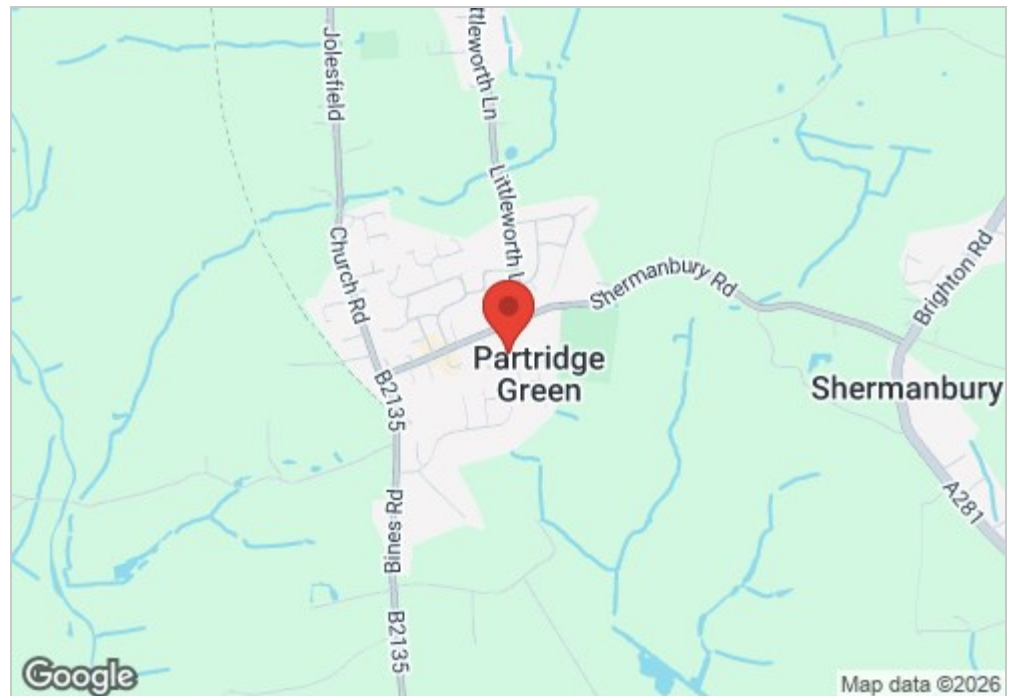
Asking price £350,000

Guide Price £350,000 - £375,000 - Nestled in the charming village of Partridge Green, Horsham, this delightful house on South Street. Built in 1890, the property boasts a rich history while providing ample space for comfortable living. With a generous 947 square feet, this home features two well-proportioned bedrooms, making it ideal for small families or couples seeking a peaceful retreat.

The inviting reception room serves as the heart of the home, providing a warm and welcoming atmosphere for both relaxation and entertaining. The property also includes a thoughtfully designed bathroom at the back of the property.

One of the standout features of this residence is the lovely garden room, which offers a serene space to enjoy the beauty of the outdoors, regardless of the weather. Additionally, the loft room presents an excellent opportunity for a home office, playroom, or extra storage, catering to your individual needs.

The south-west facing garden, extending an impressive 100 feet, is a true gem. It provides a perfect setting for outdoor gatherings, gardening enthusiasts, or simply enjoying the sunshine. The lush greenery and ample space make it an ideal spot for children to play or for hosting summer barbecues.

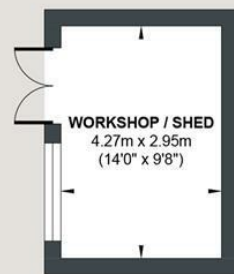


- 100ft south west facing garden
- Loft room
- Garden room
- Great location

Energy Efficiency Rating		
	Current	Potential
Very energy efficient - lower running costs		
(92 plus) A		
(81-91) B		
(69-80) C		
(55-68) D		
(39-54) E		
(21-38) F		
(1-20) G		
Not energy efficient - higher running costs		
	55	
England & Wales		EU Directive 2002/91/EC

SOUTH STREET

Approx. Gross Internal Floor (Excluding Outbuilding) Area = 89.9 sq m / 967.5 sq ft
Illustration for identification purposes only, measurements are approximate, not to scale.



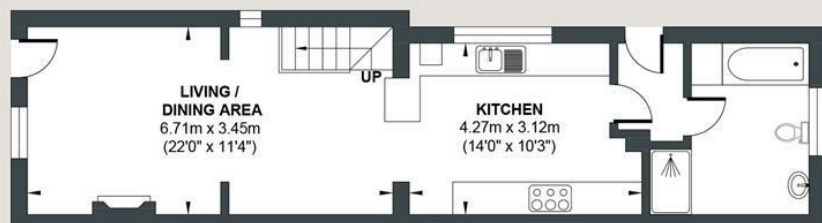
OUTBUILDING

Approximate Floor Area
134.50 sq ft
(12.50 sq m)



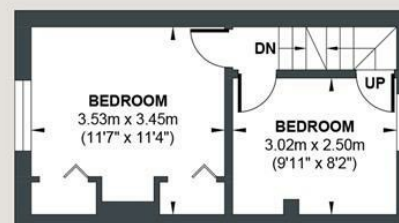
OUTBUILDING

Approximate Floor Area
113.50 sq ft
(10.50 sq m)



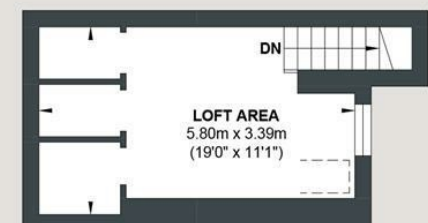
GROUND FLOOR

Approximate Floor Area
508.0 sq ft
(47.20 sq m)



FIRST FLOOR

Approximate Floor Area
249.07 sq ft
(23.15 sq m)



SECOND FLOOR

Approximate Floor Area
210.43 sq ft
(19.55 sq m)



Foster & Co and their clients give notice that:

These sales particulars do not constitute any part of an offer of contract and are for guidance for prospective purchases only and should be not relied upon as a statement of fact.

We are not to be held responsible for material information that has not been given to us by our client at the time of marketing.

All measurements are approximate

