

Knox Court Bilton Road
Rugby
CV22 7AL



Knox Court Bilton Road

£289,950

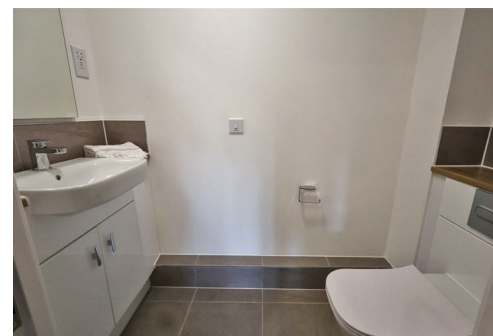
The development

Knox Court - This superb Retirement Living PLUS development in attractive Bilton road, Rugby – exclusive to the over 70s, The beautiful communal facilities set within a gated community and conveniently situated close to all the amenities found in Rugby's bustling town centre, including 'real ale' pubs, restaurants, supermarkets, high street and independent shops and sports facilities.

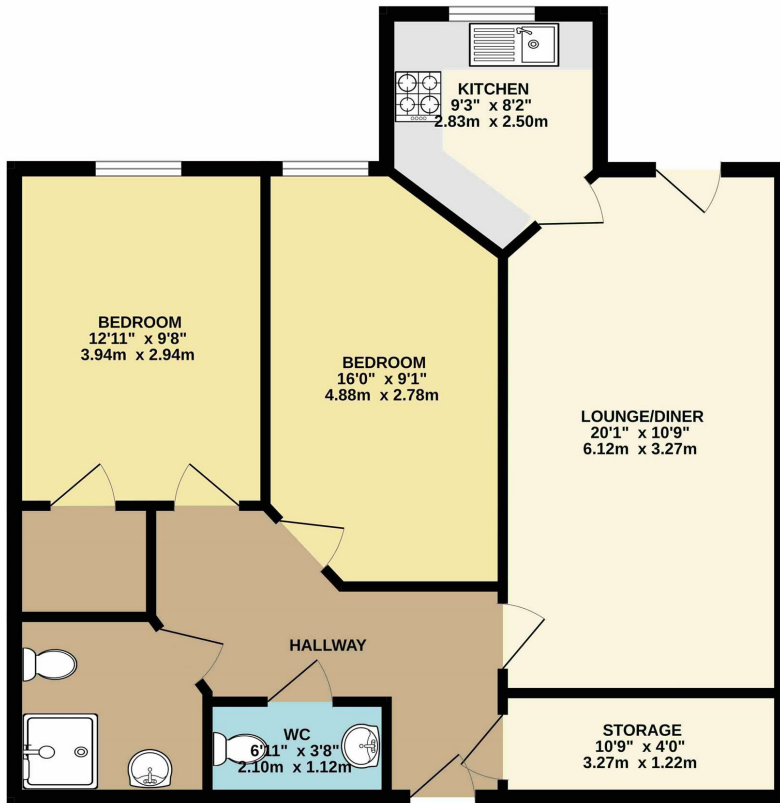
You'd find all the benefits of a Retirement Living development but with thoughtful extra services that are there for you now, and in the future. This includes a friendly Manager onsite at all times and a chef run bistro, for when you don't feel like cooking – or just fancy a barista-style coffee with a friend. An hour's domestic support every week is included – more if you want it, plus the option of tailored personal care on tap should you need it. Pets are welcome too!

Knox Court is designed to encourage community feeling to flourish, while also allowing you to enjoy the complete privacy of your own spacious retirement apartment. You'll find stylish communal spaces, including a luxurious lounge with free Wi-Fi, and the large courtyard garden - ideal for meeting your friends, neighbours and family for a drink and a chat. And of course, we'll do all the maintenance! There will also be a hotel-style guest suite as a convenient alternative when people come to stay. The communal facilities will become social hubs – a hive of informal gatherings and regular clubs, events and meet-ups to suit all sorts of interests. You'll find things like film nights, pie and mash lunches, knitting clubs, cocktail evenings, music, yoga, birthday parties and even the odd fiesta.

The apartments at Knox Court are designed with intelligent ergonomics and Modern Methods of Construction to ensure they are a joy to live in. As well as being well-insulated, warm and energy-efficient, they have the latest safety and security features built in. You'll benefit from a 24-hour emergency call system, fire detection and door camera entry, so you can see who it is before answering the door- as well as the reassurance of a manager onsite at all times.



GROUND FLOOR



Local Authority

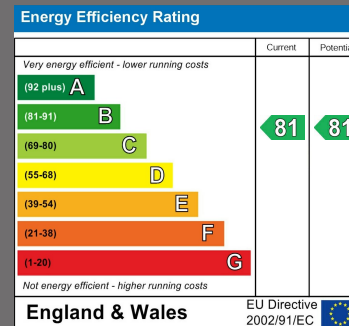
Council Tax Band

B

EPC Rating

B

Directions



Agents Note: Whilst every care has been taken to prepare these particulars, they are for guidance purposes only. All measurements are approximate and are for general guidance purposes only and whilst every care has been taken to ensure their accuracy, they should not be relied upon and potential buyers/tenants are advised to recheck the measurements



Cadman Homes
24 Railway Terrace
Rugby
Warwickshire
CV21 3LJ

Contact

01788560905

info@cadmanhomes.co.uk

www.cadmanhomes.co.uk



Cadman Homes

Family Owned, Family Run, Family Values