



Clarence Road, SW19

£1,050,000

A three double bedroom, two bathroom, Victorian mid terrace house, presented in superb condition. There is a south facing garden, and extended kitchen/ dining room and is located at the top of the road.

Nestled in the highly regarded 'South Park Gardens' grid, offering quick access to Wimbledon Town Centre, district and northern line tube and Haydons Road Thames Link. There are also a number outstanding Primary Schools nearby.

Features

- Three Double Bedrooms
- Two Bathrooms
- South Facing Garden
- Close To The Gardens
- Holy Trinity Catchment
- Brick Fronted Victorian



Clarence Road, SW19

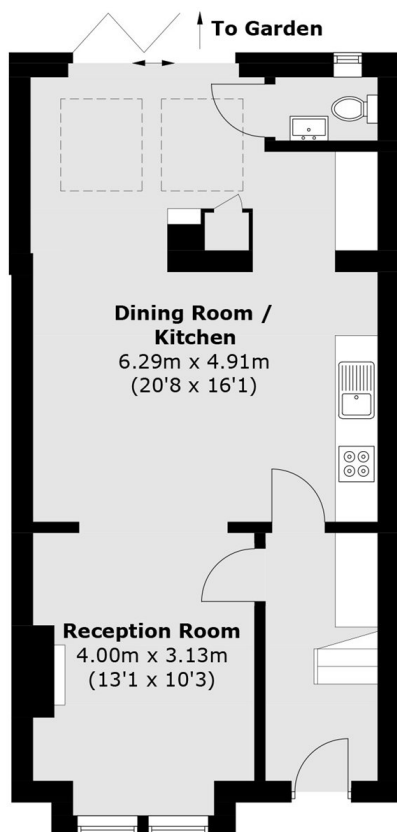
There is a reception room to the front of the property on the ground floor which is entered by the large entrance hall. The rear of the house has been brilliantly extended to create a dining/ breakfast room which pulls the reception room, kitchen and breakfast room all together, with bi-folding doors to the south facing garden to give the perfect indoor/ outdoor living experience.

The first floor of the house has two double bedrooms, one of which further benefits from built in wardrobes, twinned with a family bathroom. The loft has been converted and now provides a further double bedroom complete with eaves storage and en-suite shower room.

The garden is south facing and a perfect place to enjoy the sunny weather.



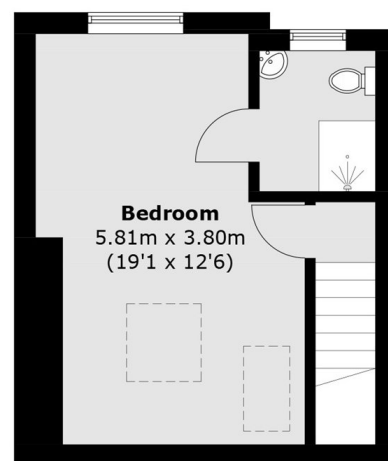
Clarence Road, London, SW19



Ground Floor



First Floor



Second Floor

Total area (approx.): 112.2 sq. m (1,207.7 sq. ft)