



Hart Street
Maidstone ME16 8FE

for sale offers over
£200,000



Property Description

Charming Riverside Retreat: Modern Two-Bedroom Apartment in Maidstone

Nestled on the outskirts of Maidstone, this stunning second-floor apartment, accessed via secure gates offers a perfect blend of modern living & tranquil surroundings. With breathtaking views overlooking the communal garden that gently leads to the riverside, this property is an idyllic haven for first-time buyers or savvy investors seeking a slice of serenity close to urban conveniences.

As you step into this beautifully designed two-bedroom apartment, you are greeted by an abundance of natural light that floods through generous windows, creating a warm & inviting atmosphere. The contemporary layout maximize's space while providing a seamless flow between rooms-ideal for both relaxation and entertaining. The living area boasts stylish finishes and ample room for your personal touch, making it the perfect backdrop for cozy evenings or lively gatherings with friends.

The well-appointed kitchen features modern appliances and sleek cabinetry, ensuring every culinary endeavour is met with ease and efficiency. Both bedrooms are generously sized, offering peaceful retreats at the end of the day, while large windows frame picturesque views that inspire tranquility.

Step outside to discover the communal garden-a serene oasis where you can unwind amidst nature's beauty or enjoy leisurely strolls along the riverside. Just a short walk away lies the vibrant town centre and Lockmeadow Entertainment Centre.



Entrance Hall

Lounge

15' 10" Max x 10' 10" Max (4.83m Max x 3.30m Max)

Balcony

Kitchen

11' 10" Max x 6' 6" Max (3.61m Max x 1.98m Max)

Bedroom One

13' Max x 8' 10" Max (3.96m Max x 2.69m Max)

En Suite

Bedroom Two

11' 8" Max x 8' 1" Max (3.56m Max x 2.46m Max)

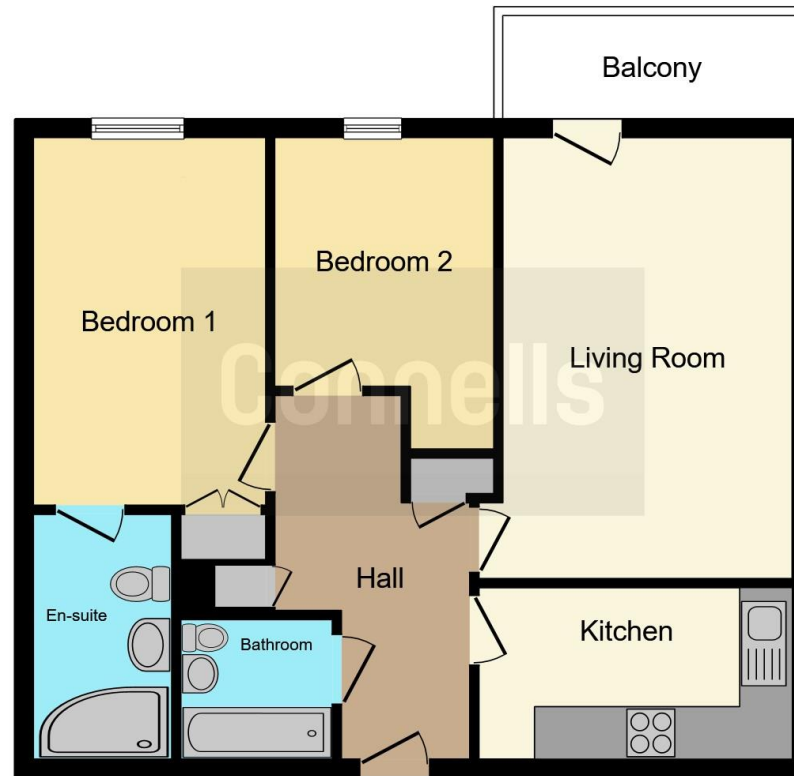
Bathroom

Parking









This floor plan is for illustrative purposes only. It is not drawn to scale. Any measurements, floor areas (including any total floor area), openings and orientation are approximate. No details are guaranteed, they cannot be relied upon for any purpose and they do not form part of any agreement. No liability is taken for any error, omission or misstatement. A party must rely upon its own inspection(s). Powered by www.focalagent.com

To view this property please contact Connells on

T 01622 751034
E maidstone@connells.co.uk

30 King Street
 MAIDSTONE ME14 1BS

EPC Rating: B

Council Tax
 Band: D

Service Charge:
 1892.00

Ground Rent:
 228.00

Tenure: Leasehold

view this property online connells.co.uk/Property/MAI407909

This is a Leasehold property with details as follows; Term of Lease 999 years from 01 Jan 2006. Should you require further information please contact the branch. Please Note additional fees could be incurred for items such as

1. MONEY LAUNDERING REGULATIONS Intending purchasers will be asked to produce identification documentation at a later stage and we would ask for your co-operation in order that there will be no delay in agreeing the sale. 2. These particulars do not constitute part or all of an offer or contract. 3. The measurements indicated are supplied for guidance only and as such must be considered incorrect. Potential buyers are advised to recheck measurements before committing to any expense. 4. We have not tested any apparatus, equipment, fixtures, fittings or services and it is in the buyers interest to check the working condition of any appliances.

Connells Residential is registered in England and Wales under company number 1489613, Registered Office is Cumbria House, 16-20 Hockliffe Street, Leighton Buzzard, Bedfordshire, LU7 1GN. VAT Registration Number is 500 2481 05.



See all our properties at www.connells.co.uk | www.rightmove.co.uk | www.zoopla.co.uk

Property Ref: MAI407909 - 0006