

## Acacia Road, SW16

£250,000

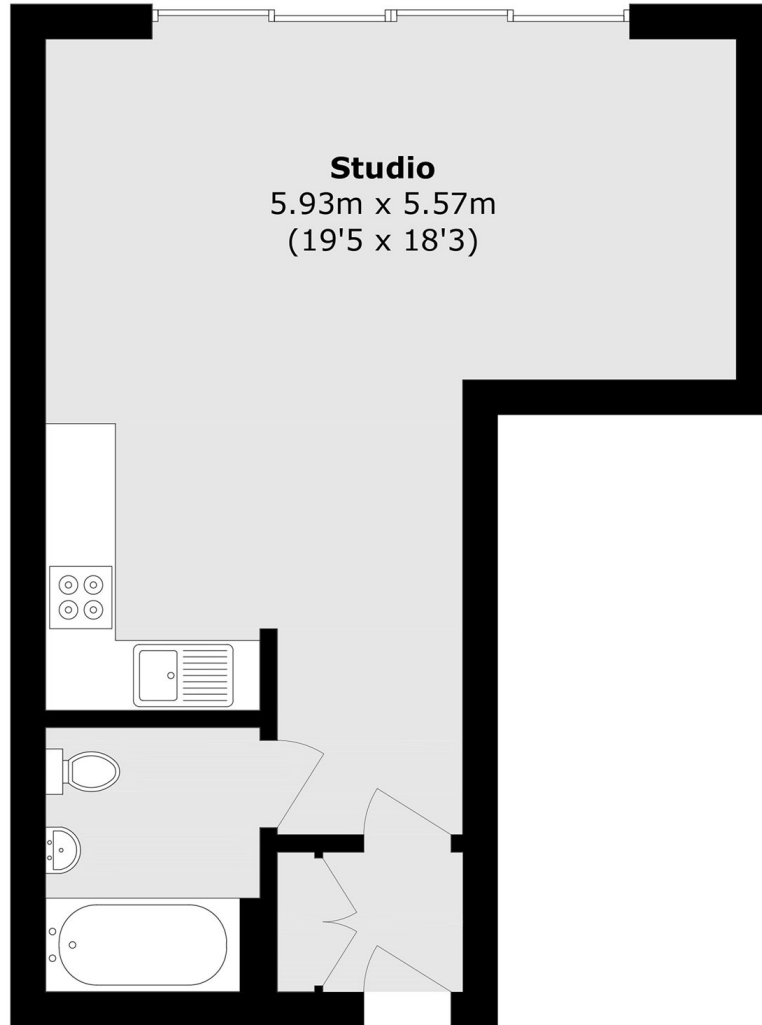
\* Share Of The Freehold \* A ground-floor studio apartment with a large patio garden and it's own front door. There is a share of the freehold alongside a 999-year lease. There is a high specification throughout, including German Kitchens, appliances and underfloor heating in the bathrooms.

Lilium House is a boutique development tucked nicely away from the hustle and bustle of the main road but within convenient walking distance to shops, bars, restaurants and cafes as well as with extremely easy access to Norbury Station. The green open spaces of Norbury Park are just across the road, with Streatham Common also just a short walk away.

### Features

- Patio Garden Flat
- Own Front Door
- Share Of The Freehold
- High Specification
- Fully Private Outside Space
- German Kitchens & Appliances
- Chain Free
- New Homes 10 Year Warranty

Acacia Road,  
Streatham, SW16



### Ground Floor

Total area (approx.): 36.2 sq. m (389.7 sq. ft)