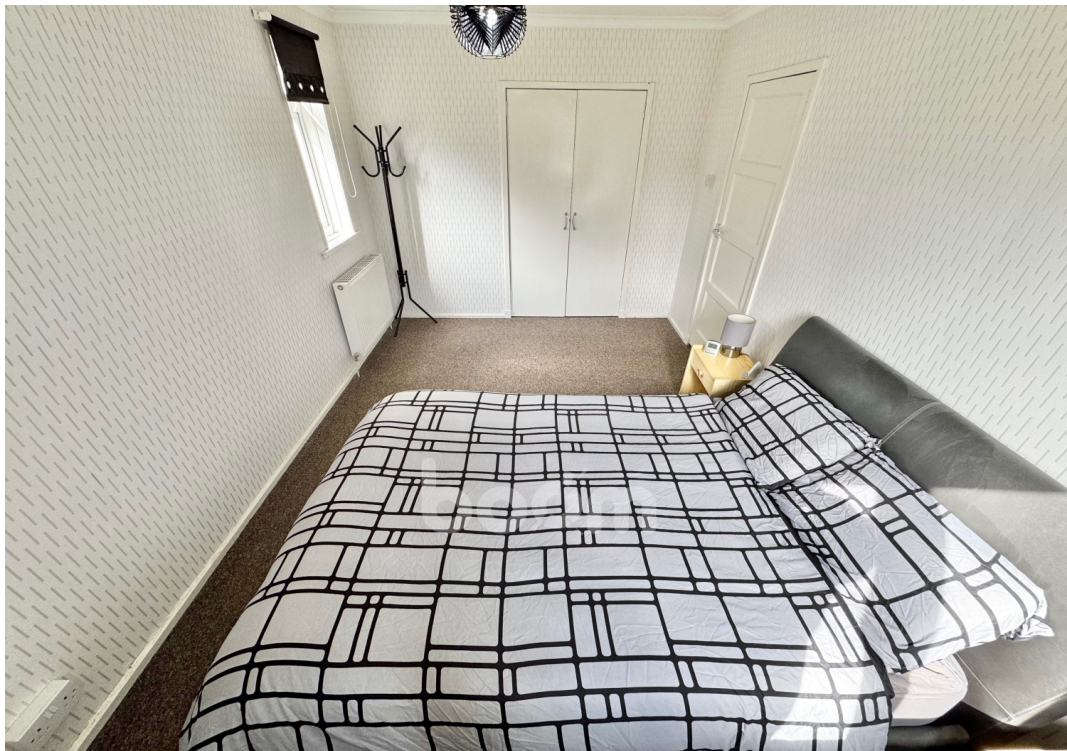
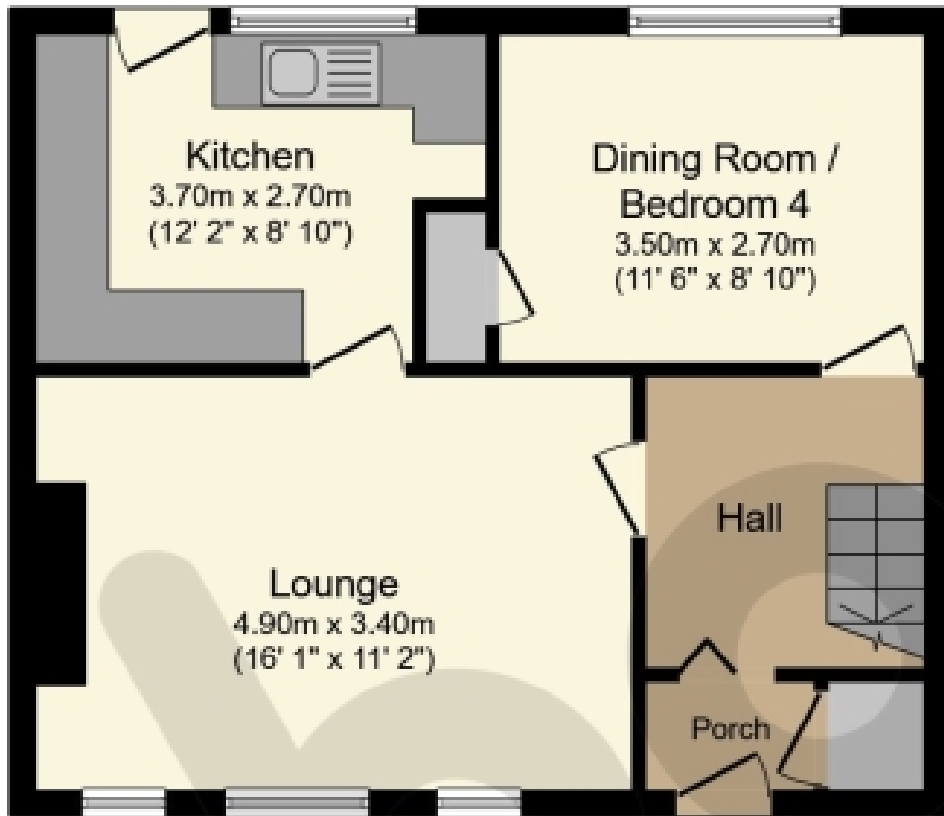




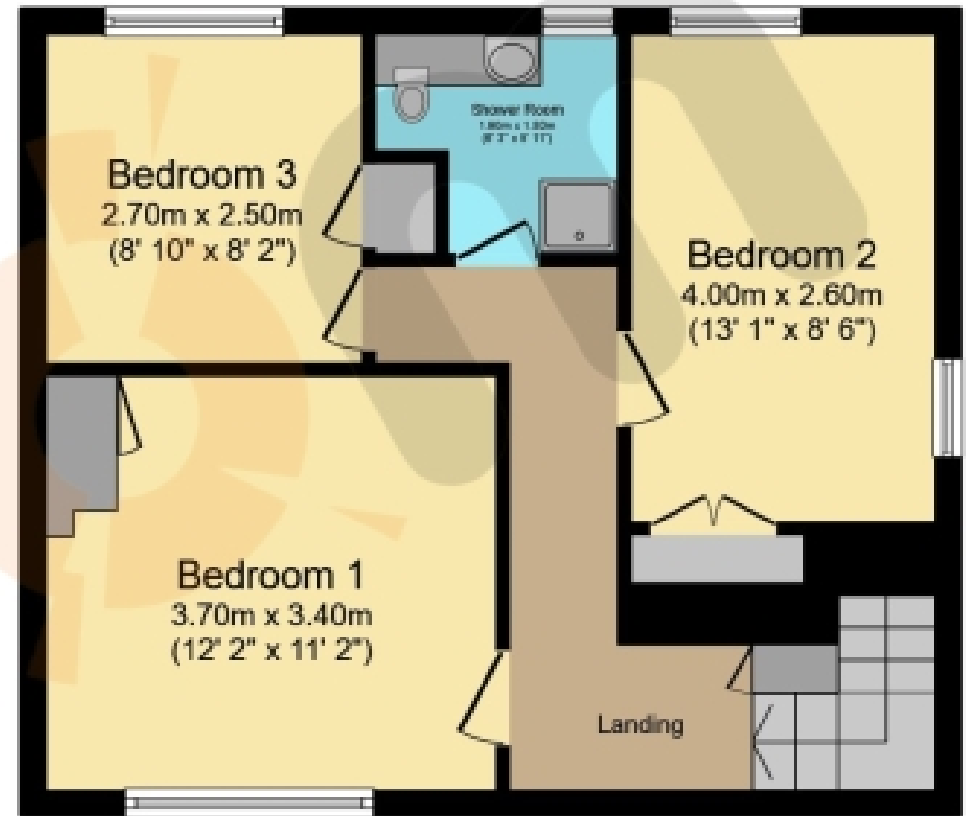
Cherrywood Drive, Beith

Offers Over £139,995





Ground Floor
Floor area 45.3 sq.m. (487 sq.ft.)



First Floor
Floor area 45.2 sq.m. (487 sq.ft.)

Total floor area: 90.5 sq.m. (974 sq.ft.)

This floor plan is for illustrative purposes only. It is not drawn to scale. Any measurements, floor areas (including any total floor area), openings and orientations are approximate. No details are guaranteed, they cannot be relied upon for any purpose and do not form any part of any agreement. No liability is taken for any error, omission or misstatement. A party must rely upon its own inspection(s). Powered by www.Propertybox.io

THE PROPERTY

This fantastic four bedroom semi-detached family home offers flexible generous living space and a stunning rear garden, creating a superb opportunity to extend subject to planning and further enhance the property.

To the front of the property sits a low maintenance garden, as well as the large multicar driveway. Step inside and you're greeted by a generously sized lounge, finished in calming neutral tones. Three large windows line the left wall, allowing natural light to pour in and enhance the bright, welcoming feel of the space.

Moving further through the home, you are welcomed into the dining room, a flexible space ideal for use as a fourth bedroom or a home office. The ground floor is finished by a well-equipped kitchen, showcasing oak-effect base and wall units paired with striking black marble-effect worktops. With an abundance of storage, the kitchen offers the perfect blend of style and functionality.

The first floor comprises of three well-proportioned bedrooms, all spacious enough for double beds and enhanced by built-in storage. Completing the upper floor is a stylish, newly fitted shower room, featuring a walk-in shower, WC, and a wash hand basin set within a sleek vanity unit.

Outside, the impressive rear garden is so well presented. Spacious and fully enclosed, it provides the perfect setting for a variety of uses - whether extending the home (subject to the relevant permissions) or simply enjoying a safe and private space for children and pets. Enclosed by tall timber fencing, it offers excellent privacy. The property also benefits from gas central heating.

Ideally situated for Beith Primary and within walking distance of the newly built secondary School, Garnock Community Campus with leisure suite and swimming pool. For detailed information on schooling, please use The Property Boom's school catchment and performance tool on our website. Park and ride facilities at Glengarnock train station are less than a five-minute drive and a regular bus service will have you in Glasgow City Centre in under 35 minutes. The West Coast with beautiful sandy beaches is only 20 minutes' drive or a short train journey away. The picturesque town of Beith is a delightful place with local cafes and an eclectic range of shops.

Viewing by appointment – please contact The Property Boom to arrange a viewing or for any further information and a copy of the Home Report. Any areas, measurements or distances quoted are approximate and floor Plans are only for illustration purposes and are not to scale. Thank you.

WOULD YOU LIKE A FREE DETAILED VALUATION OF YOUR OWN PROPERTY? TAKE ADVANTAGE OF OUR DECADES OF EXPERIENCE AND GET YOUR FREE PROPERTY VALUATION FROM OUR FRIENDLY AND APPROACHABLE TEAM. WE CUT THROUGH THE JARGON AND GIVE YOU SOLID ADVICE ON HOW AND WHEN TO SELL YOUR PROPERTY.

THESE PARTICULARS ARE ISSUED IN GOOD FAITH BUT DO NOT CONSTITUTE REPRESENTATIONS OF FACT OR FORM PART OF ANY OFFER OR CONTRACT.

www.thepropertyboom.com
Head Office : 31 Braehead, Beith, KA15 1EG
Tel: 0333 900 9089 / Email: smile@thepropertyboom.com