

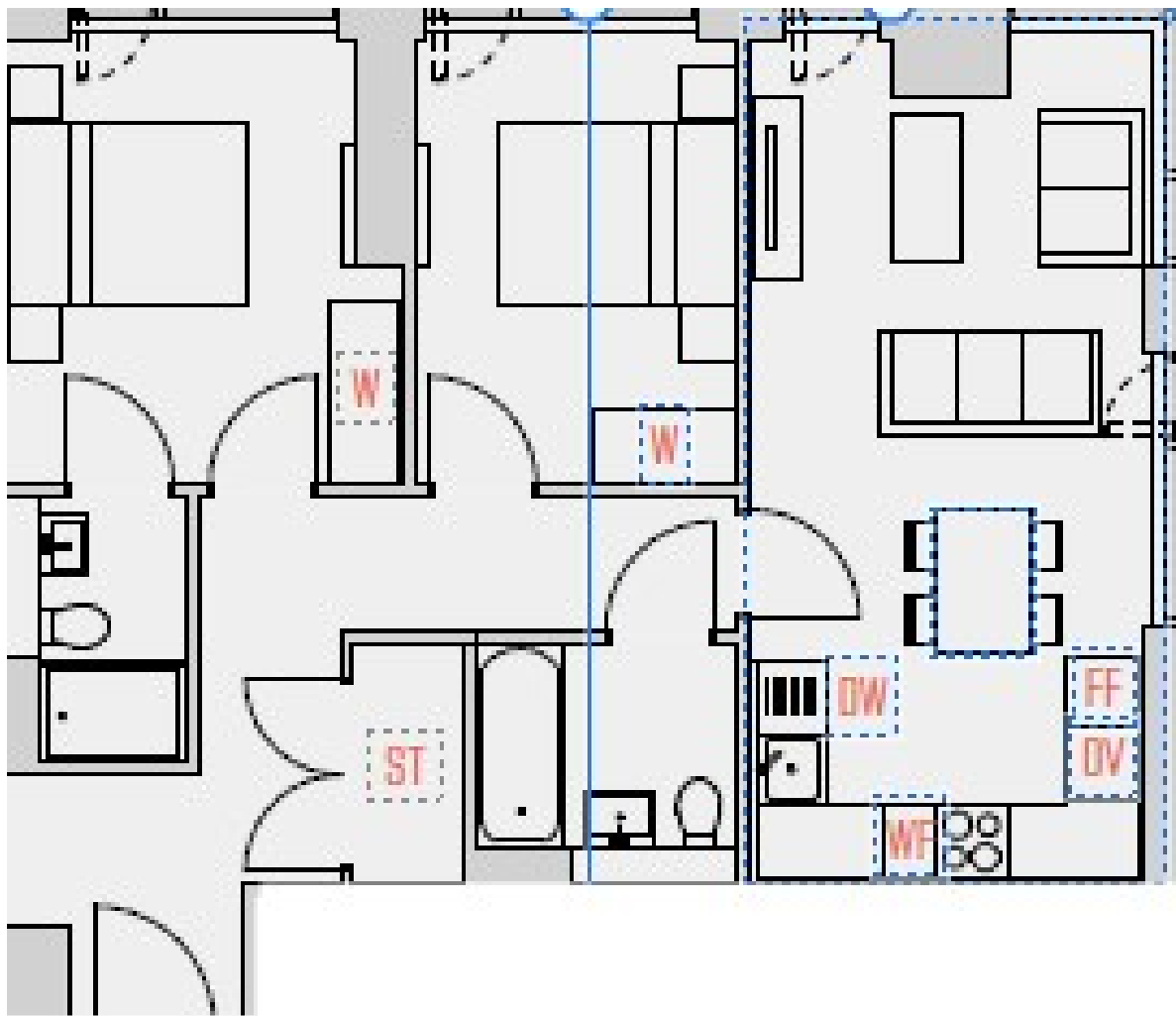


**2 Bed
Apartment
located in Colliers
Yard**

£1,800 Per Month



 **NPP
RESIDENTIAL**



DIRECTIONS

CONTACT

22 Lloyd Street
Manchester
M2 5WA

E: info@nppresidential.co.uk
T: 0161 639 0059
<https://nppresidential.co.uk/>

EPC Rating: B
Council Tax Band: D

Energy Efficiency Rating		Current	Potential
<i>Very energy efficient - lower running costs</i>			
(92 plus) A			
(81-91) B		84	84
(69-80) C			
(55-68) D			
(39-54) E			
(21-38) F			
(1-20) G			
<i>Not energy efficient - higher running costs</i>			
England & Wales		EU Directive 2002/91/EC	

