

Kendal Steps

St Georges Fields, W2

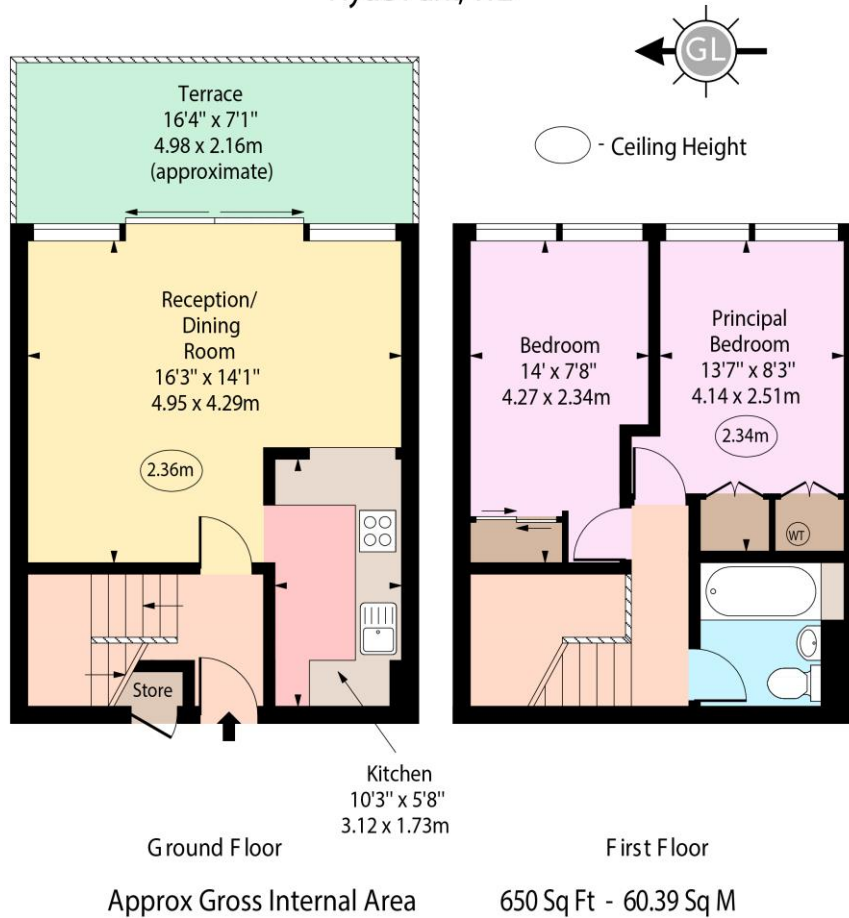
Asking Price £713,000

A well-presented two double bedroom duplex set within the sought after St George's Fields development. Arranged over the ground and first floors, the property comprises a spacious reception room with access to a private terrace, a separate fitted kitchen, two double bedrooms and a modern bathroom.

Ideally located for the amenities of Connaught Village and within easy reach of Hyde Park, with excellent transport links nearby including Marble Arch, Paddington, Lancaster Gate and Edgware Road.



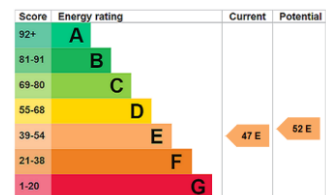
Kendal Steps,
St Georges Fields,
Hyde Park, W2



Every attempt has been made to ensure the accuracy of the floor plan shown. However, all measurements, fixtures, fittings, and data shown are approximate interpretations and for illustrative purposes only. Measured according to the RICS. Not To Scale.

www.goldlens.co.uk
Ref. No. 031162K

Tenure: Leasehold 154 years remaining
Service Charge: Please Enquire
Ground Rent: Please Enquire
Local Authority: City of Westminster
Council Tax Band: G



Chestertons Hyde Park & Marylebone Sales

40 Connaught Street
London
W2 2AB
hydepark@chestertons.co.uk
020 7298 5900
chestertons.co.uk

Chesterton UK Services Limited trading as Chestertons for themselves and for the vendor of this property whose agents they are, give notice that (i) these particulars do not constitute any part of an offer or contract, (ii) all statements contained within these particulars are made without responsibility on the part of Chestertons or the vendor, (iii) whilst made in good faith, none of the statements contained within these particulars are to be relied upon as a statement or representation of fact, (iv) any intending purchasers must satisfy themselves by inspection or otherwise as to the correctness of each of the statements contained within these particulars, (v) the vendor does not make or give either Chestertons or any person in their employment any authority to make or give representation or warranty whatsoever in relation to this property. Wide angle lenses may be used. ©Copyright Chestertons | Chesterton UK Services Limited | Registered Office 40 Connaught Street, Hyde Park, London W2 2AB Registered Company Number 05334580.

