



| Property brochure

# Regents Village

## Cheltenham



# Regents Village

Regents Village is set on the northern outskirts of Cheltenham, on the edge of Swindon Village. A new home here puts you within short walking distance of shops, supermarkets and services at the neighbouring retail park, while just 2.5 miles away you'll find the vibrant nightlife, fantastic shopping and elegant promenades of Cheltenham town centre.

## **Easily within reach**

Although Cheltenham is a bustling and wellconnected town, it also enjoys proximity to some stunning countryside. The Cotswolds Area of Outstanding Natural Beauty stretches out to the east, home to idyllic villages and beautiful viewpoints – the highest of which, Cleeve Hill, is just an 11-minute drive from Regents Village. Malvern Hills Area of Outstanding Natural Beauty is also close by, while closer to home Pittville Park offers lakeside walks and picnic spots in Cheltenham itself.

## **Great transport links**

Cheltenham is a great base for anyone wanting to commute in the region. Regents Village is just 2 miles from Junction 10 of the M5, which leads north to Tewkesbury, Worcester and Birmingham. Heading south you can reach Gloucester and Bristol, while the nearby A40 leads directly to Oxford. Cheltenham Spa train station operates routes to Birmingham in 40 minutes and London Paddington in 2 hours, and there are good local bus routes too.



# Site map



This site layout is intended for illustrative purposes only, and may be subject to change, for example, in response to market demand, ground conditions or technical and planning reasons. Trees, planting and public open space shown are indicative, actual numbers and positions may vary. This site plan does not form any part of a warranty or contract. Further information is available from a site sales adviser. The location of the affordable housing on this plan is indicative only and both the location and number of affordable housing plots may be subject to change.



## Plot 228, 229 and 230

**Semi detached**

**67 sqm**

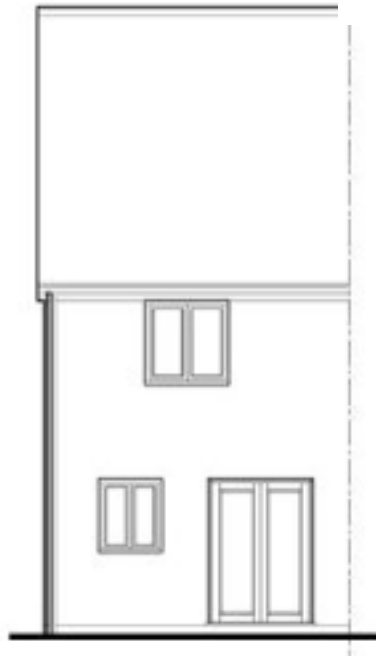
**2 bedrooms**

**2 parking spaces**

**Garden**

**Current market  
£285,000**

# Elevations



**Rear elevation**



**Side elevation**

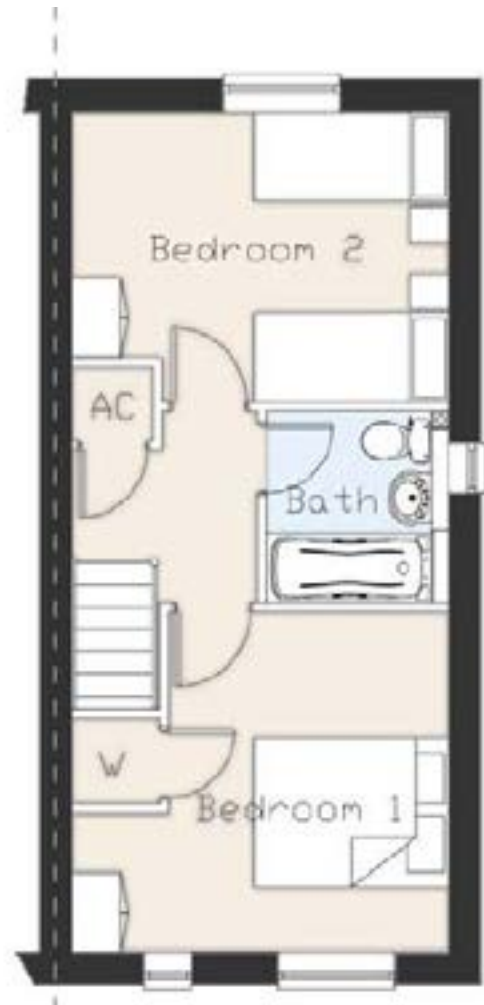


**Side elevation**

# Floor plan



**Ground floor**



**First floor**

# Finding Regents Village

Swindon Village  
Cheltenham  
Gloucestershire  
GL51 9RR

**0800 408 0000**

**[shared.ownership@cheltenham.gov.uk](mailto:shared.ownership@cheltenham.gov.uk)**

Regents Village is a marketing name only. The copyright in this document and design is confidential to and the property of Persimmon Homes Developments 2024. These details are intended to give a general idea of the type of home but they do not form part of any specification or contract. The dimensions are approximate and may vary depending on internal finish. By the time you read this some of the details may have changed because of the Persimmon Homes policy of continually updating and improving design features. Therefore, please be sure to check the plan and specification in the sales office to keep you up-to-date with the latest improvements. The vendors of this property give notice that: (i) the particulars are produced in good faith, are set out as a general guide only and do not constitute any part of a contract; (ii) no person in the employment of Persimmon Homes or their authorised agents has any authority to make or give any representation or warranty whatever in relation to this property. Persimmon Homes is compliant with the New Homes Quality Code. Please ask your sales advisor if you have any further questions.