

enfields
FOR SALE
02380 828082
enfields.online

enfields

enfields hythe
100, The Parade
Hythe, Hampshire
PO25 6AN
023 8082 8082
sales-hythe@enfields.co.uk

enfields

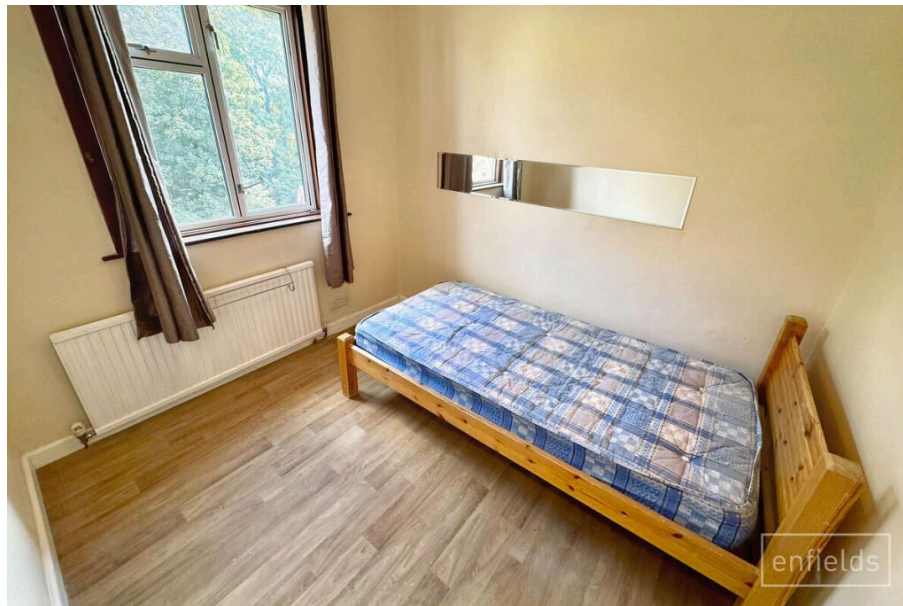
Romsey Road, Southampton, SO16 4BW

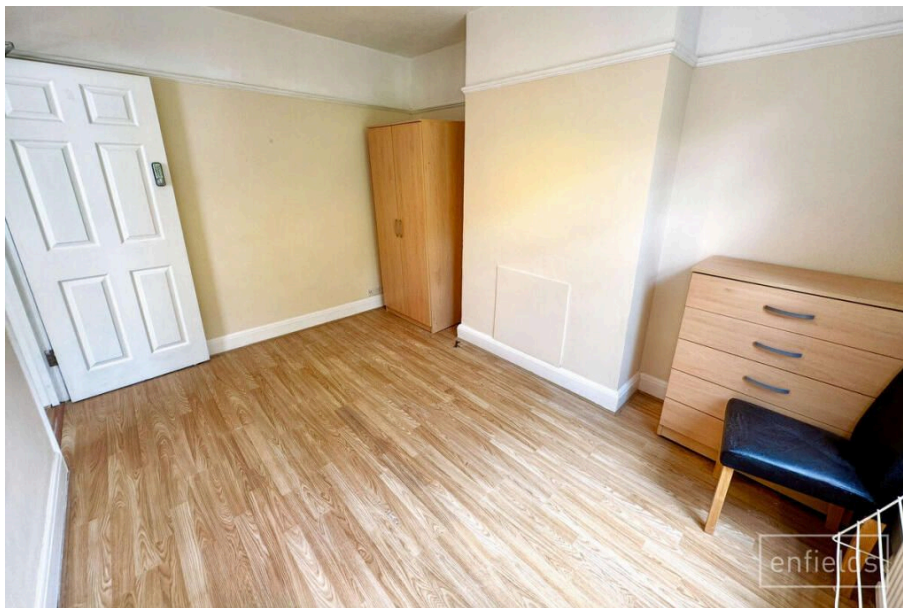
£240,000

🛏 3 🚿 1 🚗 2

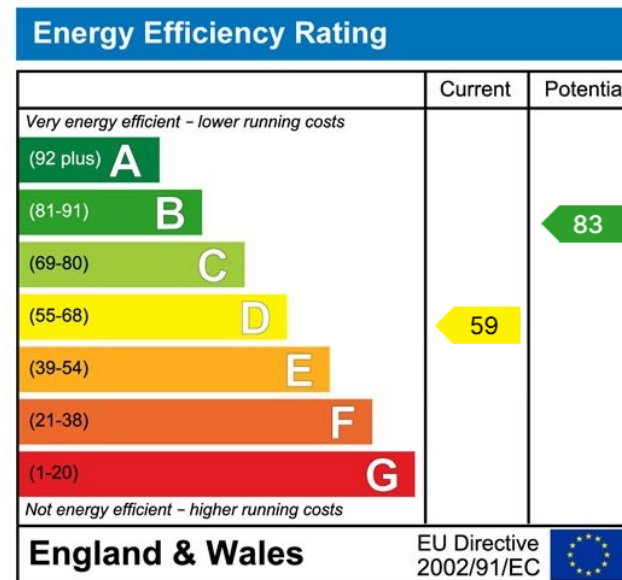


- 3 bed semi-detached house
- Off-road parking with driveway to front
- No forward chain for a smooth purchase
- Dedicated utility room and laundry space
- Ready to move into with neutral décor
- Modern three-piece shower room
- Generous room sizes and large windows throughout
- Spacious lounge and separate dining room
- Enclosed rear garden with patio and side access
- Close to schools, hospital, shops, and motorway links





A well-presented three-bedroom semi-detached home in Maybush, Southampton, offering spacious living, off-road parking, and a light-filled interior with potential for future extension. Conveniently located near schools, amenities, the hospital, and excellent transport links, it's ideal for families and professionals alike.



www.enfields-southampton.co.uk



It is Enfields policy to respect any sole agency currently in force and we would not be able to commence marketing until this has expired or been terminated. If you fail to terminate any previous agreement you could be liable for two sets of fees. Enfields Hythe is a trading name of YTF LTD Registered office: 345 Shirley Road, Southampton, Hampshire, England, SO15 3JD. Company Registration No: 10459987. VAT Registration No: 281 2975 81.

Enfields Lettings - Embley Management LTD T/A Enfields. Registered Address: 345 Shirley Road, Southampton, Hampshire, England, SO15 3JD. Company Registration No: 14847604. VAT Registration No: 439 8546 45.