



16 Longue Drive, Calverton - NG14 6QF

Guide Price £250,000

DavidJames
the estate agent



16 Longue Drive

Calverton, Nottingham

GUIDE PRICE £250,000–£260,000

Council Tax band: B

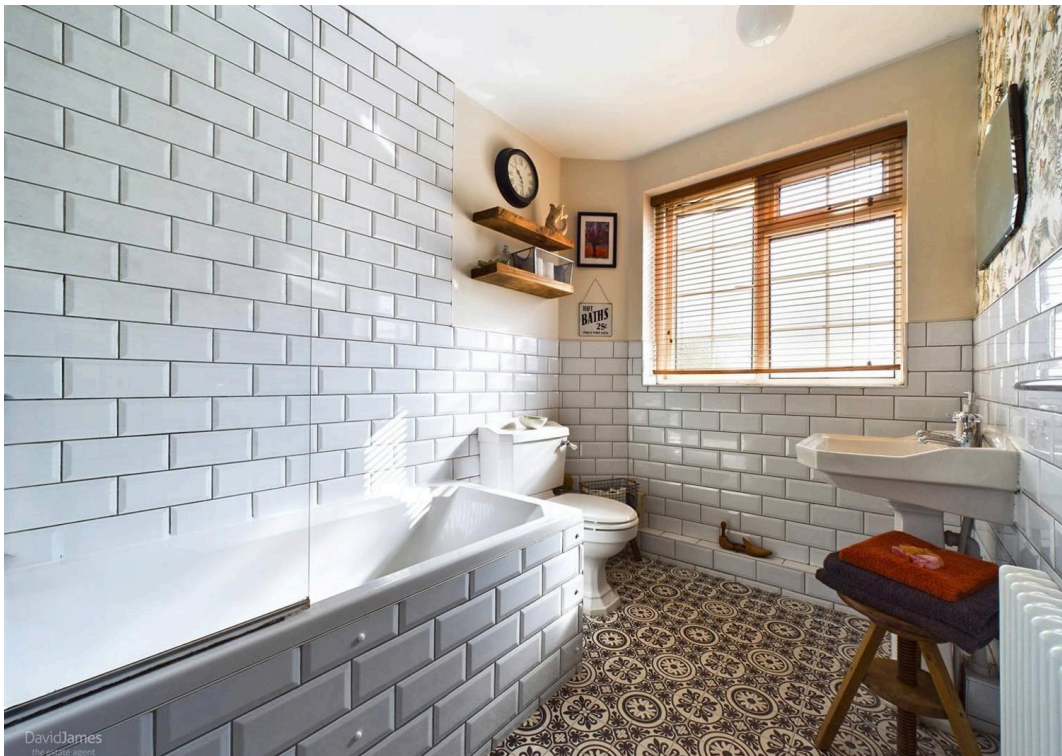
Tenure: Freehold

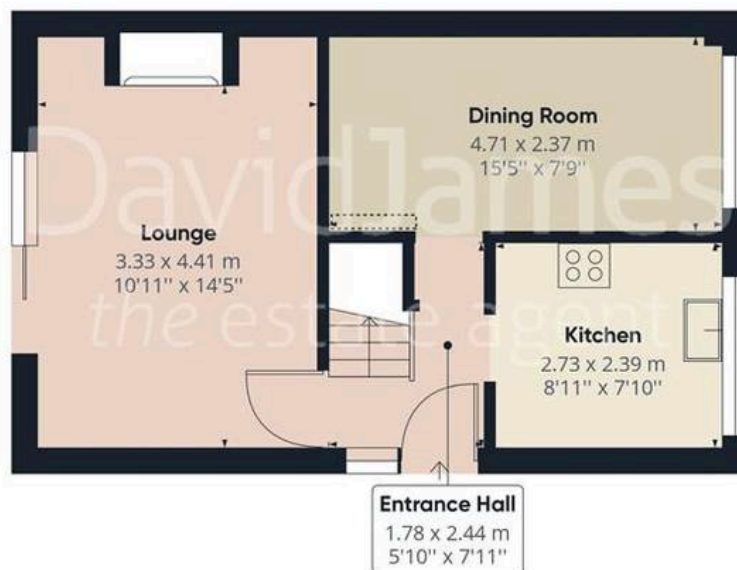
EPC Energy Efficiency Rating: C

EPC Environmental Impact Rating: D

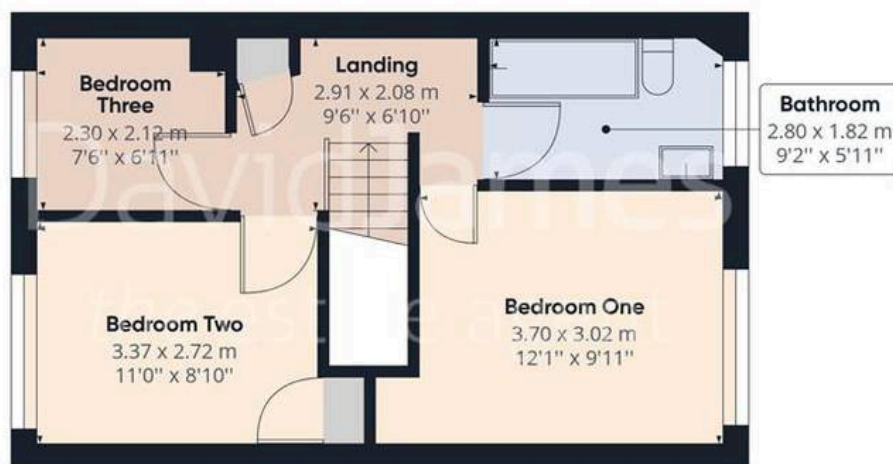
- Beautifully presented semi-detached house
- 3 bedrooms
- Welcoming entrance hall
- Bright and spacious lounge with feature log burner, separate versatile dining room
- Superb kitchen with timber-finish work surfaces and integrated appliances
- First floor bathroom with three piece white suite and over-bath shower
- Immaculately maintained lawned garden with feature patio area
- Driveway providing off-street parking for multiple vehicles
- Popular village location in Calverton and just a short walk from open countryside







Floor 0



Floor 1

Approximate total area⁽¹⁾

75.51 m²


812.75 ft²

Reduced headroom

0.19 m²

2.09 ft²

(1) Excluding balconies and terraces

 Reduced headroom
(below 1.5m/4.92ft)

While every attempt has been made to ensure accuracy, all measurements are approximate, not to scale. This floor plan is for illustrative purposes only.

GIRAFFE360



David James Estate Agents

98-100 Front Street, Arnold - NG5 7EJ

0115 955 5550 • arnold@david-james.com • www.david-james.com

These particulars are produced in good faith and are set out as a general guide only. Measurements are approximate and floor plans are for illustrative purposes only. Services have not been tested. We have established professional relationships with third-party suppliers for the provision of services to Clients, details of which can be found on the property listing page on our website.