

THE HOME AGENCY

'Passion for property.'



33 Clauden Close, Swaythling, Southampton, Hampshire, SO18

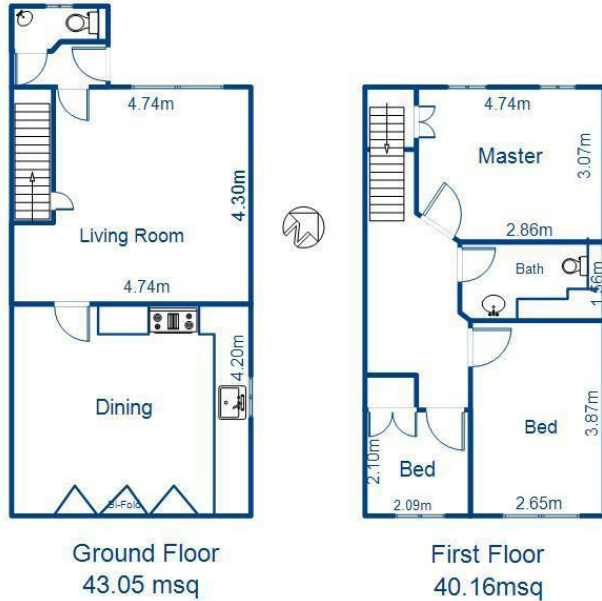
£1,550 PCM

- Three Bed Semi Detached Family Home
- Gas Central Heating
- Downstairs WC
- Pets Considered
- Stunning Kitchen/Diner
- Garden
- Two Double Bedrooms
- Double Glazing
- Double Driveway
- Modern Bathroom

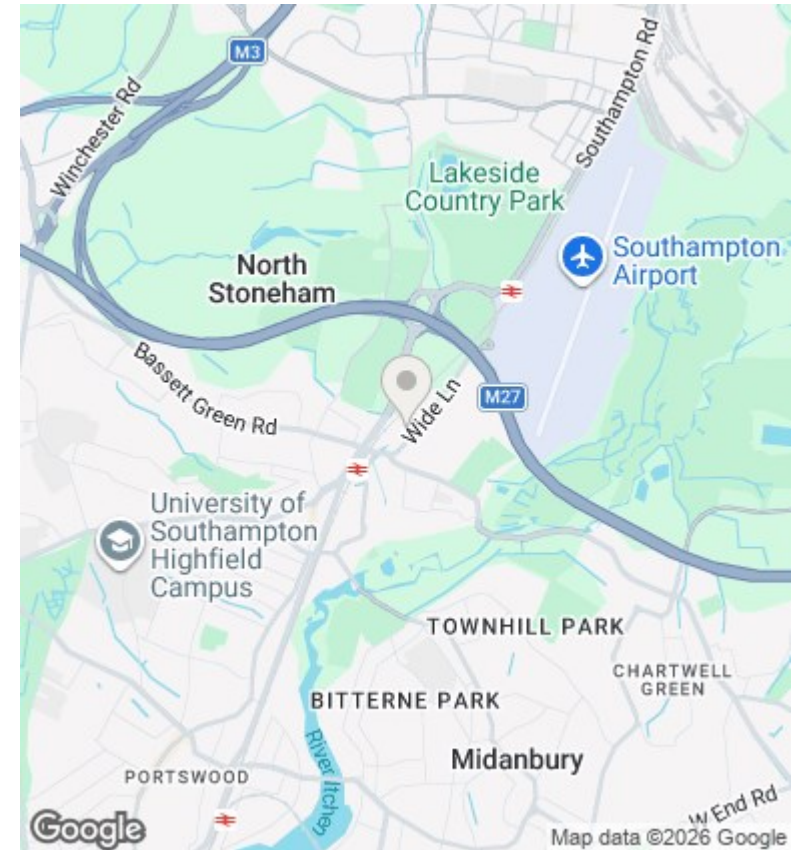
11 London Road, Southampton, Hampshire, SO15 2AE
02380 632632

enquiries@thehomeagency.net
<https://thehomeagency.net>

33 Clauden Close Swaythling SO18 2HQ



ALL MEASUREMENTS ARE APPROXIMATE



Directions

Viewings

Viewings by arrangement only. Call 02380 632632 to make an appointment.

Council Tax Band

B

EPC Rating:

C

Energy Efficiency Rating		
	Current	Potential
Very energy efficient - lower running costs		
(92 plus) A		90
(81-91) B		
(69-80) C	79	
(55-68) D		
(39-54) E		
(21-38) F		
(1-20) G		
Not energy efficient - higher running costs		
England & Wales	EU Directive 2002/91/EC	